

Global Spatial Data Infrastructure Latin America and the Caribbean Newsletter

SDI-LAC

July 2010

Vol. 7, No. 7

Spatial Data Infrastructure-Latin America and the Caribbean (SDI-LAC) is a regional, monthly, and free, electronic newsletter from the [Global Spatial Data Infrastructure Association](#) (GSDI). It focuses on aspects related with Spatial Data Infrastructure, and on GIS, remote sensing, and data management issues, related with SDI in Latin America and the Caribbean. It aims to raise awareness, provide useful information to strengthen national SDI initiatives, and support synchronization of regional efforts.



[GSDI Definition](#)

The [Pan-American Institute of Geography and History](#) (PAIGH), member organization of GSDI, and the [Permanent Committee on Geospatial Data Infrastructure for the Americas](#) (PC-IDEA), promote SDI development in the region. The newsletter is prepared by PAIGH for GSDI.

[Message from the Editor](#)

[Input to this Issue](#)

[SDI News, Links, Papers, Presentations](#)

[Articles and Publications of the Month](#)

[Geospatial Research and Applications](#)

[GIS Tools, Software, Data](#)

[Training Opportunities](#)

[Funding Opportunities, Awards, Support](#)

[Employment Opportunities](#)

[Other](#)

[Americas: Conferences, SDI Events](#)



Message from the Editor

Due to an increasing volume of information on events, the respective section will be restricted to those events taking place in the Americas. However, for "The Rest of the World: Conferences, SDI Events", please find a link to upcoming events of global or major international interest in GSDI webpage at: <http://www.gsdi.org/events/upcnf.asp>

We kindly inform that SDI-LAC Newsletter is taking correspondent members in each country of the LAC region. Next issues will include their contributions. If you would like to become a correspondent for your country please contact Nancy Aguirre cnaguirre@ipgh.org. In principle the only requirement is that you are an active member in the Spatial Data Infrastructure activities of your country.

If you have news or information related to GIS, remote sensing, and Spatial Data Infrastructure that you would like to highlight (e.g., projects, conferences, workshop announcements, publications, reports, websites of interest, etc.), kindly send them in. We would be happy to include them in the newsletter.

We also encourage you to send to the editor your comments and suggestions for the continuous improvement of SDI-LAC Newsletter. **PLEASE share this newsletter with colleagues who may find the information useful, and ideally they will subscribe themselves.**

Back issues of the newsletter are at the GSDI website: <http://www.gsdi.org/newsletters.asp>

Editor, Nancy Aguirre, Pan-American Institute of Geography and History (PAIGH), <http://www.ipgh.org>, cnaguirre@ipgh.org

SDI-LAC Newsletter



Vol. 7, No.7

Global Spatial Data Infrastructure Latin America and the Caribbean Newsletter

Input to this Issue

Thanks for their contributions to this SDI-LAC Newsletter issue to:

Santiago Borrero	Secretary General, Pan-American Institute of Geography and History, PAIGH, Mexico
Sarah Carr	Network Coordinator, Ecosystem-Based Management Tools Network, NatureServe, Arlington, USA
Ludo Engelen	SADL, K.U. Leuven (Spatial Applications Division Leuven), Leuven, Belgium
Kate Lance	SERVIR Coordinator, NASA/USRA, Huntsville, AL, USA
Miguel Ruano	Secretary of the National Council of Geoinformatics (in Spanish CONAGE) Ecuadorian Geospatial Data Infrastructure (in Spanish) IEDG), Ecuador
Elódio Sebem	Forest Engineer, PhD Universidad Politécnica de Madrid, Colegio Politécnico de la UFSM, Santa Maria, RS, Brazil
Carla Valdospinos	Administrative Coordination, UNIGIS in Latin America, Universidad San Francisco de Quito, Ecuador

[\(Back to Top\)](#)

SDI News, Links, Papers, Presentations

GSDI 12 World Conference Update



The GSDI 12 World Conference 2010 will take place in the garden city of Singapore, at the Suntec Singapore International Convention & Exhibition Centre from 19 to 22 October 2010. This conference is organized by partners - the GSDI Association, the Permanent Committee on GIS Infrastructure for Asia & the Pacific (PCGIAP) and the Singapore Land Authority (SLA).

There are three major components in this conference:

- 12th edition of the GSDI Conference;
- 16th annual meeting of the Permanent Committee on GIS Infrastructure for Asia & the Pacific (PCGIAP); and
- Trade Exhibition.

The theme for this conference is Realising Spatially Enabled Societies. This conference will explore the complementary roles of government, private industry and the academic community in realizing better means for sharing geographic data and technologies and developing improved location-based services for meeting real world needs. Check out the program, free workshops and affiliated meetings at <http://www.gsd.org>.

Singapore, a dynamic city rich in contrast and colour, invites you to come and engage yourself in an intellectual exchange with leaders and experts in the geospatial industry.

SPEAKERS:

Distinguished Keynote and Featured Speakers at GSDI 12 to-date include:

SDI-LAC Newsletter



Vol. 7, No.7

Global Spatial Data Infrastructure Latin America and the Caribbean Newsletter

- Ivan B. DeLoatch, Staff Director, Federal Geographic Data Committee;
- Abbas Rajabifard, President, GSDI Association;
- Ng Siau Yong, Director of Geospatial Division, Singapore Land Authority, Singapore SDI;
- Santiago Borrero, Secretary General, Pan-American Institute of Geography and History (PAIGH/IPGH);
- Stig Enemark, President, International Federation of Surveyors (FIG);
- Mark Reichardt, President and Chief Executive Officer, Open Geospatial Consortium, Inc. (OGC);
- Ian Williamson, Professor of Surveying and Land Information, Centre for Spatial Data Infrastructures and Land Administration, Department of Geoinformatics, University of Melbourne;
- Greg Scott, National Mapping & Information Group Leader, Geospatial & Earth Monitoring Division, Geoscience Australia

SOCIAL EVENTS:

Tuesday, 19th October

WELCOME RECEPTION: Let's Fly! The Welcome Reception at the GSDI12 World Conference will be a celebration of Singapore's cultural diversity by bringing together gastronomical delights from different local ethnic groups. It will be an excellent opportunity for you to meet other conference attendees in the spectacular surroundings of the Singapore Flyer - the largest observation wheel in the world. Delegates will have a free ride on the capsules and enjoy breathtaking views of the city coming alive at night. This networking event is a great opportunity to bring your discussions to greater heights and is not to be missed!

When: Tuesday 19 October, 6.30pm - 9.30pm

Where: The Singapore Flyer, Megu Event Hall

Thursday, 21st October

CONFERENCE DINNER: There is no better way to spend an evening in Singapore! Wine, dine and network at this dinner, held on the second to last day of the GSDI 12 conference. Revel in the charm of exotic Singapore at the Asian Civilisations Museum, and look forward to experience Singapore's history, culture, architecture and cuisine. The dinner will feature a sumptuous spread of Singapore's most well-loved local delights. This event also presents an opportunity for delegates to meet and socialise amidst the city lights overlooking the Singapore River! Come join in this unique, must-have experience during your stay in the city! More details on the dinner will be provided at a later date.

REGISTRATION for GSDI 12 is now OPEN at <http://gsdi.org/gsdi12/register.html>

Register online by **1st August**, 2010 to enjoy early bird rates!

For more information on the conference, please visit us at <http://www.gsdi.org/gsdi12> or follow us on Twitter at <http://twitter.com/GSDI12>.

[Second Preparatory Meeting of the Proposed United Nations Committee on Global Geographic Information Management](#)

Source: <http://unsdihu.blogspot.com/> ; <http://unstats.un.org/>



United Nations Statistics Division

UNSD, in collaboration with the UN Cartographic Section, organized the Second Preparatory Meeting of the Proposed United Nations Committee on Global Geographic Information Management, in New York, 10-11 May 2010. The

Global Spatial Data Infrastructure Latin America and the Caribbean Newsletter

purpose of the Meeting was to discuss and initiate the preparation of a [report](#), for the approval of ECOSOC, on global coordination of geographic information management, including the consideration of a possible creation of a United Nations global forum for the exchange of information among countries and other interested parties, and particularly for sharing best practices in legal and policy instruments, institutional management models, technical solutions and standards, interoperability of systems and data, and sharing mechanisms that guarantee that geographic information and services are easily and timely accessible. The Meeting brought together official representatives from member countries as well as representatives from relevant professional organizations. Participants discussed the terms of reference and the modalities of work for the global forum and the Committee of Experts. Documents for the meeting: [Provisional Agenda and Annotations](#) / [List of Documents](#)

Meeting of PC-IDEA Board

Source: <http://www.snit.cl/>

During the 12th and 13th of May at headquarters of the Statistics Division of the United Nations in New York, it was held the first meeting of the Board of the Permanent Committee of Geospatial Data Infrastructure of the Americas (PC-IDEA).

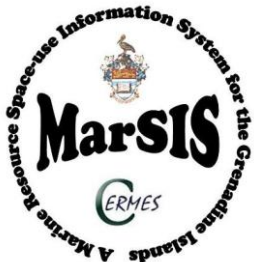
On this occasion, the Executive Secretary of the National Territorial Information System of Chile (in Spanish SNIT) and vocal member for South America, Christian Aqueveque, was elected Vice President of this international body. This appointment reflects the work done by the SNIT, which has been twice recognized by all the committee members. At this meeting, it was prepared a working plan for next four years and reviewed and discussed PC-IDEA statutes, concluding with a proposal to be sent to member countries for their analysis, as well as other matters of interest to the Board. This Committee, which brings together a total of 24 countries, has as main objectives the establishment and coordination of policies and technical standards for the development of regional geospatial data infrastructure in the Americas, and to promote geospatial information sharing among all the community members, acknowledging their autonomy in accordance with their laws and policies. The meeting was addressed by the President of PC-IDEA, Luiz Paulo Souto Fortes (Director of Geosciences of the Brazilian Institute of Geography and Statistics - IBGE) and included the participation of members of the Caribbean, Mr. Eloy Alum Ortiz (Head of the National Office of Hydrography and Geodesy of Cuba), and of Central America, Mr. Oscar Figueroa Cabrera (Director General of the National Geographic Institute of Guatemala). In addition, the meeting included participation of national representatives of Canada, Mr. Prashant Shukla (Director General of the Division of Cartographic Information) and Ms. France Morin (Senior Adviser, Ministry of Natural Resources); of Mexico, Mr. Carlos Guerrero (Director General of Geography and the Environment) and Raúl Gómez Moreno (Director of Technology Development) both of the National Institute of Statistics and Geography; of Chile, Mr. Nicholas Musalem, Chief of the Land Registry Division of the Ministry of National Property; Mr. Amor Laaribi (Statistics Division United Nations); and the Executive Secretary of the Pan American organization, Mrs. Valeria de Araujo, of IBGE Brazil.



Marine GIS in the Grenadines

Source: <http://caribbean-gis.blogspot.com/>

From June 7 to 11, 2010, primary and secondary school teachers from across the Grenadines [Grenada and St. Vincent & the Grenadines] received hands-on training in the use of a cutting-edge technology used to create the [Grenadines Marine Resource and Space-use Information System](#) (MarSIS), the first of its kind underwater mapping information system in the Caribbean. MarSIS is a project of the Centre for Resource Management and Environmental Studies (CERMES) - University of the West Indies, and the Sustainable Grenadines Project - Union Island. The Grenadines MarSIS is a GIS which has been created to integrate a range of existing scientific information together with



Global Spatial Data Infrastructure Latin America and the Caribbean Newsletter

a variety of local knowledge of the Grenadines marine resources (i.e. reefs, sea grass beds, mangroves) as well as areas important for conservation (i.e. turtle nesting beaches, fish nursery areas) and livelihoods (i.e. fishing, tourism, shipping, recreation) as well as hundred of underwater pictures and videos across the Grenadines. This information system has been collaboratively developed over the past 5 years with a range of community members within each Grenadine Island in order to provide easy access to marine environmental information and allow for more informed decision-making and ultimately promote sustainable marine resource management across the Grenadines. The first workshop took place in Carriacou at the Multi-Purpose Centre in Hillsborough on June 7; the second took place on June 8 in Union Island at the Sustainable Grenadines Project office; the third workshop at the Canouan Government School on June 9; the fourth workshop in Mustique on June 10; and the final workshop was held at the Bequia Community High School on June 11. More than 50 teachers were to attend this week-long series of workshops. Thanks to Kimberly Baldwin and Bruce Potter for the information; and kudos to Kimberly and all involved with MarSIS for staying the course for the five years it has taken to get to this stage. Contact: info@grenadinesmarsis.com

[Meetings began for the Map Law reform, Argentina](#)

Source: <http://www.ign.gob.ar/>



On May 18 and 20 began a series of meetings for establishing a review commission aimed at assessing the reform of the Map Law No. 22.963. To this end, authorities of the National Geographic Institute of Argentina (in Spanish IGN) convened experts in the field: the President of the Pan-American Institute of Geography and History (Prof. Hector Pena), the President of the National Academy of Geography (Prof. Antonio Cornejo), Deputy Director of Teacher Training Institute No. 1 (Miguel Angel Giannetti) and the Director of the Department of Geography, Faculty of Philosophy, University of Buenos Aires (Mr. Luis Dominguez), along with professors from the Department of Cartography (Mariana Campos and Miguel Starobinsky). The meeting began by discussing a draft law prepared on the basis of requirements of various institutions and agencies. General topics were discussed, without going into specific discussions, collecting comments and suggestions from the audience. Finally, it was agreed to set a new meeting to be held during the first half of June. The "Map Law" was enacted on October 3, 1941, so the current IGN administration considers relevant to assess the modification of certain points of regulation. One potential reform would provide the legal tools to confront the new 21st century's political, economic and technological scene, which pose new challenges but also new opportunities. It will be a definite step in the consolidation of a federal partnership scheme which is part of the spirit of the new Directorate of IGN, as well as for strengthening of a set of actions that enable all people to learn about the scope and status of the Republic of Argentina's territory.

[Cooperation Agreement Signed with the Province of Santa Fe, Argentina](#)

Source: <http://www.ign.gob.ar/>

The Director of the National Geographic Institute (IGN), Lic. Liliana Weisert, and the Assistant Director, Julio Cesar Benedetti, along with advisers, Ms. Lidia Rodriguez and Mr. Mario Kohen, formed a Committee to participate in the signing of the Cooperation Agreement Framework with the Government of the Province of Santa Fe, which was held on May 27 in that location. The said agreement established an institutional assistance and cooperation relationship aimed at optimizing resources of both the Institute and the Province of Santa Fe, considering that in both organizations are included corresponding fields. The parties agreed to the provision of technical, human and infrastructural resources for the conduction of studies, programs, research, technical or operational activities of the sort



Global Spatial Data Infrastructure Latin America and the Caribbean Newsletter

required in opportunity. Both bodies will share accurate data on existing roads, sites, farms, buildings and boundaries in rural areas. First objectives are to update the mapping of northern Santa Fe and the installation of a permanent GPS station (Global Positioning System) in San Cristobal, which will help updating the geodetic network at the provincial level to provide better data reception for the system's users in the area. As part of this agreement, it was signed the Supplementary Agreement No. 1, by means of which both organizations will start working together. In this first stage, 13 topographic maps of northern Santa Fe will be drawn from basic technical specifications of the IGN and graphical information and place names of the Santa Fe Province Cadastral and Territorial Information Survey (SCIT). The agreement with Santa Fe is the first of its kind signed by the National Geographic Institute and a province of Argentina and is a step forward to the integration policy being developed by the new IGN Directorate. It was also an opportunity for the Commission to hold a meeting with authorities in charge of the Spatial Data Infrastructure of Santa Fe, Federal Investment Council, which aimed at agreeing on issues pertaining to the institutionalization of the National SDI. These topics are planned for discussion at the V IDERA meeting, which will be a venue for sharing and discussing initiatives, projects and ideas for the development and institutionalization of the National Argentinean SDI.

[Workshop on "Building the Ecuadorian Geospatial Data Infrastructure"](#)

Source: <http://territorial.sni.gov.ec/> by Miguel Ruano



On May 28, 2010 the workshop on "Building the Ecuadorian Geospatial Data Infrastructure" was held, under the coordination of the National Secretariat of Planning and Development, through the Assistant Secretary for Information and Research and the National Council of Geoinformatics (in Spanish CONAGE). In the presence of representatives from more than 20 state agencies, the coordinators of the six Working Groups of the Council (i.e. National Information Demand; Geographic Information Standards; National Geo-Information Policy; Fundamental Data, Objects Catalog and Place Names; Ecuadorian Metadata Profile; and Outreach and Dissemination), presented their activities, current processes and products obtained so far, information which is available in the [Workshop Proceedings](#). The event was part of the National Geoinformatics Council's aim to shape the [Ecuadorian Geospatial Data Infrastructure \(in Spanish IEDG\)](#). It was intended for persons who make up the six CONAGE groups, for sharing their working experiences and learning about activities being undertaken, in order to improve relationships between them. The IEDG, according to CONAGE, is a set of policies, laws, agreements, standards, organizations, plans, programs, projects, human resources, technological and financial resources, that are well integrated to facilitate the production, access and use of national, regional, or local geoinformation to support the social, economic and environmental development of the peoples. IEDG's core objectives are to ensure orderly production, ease of access and use of geospatial information; and to implement data management tools (metadata) and shared databases (sector's nodes). At the time, several institutions including the Military Geographic Institute (in Spanish IGM), the Center for Integrated Natural Resources through Remote Sensing (in Spanish CLIRSEN); GeoRiesgo; the National Research Institute for Geology, Mining and Metallurgy (in Spanish INIGEMM), the National Institute of Statistics and Censuses (in Spanish INEC) and the National Institute of Meteorology and Hydrology (in Spanish INAMHI), have already taken their first steps in establishing a Spatial Data Infrastructure (SDI) through the development of geoportals where geographic information may be visualized through WMS, WFS, or WCS, and users may access each geographic products' metadata.

[Consolidation of Geographic Information Policy, Colombia](#)

Source: <http://www.icde.org.co/>

The CONPES 3585 document: "Consolidation of National Geographic Information Policy and the Colombian Spatial Data Infrastructure (ICDE)", defined as problem axis No.1 the "Weaknesses in the regulatory framework for managing geographic information." The Geographic Institute "Agustin Codazzi" (in Spanish IGAC) in response to this problem offers the community the [document](#) of policy proposals on issues of intellectual property, use, custody and standards of geographic information license pricing. The goal is to receive suggestions, appreciations and other comments that

Global Spatial Data Infrastructure Latin America and the Caribbean Newsletter

could contribute to the final drafting of this document. Participation of the entire geographic information user community is fundamental for the consolidation, validation, approval and adoption of regulatory documents. For this reason, IGAC invites participation on the above, both formally, using the format made available or through the forum: [Strengthening the Geographic Information Policy](#). Contributions may be also sent by email at ide@igac.gov.co

[New Geoviewer of Santiago de Cali's Spatial Data Infrastructure \(IDESC\), Colombia](#)

Source: <http://www.icde.org.co/>



Current tendency to use geographic information as an effective management tool in public administration has allowed the Spatial Data Infrastructure to guide efforts for geographic information production, access and use for decision making as a result of pooling of entities that produce and use geographic information. Consequently, regional initiatives have emerged such as the Santiago de Cali's Spatial Data Infrastructure (in Spanish IDESC), which aims to "define policies, norms and standards for regulation and standardization of the municipality's geospatial information production, geo-referencing, quality, maintenance, documentation and distribution." As part of the IDESC development process last May 13, 2010 the IDESC Geoviewer (in Spanish Geovisor IDESC) was launched to the user community, which provides the municipality's geographic information to the user community allowing access to available data according to user's requirements. For more information please to log on to: <http://idesc.cali.gov.co/geovisor.php>

GEOProcessing 2011: Call for Papers, Tutorials, Panels - Guadeloupe

Source: Kate Lance



The Third International Conference on Advanced Geographic Information Systems, Applications, and Services

GEOProcessing 2011
February 23-28, 2011 - Gosier, Guadeloupe, France

GEOProcessing 2011: The Third International Conference on Advanced Geographic Information Systems, Applications, and Services, February 23-28, 2011 - Gosier, Guadeloupe, France

General page: <http://www.iaia.org/conferences2011/GEOProcessing11.html>

Call for Papers: <http://www.iaia.org/conferences2011/CfPGEOProcessing11.html>

Submission deadline: **October 5**, 2010. Sponsored by IARIA, www.iaia.org

Extended versions of selected papers will be published in *IARIA Journals*: <http://www.iaiajournals.org>. Please note the Poster Forum and Work in Progress options. The topics suggested by the conference can be discussed in term of concepts, state of the art, research, standards, implementations, running experiments, applications, and industrial case studies. Authors are invited to submit complete unpublished papers, which are not under review in any other conference or journal in the following, but not limited to, topic areas: Geo-spatial fundamentals, GIS, Geo-spatial

Global Spatial Data Infrastructure Latin America and the Caribbean Newsletter

simulation and visualization, Geo-modeling, Digital cartography data, Earth Geo-observation, Geo-sensing, Geo-spatial domain applications, and Managing geo-spatial data. All tracks are open to both research and industry contributions, in terms of Regular papers, Posters, Work in progress, Technical/marketing/business presentations, Demos, Tutorials, and Panels. Before submission, please check and conform with the Editorial rules: <http://www.iaria.org/editorialrules.html>

URISA's Caribbean GIS Conference, Trinidad

Source: <http://www.urisa.org/>



The Association For **GIS** *Professionals*

Corporation - an association of electric utilities, suppliers, manufacturers and other stakeholders operating in the electricity industry in the Caribbean, will be a partner in the 2010 conference. The Call for Presentations will be issued shortly. Objectives of URISA's Caribbean GIS Conference:

- To inform broad cross-section of Caribbean users about GIS technology and applications
- To share experiences regarding GIS implementation and management issues
- To establish new relationships with the vendor/consultant community
- To provide application driven workshops and sessions that may be relevant to the Caribbean community of GIS users
- To foster a Caribbean GIS network
- To assess the state of readiness of national and regional Spatial Data Infrastructures

The Conference Program is developed through a Call for Presentations. Abstract submissions are reviewed and discussed by a group of volunteer committee members representing the Caribbean region and others with a keen interest in advancing technology solutions in the area. The conference includes a comprehensive exposition and networking activities.

3rd Geoinformatics Week: "The Geoenvironment where we live in: State of the Art and Perspectives", Brazil

Source: Elódio Sebem



3ª Semana da Geomática



The Federal University of Santa Maria (in Portuguese UFSM) of Brazil, through Courses on the Geoprocessing area (Grade and Technical) of the Polytechnic College of UFSM, and with support of the Graduate Program in Geoinformatics of the Department of Rural Engineering - Center of Rural Sciences, will hold the 3rd Geoinformatics Week on September 13-16, 2010, aimed at gathering Universities, Schools, Teachers, Public and Private Companies,

SDI-LAC Newsletter

8

Vol. 7, No.7



Global Spatial Data Infrastructure Latin America and the Caribbean Newsletter

Professionals and Students in the area of Geoinformatics and the like in this event. We are living "transformation times" and thus we invite the technical-scientific, academic and business community to participate in the 3rd Geoinformatics Week and to share current studies that provide insight into the Geoenvironment in which we live. Those interested in submitting technical and scientific works to this event may do so until **July 26**, 2010 (regulations on the website of the event.) Selected papers will be presented orally or through posters according to the rules published on the website: www.ufsm.br/geoprocessamento/3smgeo (papers written in Spanish are also accepted).

Call for the Latin American ESRI Users Conference 2010, Mexico

Source: lauc2010 through Santiago Borrero



Join the largest event of Geographic Information Systems to be held on September 22-24, 2010 in Mexico City where you can meet and interact with specialists, technicians, teachers and users throughout Latin America to share experiences, and gaining knowledge on latest technologies associated with Geographic Information Systems. Paper submission: **August 30**, 2010 www.sigsa.info/lauc2010/ponencias. The Latin American Conference on GIS in Education <http://www.sigsa.info/lauc2010/edu.html> will be held on September 21, 2010 on the sideline of the 17th Latin American ESRI User Conference 2010. Organizers: Geographic Information Systems, S.A. de C.V., Environmental Systems Research Institute, www.sigsa.info/lauc2010

International Workshop on ENSO, Decadal Variability and Climate Change in South America: Call for Papers, Ecuador

Source: Organizing Committee by way of Santiago Borrero



Hereby, we are very pleased to disseminate the Second Announcement and Call for papers for the International Workshop on ENSO, Decadal Variability and Climate Change in South America "Trends, Teleconnections and Potential Impacts" which will be held in Guayaquil, Ecuador on October 12-14, 2010. For detailed information and registration/abstracts submission you may go to: http://www.clivar.org/meetings/enso_2010.php. The deadline for abstract submissions is **July 31**, 2010. Main objectives of the International workshop are:

- To review the latest scientific advances on ENSO, decadal variability and Climate Change in South America.
- To review the projected trends and changes in ENSO teleconnections in South America.
- To discuss on the potential climate impacts for the next 10-15 years and their social and economical implications in South America

We hope this be a great opportunity to bring together, the scientific progress around the world on these relevant topics, and to foster climate research efforts in South America to contribute with climate risk management, adaptation plans and climate services improvement.

Global Spatial Data Infrastructure Latin America and the Caribbean Newsletter

First Announcement: Fourth International UN-SPIDER Bonn Workshop on Disaster Management and Space Technology: "The 4C – Challenge: Communication – Coordination – Cooperation – Capacity Development"

Source: Santiago Borrero



Organised by the United Nations Office for Outer Space Affairs (UNOOSA) and the German Aerospace Center (DLR), the workshop will take place in Bonn, Germany, on October 12-14, 2010. Main topics of the fourth workshop will include: Space technology in support of risk and disaster management; International support mechanisms and SpaceAid; and the UN-SPIDER network. As a general framework, the workshop will contribute to the coordination of the various initiatives that are contributing to helping developing countries access and use space-based technologies for disaster management and risk reduction as well as to explore possibilities of capacity development and institutional strengthening. Participants should hold managerial or professional positions at governmental agencies, international, national and regional institutions, NGOs or private industry with programmes or activities relating to providing support to disaster management and emergency response activities, early warning systems, risk and vulnerability assessment, or development of space technology capabilities and/or solutions. Applicants who demonstrate that the topics of this event are central to his/her professional activities/responsibilities will be considered on a priority basis. The working language will be English. Within the limited financial resources available, a number of selected international participants from developing countries will be offered financial support to attend the Workshop. This financial support will defray the cost of travel (a round trip ticket – most economic fare – between the airport of international departure in their home country and Bonn, Germany) and/or the room and board expenses during the duration of the event. Applications for this workshop can be submitted through the online application tool at the UN-SPIDER Knowledge Portal (<http://www.un-spider.org/workshop-bonn-2010>). The completed online application form, properly endorsed by the applicant's government/institution, should be submitted no later than Friday, **13 August**, 2010. Only complete applications, with all the requested information and signatures, will be considered. For information regarding the agenda and general arrangements, including information regarding the venue of the meeting, hotel accommodation, transportation and other logistical details, please contact Ms. Natalie Epler, UN-SPIDER Bonn Office natalie.epler@unoosa.org. For further information please also check the following website: <http://www.un-spider.org/workshop-bonn-2010>

14th AGILE Conference on Geographic Information Science, Belgium

Source: Ludo Engelen by way of Santiago Borrero



On behalf of the AGILE council, we would like to invite you to participate at the 14th AGILE International Conference on Geographic Information Science, scheduled to take place on April 18-21, 2011 in Utrecht, The Netherlands. The program will offer parallel paper presentation sessions, keynote sessions, poster sessions and pre conference workshops to share your ideas, explore on going research, future developments, including state of the art applications, and to network with the professionals from academia, industry, and government who are interested in promoting GI teaching and research activities among GI laboratories at the European level. Potential contributors are invited to

Global Spatial Data Infrastructure Latin America and the Caribbean Newsletter

submit: Full paper submission (maximum 6000 word manuscript) of original and unpublished fundamental scientific research; Short paper submission (2000 to 3000 word manuscript) of original and unpublished research work; and Poster submission (500 to 1000 word manuscript) of original scientific and strategic research work. Authors' instructions will be made available after July 1st at www.uu.nl/geo/agile2011. All submissions must be sent electronically via the on-line conference manager. Contributions are invited on all topics within the fields of geoinformation, geomatics and geocomputation, including (but not limited to): Perception and Representation of Geographic Phenomena; Cognitive Aspects of Human Computer Interaction for Geographic Information Systems; Spatial and Spatiotemporal Data Modelling and Reasoning, Analysis, and Visualisation; Uncertainty and error propagation; Data Mining and Knowledge Discovery; Spatial Semantics and Spatiotemporal Ontologies; Semantic Web and GIS; Web Services, Geospatial Systems and Real time Applications; Location Based Services and Mobile GI Applications; Geospatial Decision Support Systems and Planning Support Systems (PSS); Public Participation GIS and Collaborative planning support; Geodesign; Volunteered Geographic Information; GIScience Education and Training; Demographic and Socioeconomic Modelling; Environmental/Ecological and Urban/Regional Modelling; Health and Medical Informatics; Natural Resources Management and Monitoring; Disaster and Risk Management; Geosensor Networks; Earth Observation Systems; Algorithms and Applications; and Image Interpretation and Image Analysis. Important Deadlines: Full paper submission: **October 18**, 2010; Pre conference workshop proposal: November 15, 2010; Short paper and poster submissions: **January 14**, 2011; Early registration: March 14, 2011; For any information with respect to the conference, please contact Fred Toppen (f.toppen@geo.uu.nl).

[\(Back to Top\)](#)

Articles and Publications of the Month

[Book of 130 years of IGN awarded](#)

Source: <http://www.ign.gob.ar/>

The book *IGM 130 IGN - 1879-2009*, published by the National Geographic Institute or Argentina (in Spanish IGN), was honored by the Argentinean Chamber of Publications and the Executive Unit on the Bicentennial Presidency of the Nation with a Special Mention Prize on June 15. Under the 22nd Contest "Best printed and published books in Argentina - Year 2009" and the "Bicentennial printed and published books in Argentina until April 30, 2010", a panel of representative institutions in publishing and cultural issues awarded the IGN book in the category "General Essay: biography, history, social sciences, journalistic essays." The event was held at the National Library, and was attended by officials and members of the Argentinean Chamber of Publications, officials of the National and Provincial Public Administration, publishers, and printing and publishing industry persons. After the award ceremony, a toast was made between the numerous attendees. The book *IGM 130 IGN - 1879-2009* is a retrospective of the most important milestones in 130 years of the Institute, but also looks to the future and imagine paths to follow during next stages.



Reflections about a global forum for GI management

Paper presented to the Second Preparatory Meeting of the Proposed United Nations Committee on Global Geographic Information Management, 10 - 11 May 2010, New York, By Mauro Salvemini, President of EUROGI, Sapienza University of Rome, Italy

Rationale of the position paper by the author

Along with and in support of the INSPIRE Directive and ever since the early decision of taking this initiative to set up an EU infrastructure for spatial data, the European Commission (EC) has established a number of activities. Research projects, thematic networks and pilot industrial projects have been financed in order to set up scientific, technical,

Global Spatial Data Infrastructure Latin America and the Caribbean Newsletter

operational solutions and practices together with exploring and setting up adequate and sustainable models for maximizing and exploiting the use of GI within the EU. Projects receive financial support through the European Union Framework Programs for Research, which bundle all research-related EU initiatives together under a common roof playing a crucial role in reaching the goals of growth, competitiveness and employment, and specific programs such as e-Contentplus¹ which provides measures to make digital content in EUROPE more accessible, usable and exploitable. These projects are defining specifications, common data models, guidelines, best practices as well as services to access and download relevant data models in a number of vertical domains corresponding to several themes of the Annex I to III of the Directive, ranging from geology to natural areas from planning to addresses, from places names to marine and coastal areas, etc. In order to contribute to concretize the resolution, already taken during the Eighteenth United Nations Regional Cartographic Conference for Asia and the Pacific in Bangkok, 26-29 October 2009, “.... *omissis* of the possible creation of a United Nations global forum for the exchange of information between countries and other interested parties, and in particular for sharing best practices in legal and policy instruments, institutional management models,... *omissis* “, the position paper presents some of the relevant issues to be addressed. The brief discussion is based on the project’s results and methodology of a thematic network project which aimed to the promotion of cross border dialogue and exchange of best practices on SDIs throughout Europe, bringing together key stakeholders of European SDIs and to realizing a platform for communication and exchange of knowledge at all levels, from local to global. Before entering in the discussion some information is needed. Already in the early stage of INSPIRE initiative to become a directive it has been clear to some of the experts that the main task of geo- data interoperability, which represents the basis GI management, could be impossible to achieve without the full involvement and appropriate participation of the sub-national administrations which form every European nation. They have their own administrative structure and are politically independent generally having their own elected Councils and President. The way how they are elected varies from nation to nation nevertheless according to the devolution process, globally recognized as a trend, their commitments steadily increase. The previous situation together with some other, technical considerations already experimented in some countries were driving the few experts , among which I was , to set up a project proposal which has been approved in a specific call of e-Contentplus program of the EC. The project is called eSDINet+ The paper intends to present some ideas built on the methods and the actions put in place for carrying out the project with specific reference to the involvement of sub-national SDI coming from different nations having different languages and administrative structures and different political framework as well. The results of the project may be usefully used for foreseeing and tailoring the actions to build the forum and the network mentioned within the already mentioned resolution. The peculiarities of each of the nations in Europe together with their own characteristics realize an effective test-bed for helping to take decisions at global level of the UN [The complete paper may be found at http://unstats.un.org/unsd/geoinfo/meetings/10-11_may2010/papers/SALVEMINI_UN052010.pdf]

¹ http://ec.europa.eu/information_society/activities/econtentplus/index_en.htm

Critical issues in global geographic information management with a detailed focused on Data Integration and Interoperability of Systems and Data

Paper presented to the Second Preparatory Meeting of the Proposed United Nations Committee on Global Geographic Information Management, 10 - 11 May 2010, New York, by Abbas Rajabifard, President, GSDI Association, Director, Centre for SDIs and Land Administration, Department of Geomatics, The University of Melbourne

Introduction by the author

The GSDI Association continues its support for the United Nations for taking the initiative on this critical global geographic information issue; and is willing to contribute to new arrangements to improve global geographic information management. The role of the GSDI Association, in essence, is to facilitate better global outcomes through utilization of geographic information and Spatial Data Infrastructures (SDIs). This role directly complements the proposal to establish a United Nations Committee on Global Geographic Information Management (UNCGGIM). The GSDI Association's view of the changes now taking place in the geographic information world and these changes exemplify convergence of technologies and disciplines. These changes need to be influenced where appropriate, and leveraged, by the global geographic information community, particularly by the United Nations. This paper presents some views related to the “critical issues in global geographic information management” and in particular a response to the following issues: (1) Governance: is global governance relevant and necessary? (2) Interoperability of systems and

Global Spatial Data Infrastructure Latin America and the Caribbean Newsletter

data (3) Data integration and layering, and (4) Capacity building and technology transfer. In responding to these issues, the paper however provides a more detailed discussions on “interoperability of systems and data” and “data integration” in particular the technical and non-technical issues and heterogeneity associated with multi-sourced spatial data integration in the context of SDI. [The complete paper may be found at http://unstats.un.org/unsd/geoinfo/meetings/10-11_may2010/papers/GSDI%20scoping%20paper-Abbad%20Rajabifard%202nd%20UNCGGIM%20meeting.pdf]

Data Integration

Paper presented to the Second Preparatory Meeting of the Proposed United Nations Committee on Global Geographic Information Management, 10 - 11 May 2010, New York, by Luiz Paulo Fortes, Director of Geoscience, IBGE, Brazil

Introduction by the author

The quick development of contemporary geospatial technologies such as satellite imagery, aerial photography, Global Navigation Satellite Systems (GNSS) e.g. the Global Positioning System (GPS), hand-held computers, and geographic information systems (GIS) has opened unprecedented opportunities to use geographic information. These tools are increasingly used in the context of disaster management, environmental monitoring, natural resources protection, land use, utility services, etc., as they facilitate quick data collection and advanced data analysis, and allow for a flexible and integrated approach to information sharing and dissemination based on a spatial framework. The impact of these developments is also felt on official statistics at all the stages of population and housing censuses, where the efficiency in the pre-enumeration, enumeration and post-enumeration phases has been largely improved through the use of geographic information tools. As a consequence, it is becoming increasingly clear that the applications of these technologies are of strategic importance. This raises the challenge related to how to address the integration of various geospatial information including those of statistical nature. This paper outlines the challenges posed by the integration of geographic data with socioeconomic and other development data. It covers the specific issue of the integration of statistical and geographic data and shows that statistical systems gain to be integrated with geographic information systems for the building of a geospatial infrastructure in support of census and other statistical activities. The paper illustrates this through the national experience of Brazil. [The complete paper may be found at http://unstats.un.org/unsd/geoinfo/meetings/10-11_may2010/papers/GGIM%20May%202010%20Data%20integration%20Brazil.pdf]

SDI Best Practice Database

Source: The eSDI-NET+ Newsletter 06/2010

Over the last 2 years the eSDI-Net+ project collected numerous data related to the 135 SDI applications from 24 European countries. The defined criteria, indicators and weighted indexes were used to assess the subnational SDIs. At the same time this information is a valuable property/good in itself. Therefore, the public version of the eSDI-NET+ database containing information about good practices in the SDI field in Europe is currently in preparation and will be available soon at the [eSDI-NET+ Project Website](#). The eSDI-NET+ project is funded by the European Commission within its eContentplus Programme and aims at promoting the cross-border dialogue and exchange of best practices on SDIs throughout Europe.



[\(Back to Top\)](#)

Global Spatial Data Infrastructure Latin America and the Caribbean Newsletter

Geospatial Research and Applications

[UN-SPIDER supporting Small Island Developing States](#)

Source: UN SPIDER May 2010 Newsletter and Updates



Vulnerability of Small Island Developing States (SIDS) calls for special support. SIDS are characterized by particular development challenges which are strongly related to their vulnerability to natural disasters. Tropical cyclones and hurricanes pose a major threat to these states, as well as tsunamis resulting from seaquakes. Some of them are threatened by rising sea levels. Periodic droughts are also a recurring phenomenon. In addition, some of these states are threatened by potential volcanic eruptions. Due to these circumstances, UN-SPIDER has been conducting Technical Advisory Missions to these countries in order to analyze and subsequently help strengthen their capacities to access and use space-based information for disaster management. Some of the recurring findings of these missions are the following:

- The need to consolidate and implement a National Spatial Data Infrastructure (NSDI) and to ensure the sharing and use of geospatial information within Ministries and other stakeholders of the national disaster management systems. Having an NSDI in place is a basic requirement for the effective use of geospatial information
- The necessity to ensure there are policies in place that empower national disaster management authorities to get access to geospatial information
- A need to consider the decentralization of disaster management activities through the promotion of community based disaster risk reduction activities
- Land use planning is central to disaster risk reduction and development. Current studies and datasets should be used to support vulnerability analysis and risk reduction activities
- Capacity-building is vital to ensure successful use of space-based information in support of disaster management and should include the strengthening of individuals, institutions and infrastructure. Furthermore, the need for institutional arrangements to ensure continuous capacity-building was ascertained.

More information on the cases of Jamaica, Haiti and Dominican Republic may be found at: <http://www.un-spider.org/sites/default/files/UN-SPIDER%20Newsletter%20May%202010.pdf>

[UN-SPIDER Supporting the Establishment of a Crop-Monitoring Project in Guatemala](#)

Source: <http://www.un-spider.org/>

From 13 to 19 May UN-SPIDER organized and participated in meetings to discuss and elaborate a proposal for a potential project in Guatemala targeting the use of space-based information to assess the impact of drought and climate variability on crops. This project proposal has been submitted to the Guatemalan National Council of Science and Technology (CONCYT) for funding, and targets the establishment of an inter-institutional, multi-thematic, technical committee of professionals which will focus its attention on the use of space-based information to track impacts caused by drought and climate variability events on crops in the “Dry Corridor” of the country. The project is based on a request made by Dr. Karen Slowing, Director of the Planning and Programming Secretariat of the Presidency (SEGEPLAN). The objective of UN-SPIDER behind this project is to promote the establishment of the inter-institutional committee in Guatemala as a strategy to strengthen national capacities regarding access to and use of space-based information. During the mission, experts from Guatemala identified the technical need for such a project, highlighting critical issues that need to be resolved through applied research when it comes to using space-based information in Guatemala for crop monitoring: extensive cloud cover, extremely variable topography, and a variety of microclimates. The project will benefit from the technical advisory support to be provided by the National Commission of Space

Global Spatial Data Infrastructure Latin America and the Caribbean Newsletter

Activities of Argentina (CONAE); and involves SEGEPLAN, the National Institute of Seismology, Vulcanology, Meteorology and Hydrology (INSIVUMEH), the Ministry of Agriculture (MAGA), the National Geographic Institute (IGN), the National Secretariat for Food Security (SESAN), the Ministry of Environment and Natural Resources (MARN), the National Coordinating Agency for Disaster Reduction (CONRED), the San Carlos University unit for the Nor-Orient region (CUNORI) of Guatemala, and researchers from the private sector. Regional and international organizations involved include UNDP, the Central American Coordination Center for Natural Disaster Prevention (CEPREDENAC), and the Trifinio Tri-National Secretariat. Links between UN-SPIDER, CONCYT, and SEGEPLAN were established nearly a year ago through initiatives conducted by CONCYT to promote the application of science and technology to promote sustainable development in the country, including the topic of disaster reduction. This visit and the related project will pave the way for the Technical Advisory Mission to be conducted by UN-SPIDER to Guatemala, planned for November of this year.

Data Needs Assessment for Integrated Landscape Management (ILM) Decision-Making Processes

Source: GeoConnections Users List



GeoConnections is pleased to announce the availability of the recently completed Data Needs Assessment for Integrated Land Management (ILM) Decision-Making Processes. Developed in close consultation with four active ILM projects located across Canada, the data needs assessment:

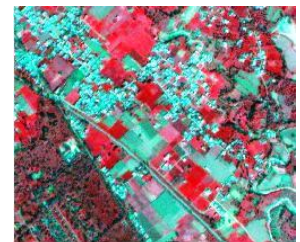
- Analyzes the role of geospatial data and information in ILM decision-making processes
- Identifies geospatial datasets used to support ILM decision-making processes and describes its transformation into meaningful information
- Identifies and prioritizes new geospatial data sets as needed to support and enhance ILM decision-making processes
- Identifies barriers to accessing, using and sharing key geospatial data sets
- Identifies opportunities for overcoming identified barriers

To view, please link to the [Key Documents](#) section of the GeoConnections web site. To obtain further information, please contact info@geoconnections.com

[Mapping Urban Fringes](#)

Source: <http://www.gim-international.com/>

What is the potential of Object-Based Image Analysis (OBIA) for creating land-cover maps from high-resolution satellite images of urban fringes, and can the accuracy of OBIA be compared to visual interpretation? The authors demonstrate that classification of objects rather than individual pixels provides a fast, efficient and simple semi-automatic method for generating land-cover maps. Overall accuracy is equivalent to visual interpretation (Dr. Seema Jalan, University of Rajasthan, and B.S. Sokhi, Indian Institute of Remote Sensing, India). Suburban fringe areas are characterized by intermingling of vegetation and structural elements. They are also subject to rapid changes in land-cover. Sustainable development of such heterogeneous, complex and dynamic landscapes requires constant monitoring based on proper decision making and up-to-date land-cover information. High-resolution satellite imagery can cost-effectively provide the latter for urban conglomerates. A multitude of methods exist for extracting information in the process from imagery to land-cover maps. Methods can be categorized under three major approaches: pixel-based classification, OBIA and visual interpretation combined with manual digitization of object boundaries [The complete article may be found at: http://www.gim-international.com/issues/articles/id1548-Mapping_Urban_Fringes.html]



[\(Back to Top\)](#)

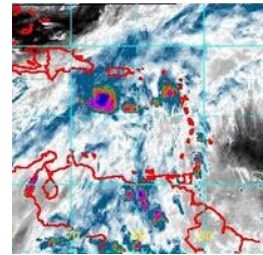
Global Spatial Data Infrastructure Latin America and the Caribbean Newsletter

GIS Tools, Software, Data

[NOAA GOES to South America](#)

Source: <http://caribbean-gis.blogspot.com/>

It's low-resolution (1-4km) imagery from an old sensor with an ageing propulsion system, but nonetheless, according to the US National Oceanic & Atmospheric Administration (NOAA), weather forecasters in South America should now be able to get 'more imagery and data to track dangerous storms – including tropical cyclones – and the storms that can trigger potentially deadly mudslides'. This is because [NOAA has shifted the GOES-12 satellite](#) to a geostationary orbit at 60 degrees West longitude - a position over Brazil and a tad south of Guyana - to cover South America. It became operational on May 10, 2010.



Emergency Mapping Symbology Now Available

Source: GeoConnections List

GeoConnections has released version 1.0 of Canada's new Emergency Mapping Symbology (EMS). Over 200 mapping symbols have been created for use in geospatial products, and will help to provide common understanding of emergency situations and improve information-sharing among emergency-management agencies. In order to create the EMS, a comprehensive research and consultation process was undertaken with emergency management and mapping specialists. The two-tiered symbology was designed to cover a wide range of emergency incident, infrastructure, and operations subjects. The symbols are tailored to Canadian requirements for situational awareness reporting, first response, natural hazards assessment, public alerting, and critical infrastructure protection. The symbols are already being used by federal and provincial agencies, and are a valuable resource for the Multi-Agency Situational Awareness System initiative, which enables emergency management organizations to efficiently share geospatial incident, event and alert information to form a national common operational picture. Future plans for the Emergency Mapping Symbology are to establish a formal standard, and to set up a change-management process to guide the continued development of new symbols and enhancement of the existing symbols and taxonomy. The Emergency Mapping Symbology is free to use, share, modify and extend without restriction. The symbols and documentation can be downloaded from the GeoConnections website at <http://geoconnections.org/masas/ems.zip>.

EBM Tool Demonstration: HumanDimensions.gov

Source: Sarah Carr



The [Ecosystem-Based Management \(EBM\) Tools Network](#) is pleased to announce that it will host a demonstration of the HumanDimensions.gov Web Portal by Jeff Adkins of NOAA Coastal Services Center. This presentation will be held on Thursday, July 22, at 1 pm US EDT/10 am US PDT/5 pm GMT. Space is limited. Reserve your Webinar seat now at: <https://www1.gotomeeting.com/register/521326640>. HumanDimensions.gov, or HD.gov for short, is an interactive informational website and portal linking to methods, tools, data, publications, case studies, jobs, grants, training, and events relating to the human dimensions of natural resource management. Human dimensions of natural resource management include the driving forces behind people's decisions (e.g. psychological, social, spiritual, cultural, economic, political, legal, and managerial forces), how human behaviors lead to ecological and social change, and how

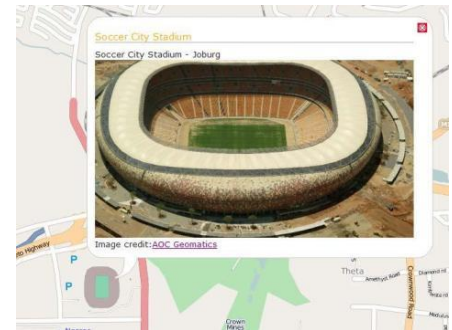
Global Spatial Data Infrastructure Latin America and the Caribbean Newsletter

to address these changes with management. The HD.gov was developed to reduce the time required to find information on applying human dimensions research and resources and help build a community of practice among human dimensions professionals. This webinar will provide an overview of resources available through the HD.gov website, how to use the site, and how to add content to the site. Learn more about HD.gov at www.hd.gov. After registering you will receive a confirmation email containing information about joining the Webinar. For those who cannot make the presentation, a recording of this presentation will be made available on the EBM Tools Network website at www.ebmtools.org/tools_training/presentations.html a few days after the presentation. If you have any other questions about the demonstration, please contact sarah_carr@naturereserve.org. To sign up for announcements of future EBM tool presentations or demonstrations, sign up for EBM Tools Network updates at www.ebmtools.org/contact.html

[Free World Cup Stadium Viewer](#)

Source: <http://www.gim-international.com/>

To celebrate the opening of the 2010 World Cup in South Africa, AAM and partner company, AOC Geomatics, have released two products on their websites: movies/fly throughs of the stadiums in 3D and a free World Cup Stadium Viewer. The World Cup Stadium Viewer is quick and easy to use. Simply click onto one of the soccer balls to open up a Pictometry captured image of the stadium, then click onto the stadium image to start an interactive experience of the stadium with perspectives: north, south, east, west and vertical. Each stadium is being showcased using Pictometry Online. Pictometry Online provides automatic and instant access to oblique and vertical views in an intuitive, easy-to-use web interface. Users have online access to measurement tools such as building height, roof pitch and area. AAM and AOC are constantly updating their Pictometry Online coverage, with extensive coverage already available over South Africa, Australia and New Zealand. AAM and AOC have also released three new 3D building models of the South African World Cup Stadiums on their websites. Movies of these 3D building models showcase the different angles and views over Soccer City Stadium, Green Point Stadium and Ellis Park Stadium. Website: <http://www.aoc.co.za>



[\(Back to Top\)](#)

Training Opportunities

UNIGIS in Latin America - Specialization and Master Programs on GIS, Universidad San Francisco de Quito

Source: Carla Valdospinos

Registration deadline is **August 16**. UNIGIS is a global network of universities offering graduate distance education for professionals in the field of GIS. The program focuses on continued learning, supporting part-time study for professionals who require working at the same time, and all others that pursue a career in Geoinformatics through continuing education. The Universidad San Francisco de Quito USFQ in Quito, Ecuador, is home to UNIGIS Latin America. In collaboration with a number of study centers in several countries in Latin America, UNIGIS offers postgraduate diplomas awarded by the USFQ and the University of Salzburg (Austria). Our programs offer Specialization Degrees (12-14 months) and Masters Degrees (9-12 additional months), granted by the USFQ. Both are full distance learning programs with evaluation of homework assignments electronically. Students may optionally apply to a M.Sc. degree in Geoinformatics awarded by the University of Salzburg by developing their master's thesis in English. A new cycle will begin on October 8 this year. Registration is now open. There are limited spaces so we recommend your early registration. For more information on eligibility, admission, registration, fees, curriculum, etc. please log on to our website at www.unigis.edu.ec and/or contact unigis.oficina@usfq.edu.ec.



Global Spatial Data Infrastructure Latin America and the Caribbean Newsletter

[Applied Geoinformatics for Society and Environment \(AGSE 2010\), Peru](#)

Source: Kate Lance



The overall scope of this series of conferences & summer schools is to offer an interdisciplinary, international forum for sharing knowledge about the application of Geoinformatics with focus on application and on developing countries. This will be achieved by a series of summer schools and conferences in different countries. In 2010, the conference will take place in Arequipa, Peru on August 3-6, 2010 at the Universidad Catolica de Santa Maria, <http://www.ucsm.edu.pe/>. Conference Homepage: <http://www.applied-geoinformatics.org>. The content is twofold and participative. There will be professional training and workshops about current topics in the fields of Photogrammetry and Geoinformatics as well as reports (presentations) from the participants about applications and developments in their countries. The organizers particularly encourage contributions in: Environmental Issues, Sustainable Development, Millennium Development Goals, Photogrammetry, Earth Observation Systems, Information Extraction, Spatial Data Infrastructures, Internet based Applications, LIDAR Data Analysis, GIS and Education, Geoinformatics and Health, Cartography and Geovisualisation, GI Policy and Society, e-Government, Open Source Solutions and Tools, Alumni Session: Experiences. The organizers are open for your additional suggestions. In addition, they plan the following Workshops (preliminary list): Geo-Mashups in the Web 2.0 environment; Open Source GIS and Tools; Workshop on "R" for geospatial Analysis; Geodata Integration; Remote Sensing: Sensors - Data - Value Adding; Workshop Process Management; Adjustment computation and robust estimation; and XML Technologies in Geoinformatics. More information at the website: <http://applied-geoinformatics.org>

[Graduate Course on Spatial Data Infrastructures](#)

Source: <http://www.idesf.santafe.gov.ar/>

Graduate Course on Spatial Data Infrastructure -attendance modality- with duration of 108 hours, from 31 August to 30 November 2010. It will take place in the Technical University (Faculty of Engineering), University Extension Department, in the City of Buenos Aires (www.ingenieriaest.iese.edu.ar) under the auspices of the Argentinean Center of Cartography, Laboratory of Geographic Information Technology of the Polytechnic University of Madrid, and the Laboratory of Geographic Information Technology of the National University of Catamarca. It is aimed at professionals in engineering and surveying, geography graduates, specialists in Geographic Information Systems and others whose main activity is related to geospatial data collection, processing, editing and analysis; who are interested on learning and/or updating their knowledge on this new geosciences' paradigm, the Spatial Data Infrastructures (SDIs). For information and registration please contact: Secretaría de Extensión Universitaria, Av. Cabildo 15 – 1° Piso (C1426AAA) C.A.B.A. Phone: (5411) 4779-3378 / 3344 / 3325 - Fax: (5411) 4779-3385 Email: estcc@iese.edu.ar

[Final GACELA Workshop July 6-7, in Buenos Aires, Argentina](#)

Source: <http://www.galileoic.org/la/>



2010 has started with the signature of major Galileo contracts enabling the Galileo Full Operation Capability phase. This step is the start of the development of the Galileo operational infrastructure. The main challenge for the coming years is to build an infrastructure which offers the necessary solutions to exploit the benefits of the signal of GALILEO

Global Spatial Data Infrastructure Latin America and the Caribbean Newsletter

at the due time. While the majority of revenues (95%) related to the Galileo exploitation is expected to be given by the development of new applications tailored to the needs of end-users, the GNSS Latin American market is prepared and ready to collaborate. In South America, different countries have formally expressed their interest and negotiations under Galileo with the European Commission have started with Brazil, Argentina, Mexico, Colombia and Chile among others. Latin America Region presents not only a great potential GNSS market but also a mature industry and important research expertise. It is actually a challenge for all players – end users, governments, universities, corporations, research centres to join the adventure and have access to test/simulation and validation tools and facilities that allow the research and the development of the GNSS technologies, minimizing the required level of investments. The GNSS Supervisory Authority (GSA), in charge of managing Galileo Research & Development activities under the 7th European Commission Research Programme (7th FP), gives high priority to the International Cooperation in particular with Latin America. Last year, in the frame of the 1st Galileo Call of the 7th FP, the GSA granted the GACELA Consortium to lead the definition of the first Galileo Centre of Expertise for Latin America (GACELA).

[\(Back to Top\)](#)

Funding Opportunities, Awards, Support

[Doctoral Fellowship on Geographic Engineering Universidad Politécnica de Madrid](#)

Source: <http://snitchile.blogspot.com/>



Application deadline is **July 5**. An interesting proposal is the one conducted by the Polytechnic University of Madrid, Spain, opening the competition for grants for its [Doctoral Program on Geographic Engineering](#). To apply you must visit the Chile Scholarship site ([Click here](#) to visit the site), fill out the forms and comply with requirements prescribed in the rules of nomination to the PhD Scholarships Abroad

Contest ([Click here](#) to download the bases). More information regarding the scholarship application at www.becaschile.cl or call 600 425 5050

[OAS Scholarship for Geographic Metadata Management Course](#)

Source: <https://www.oas.org/>



Organización de los Estados Americanos
Departamento de Desarrollo Humano, Educación y Cultura

The course will take place on October 11-15, 2010 in Bogota, Colombia. The Department of Human Development, Education and Culture of the OAS will provide economy class roundtrip airfare between the place of residence of the fellow and the study site. No funds are provided for terminal and transit expenses. The Government of Colombia, through the Geographic Institute Agustín Codazzi (IGAC-CIAF) will cover tuition fees (including tuition and class notes) and through the Colombian Institute of Educational Credit and Technical Studies Abroad (in Spanish ICETEX) will cover room and board, study materials, departure taxes, health insurance and justified unforeseen circumstances.

[Prize for Innovative Ideas for Applications in Satellite Navigation](#)

Source: <http://www.galileoic.org/la/>

Wanted: Innovative Ideas for Applications in Satellite Navigation

€20,000 grand prize. Six special topic prizes, from partners in research and industry. First-ever ESNC University Challenge offering special prize to students. €1 million in funding and other start-up aid for entrepreneurs in 22 partner regions worldwide. The seventh European Satellite Navigation Competition (ESNC) commenced its search for the best applications in satellite navigation at www.galileo-masters.eu. Until the **end of July**, innovators all over the world will

Global Spatial Data Infrastructure Latin America and the Caribbean Newsletter

have the chance to develop their ideas for new products and services based on satellite positioning. In recent years, the ESNC has awarded ideas such as a real-time tour guide service for travelers; a satellite-based method for locating multiple avalanche victims quickly, precisely, and simultaneously; an integrated system for remote prenatal monitoring; a mobile, location-based game that turns players themselves into joysticks; and a system that combines satellite positioning with wind measurements and search-and-rescue dogs' sense of smell. Along with the grand prize – €20,000 and extensive support in realizing the winning idea – this year's competition includes six special topic prizes from partners in research and industry, the first special prize offered to students, and three prizes sponsored in cooperation with the European Network of Living Labs.

Lincoln Institute Accepting Applications for David C. Lincoln Fellowships in Land Value Taxation

Source: Department of Valuation and Taxation, Lincoln Institute of Land Policy

The Lincoln Institute of Land Policy hereby invites applications for David C. Lincoln Fellowships, a program to develop academic and professional interest in land value taxation through support for major research projects. Projects may address either the basic theory of land value taxation or its application to specific domestic or international issues.



Research funding for each approved project will be between \$20,000 and \$30,000 a year. If you are interested in applying for a fellowship, please visit our website at http://www.lincolninst.edu/education/dcl_fellowships.asp for more information and to review the Application Guidelines. Email applications must be submitted to fellowships@lincolninst.edu by **September 1, 2010**. If you have questions about the application process, please contact fellowships@lincolninst.edu.

[\(Back to Top\)](#)

Employment Opportunities

[Director – OGC Interoperability Certification](#)

Source: <http://www.opengeospatial.org/>

Please note that this Request will remain open until the position is filled. This position will have overall responsibility for OGC's interoperability compliance development, validation and certification program.



The Director will lead interoperability certification that encompasses: ensuring excellent compliance requirements in the standards, compliance test and certification and plugfests that mature interoperability in implemented products. The Director will work with OGC members and staff to ensure that adopted standards include rigorous test assertions. The Director will work with OGC members and staff to insure an operational compliance test program including the maintenance of the OGC Test Evaluation and Measurement (TEAM) engine, test scripts and management of trouble tickets applicable to compliance test. After issues are resolved, the Director issues compliance certification using the OGC Portal. The Director will lead Plugfest initiatives that build on the OGC compliance certification. The Director will lead a major revision of the Plugfest Policies and Procedures, and will ensure continual maintenance of these policies and procedures. The Director must also become familiar with adopted standards, developing specifications, abstract test suites and executable test suites to identify whether the issues are with OGC's resources or the applicant's software. In some cases, the Director may be tasked with editing specification documents to improve their clarity and testability. As a member of the OGC Interoperability Program, the Director will support other Interoperability Initiatives such as testbeds and pilots. Support of these other initiatives will be secondary to the Interoperability Certification. Interested parties should send resume, CV and/or intent of interest to: employment@opengeospatial.org. Detailed information at <http://www.opengeospatial.org/node/1109>

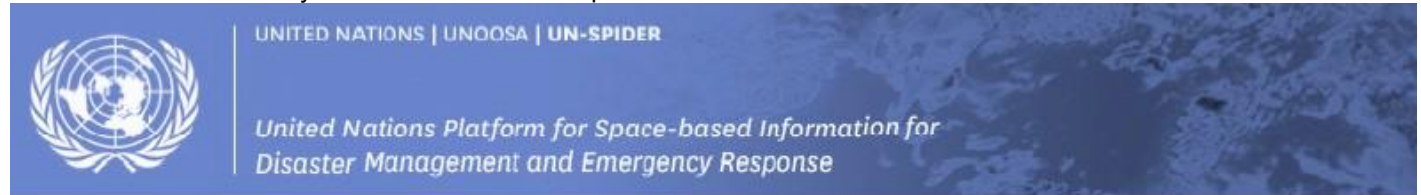
[\(Back to Top\)](#)

Global Spatial Data Infrastructure Latin America and the Caribbean Newsletter

Other

[Special session conducted by UN-SPIDER during the 2nd Hemispheric Encounter on National Mechanisms and Networks for Risk Reduction](#)

Source: UN SPIDER May 2010 Newsletter and Updates



UN-SPIDER NEWSLETTER

Taking advantage of the 2nd Hemispheric Encounter of Santa Marta, Colombia, titled "From Theory to Practice" from 14 to 16 April 2010, UN-SPIDER organized and conducted the special session "Space-based Applications for Managing Risk Reduction and Emergency Response in Latin America and the Caribbean" to promote the SPIDER Thematic Partnership for Latin America and the Caribbean. The session allowed UN-SPIDER to bridge the space community represented through the Colombian Space Commission (CSC) and the Argentinean National Commission on Space Activities (in Spanish CONAE), and the community working in the field of disaster risk management. The session allowed representatives of space commissions of South American countries to present examples of their activities, as well as the presentation of a geo-viewer for displaying information based on which to make decisions in case of disasters, UN-SPIDER staff to present this programme and the SPIDER Thematic Partnership for Latin America and the Caribbean, and to discuss elements to elaborate a Plan of Action for the Thematic Partnership with a focus on disaster risk management to support national platforms for disaster risk reduction. Suggestions included the conduction of a workshop to identify how to tailor space-based information so that it can be utilized more efficiently and quickly by disaster management agencies in the assessment of risks, as well as in the context of early warning.

[\(Back to Top\)](#)

Americas: Conferences, SDI Events

[Year 2010](#) [January](#) [February](#) [March](#) [April](#) [May](#) [June](#) [July](#) [August](#) [September](#) [October](#) [November](#) [December](#)
[Year 2011](#) [January](#) [February](#) [March](#) [April](#) [May](#) [June](#) [July](#) [August](#) [September](#) [October](#) [November](#) [December](#)

JULY 2010		
3-7	Edmonton Alberta, Canada	24th International Congress for Conservation Biology
8	São Paulo SP, Brazil	Quality of Geospatial Data: Learn how to obtain a precise geographic base quickly
8-10	Lima, Perú	8th International Exhibition GEOEXPO 2010
8-11	Monterrey CA, USA	2010 Society for Conservation GIS (SCGIS)
8-12	San Diego CA, USA	ESRI International User Conference
10-13	San Diego CA, USA	2010 ESRI Education User Conference, Survey & Engineering GIS Summit, Homeland Security GIS Summit
11-12	San Diego CA, USA	2010 ESRI Business GIS Summit
11-15	San Diego CA, USA	ESRI International User Conference

Global Spatial Data Infrastructure Latin America and the Caribbean Newsletter

12-16 *NEW*	SJ Campos-SP, Brazil	Course: Introduction to Astronomy and Astrophysics
12-16	San Diego CA, USA	2010 ESRI International User Conference
12-16	Houston TX, USA	The Fifth International Conference on Environmental Science and Technology 2010 - IC EST2010
14-16	Caracas, Venezuela	2nd Latin America and the Caribbean qvSIG Working Days: "Uniting People Around the World"
15 *NEW*	Reston VA, USA	GEOINT Community Career Fair
15-16	San Diego CA, USA	MAPublisher Training
18-21	Denver CO, USA	10th International Conference on Precision Agriculture
19-23 *NEW*	SJ Campos-SP, Brazil	Scholar Use of Remote Sensing for Environment Studies
21-23 *NEW*	Rio de Janeiro RJ, Brazil	Seminar on Cartographies and Social Planning in Latin America
23-27	San Diego CA, USA	ESRI User Conference
25-30	Honolulu, HI, USA	IGARSS'10: IEEE International Geoscience & Remote Sensing Symposium
26-30	Vancouver, B.C. Canada	GeoWeb 2010 Contact: info@geowebconference.org
26-30	Los Angeles CA, USA	SIGGRAPH 2010
26-30 *NEW*	SJ Campos-SP, Brazil	Dynamics Days South America 2010 - International Conference on Chaos and Nonlinear Dynamics
27-30	Recife PE, Brazil	3rd Brazilian Symposium on Geodesic Sciences and Geoinformation Technologies - III SIMGEO
28-30	Baltimore MD, USA	Intelligent Spatial Decision Analysis ISDA '10 in conjunction with International Symposium on Intelligent Decision Technologies (IDT'10) Email: beniamino.murgante@unibas.it
28-30	Vancouver, Canada	GeoWeb 2010 - 3D City Modeling Academic Track E-mail: h.ledoux@tudelft.nl
28-30	Vancouver, Canada	IC WG IV/II GeoWeb 2010 - Sensor Web Academic Track E-mail: steve.liang@ucalgary.ca
28-30 *NEW*	Newton MA, USA	Maptitude Training
Jul 29-Ago 2	Incline Village NV, USA	MAPPS 2010 Summer Conference

AUGUST 2010

2-6	Orange County CA, USA	Accela User Conference 2010
3-6	Buenos Aires, Argentina	Scientific Committee on Antarctic Research (SCAR) Open Science Conference (OSC)
3-6	Arequipa, Peru	Applied Geoinformatics for Society and Environment (AGSE)
3-7	Toledo OH, USA	Local Food Systems in Old Industrial Regions: Challenges and Opportunities (IGU Commission on the Dynamics of Economic Spaces)
4-6	Curitiba, Paraná, Brazil	ANPP 2010 - Policy and Planning Workshop
5-6	Santa Fe de la Veracruz, Argentina	V Working Days on Spatial Data Infrastructure of the Argentinean Republic (V IDERA)
8-11	Maringá PR, Brazil	7th Brazilian Symposium on Geotechnical and Geoenvironmental Mapping (7 SBCGG)

Global Spatial Data Infrastructure Latin America and the Caribbean Newsletter

8-12 *NEW*	Foz do Iguaçu, Brazil	2010 The Meeting of the Americas
8-13	Foz do Iguaçu, Brazil	American Geophysical Union (AGU) Joint Assembly
13-19	Foz do Iguaçu, Brazil	Managing Waveform Data and Related Metadata for Seismic Networks
15-18	Boston MA, USA	2010 APWA International Public Works Congress & Exposition
16-18	Charlotte NC, USA	2010 URISA/NENA Addressing Conference
16-20	Fortaleza, Brazil	2nd International Conference on Climate, Sustainability and Development in Semi-arid Regions (ICID 2010)
23-27 *NEW*	SJ Campos-SP, Brazil	1st Interdisciplinary Conference on Computational Science (CCIS 2010)
23-25	Indianapolis IN, USA	FEMA - 4th Annual HAZUS Conference
25-27 *NEW*	Buenos Aires, Argentina	VIII Biennial Symposium on Spatial Transformations Contact: Marta Panaia coloquioaugm8@hotmail.com
26	The Woodlands TX, USA	GeoGathering 2010
26-29	Rio de Janeiro RJ, Brazil	International Seminar - Metropolis, Inequalities and Democratic Planning
Aug.29-Sep.1	São Carlos SP, Brazil	Ibero-American Symposium on City and Culture: New Urban Spatialities and Territorialities (SILACC 2010)
Aug.30-Sep.2	Las Vegas NV, USA	Intergraph 2010

SEPTEMBER 2010

1-3	Río Gallegos, Santa Cruz, Argentina	IV Regional Working Days on Geographical Information and Land Management (IVJIGOT)
9-10	Philadelphia PA, USA	MAPublisher Training
12-14	Washington DC, USA	IMTA (AMERICAS) Conference & Trade Show 2010
12-16	Vancouver BC, Canada	15th International Union of Air Pollution Prevention and Environmental Protection Association's World Clean Air Congress: Achieving Environmental Sustainability in a Resource Hungry World
12-16	Minneapolis MN, USA	National States Geographic Information Council (NSGIC) Annual Conference
13-16 *NEW*	Santa Maria RS, Brazil	3rd Geomatics Week - The Geo-environment in which we live: State of the art and perspectives
14-17	Loveland CO, USA	GIS in the Rockies 2010
15-17 *NEW*	Tocantins, Brazil	X Geographic Meeting of Tocantins
15-17	Columbus OH, USA	2010 Ohio GIS Conference
16-17	Edmonton AB, Canada	ESRI Regional User Conference
16-18	San José, Costa Rica	11th International Congress on Geomatics: Geodesy and Topography in Real Time
19-24	Montreal, Canada	IWA World Water Congress and Exhibition
20-24 *NEW*	Paraná - Brazil	Simpec II - Paranaense Symposium on climate studies and 19th Week of Geography
21 *NEW*	Mexico DF, Mexico	Latin American Conference on GIS in Education
21-24 *NEW*	Portland, OR, EUA	ION GNSS 2010 Conference Programme
22	Washington DC, USA	LI Geocloud 2010
22	Washington DC, USA	Location Intelligence 2010

Global Spatial Data Infrastructure Latin America and the Caribbean Newsletter

NEW 22-24	Mexico DF, Mexico	17th Latin American ESRI Users Conference 2010
22-24	Merida, Venezuela	1st Venezuelan National Congress on Geographic Information Systems GIS - CONAVESIG
23-24	Calgary, Alberta, Canada	GIS for Oil & Gas Conference and Exhibition
23-24	Daytona Beach FL, USA	4th Annual Central Florida GIS Workshop
26-30	Fortaleza, Ceará, Brazil	IX Brazilian Symposium on Geographical Climatology - IX SBCG
Sep.26-Oct.1	Belém, Pará, Brazil	45th Brazilian Congress of Geology
27-30	Jackson Hole WY, USA	Remote Sensing & Hydrology Symposium 2010
28-29	Plymouth MI, USA	PLM Road Map 2010
Sep.28-Oct.1	Orlando FL, USA	GIS-Pro 2010: URISA/48th Annual URISA Conference & Exposition
Sep.29-Oct.1	Merida, Venezuela	1st National Congress on Geographic Information Systems GIS (ConaSIG) E-mail: aseciam@gmail.com or aseciam@ula.ve
Sep.29-Oct.3	Savannah GA, USA	National Conference on Geography Education
Sep.30-Oct.1	Regina SK, Canada	ESRI Regional User Conference
Sep.30-Oct.2	Tempe AZ, USA	International Associations for the Study of the Commons USA Regional Meeting

OCTOBER 2010

3	Santiago, Chile	GEOSS Workshop XXXIX – Forest and Bio-energy
4-8	Santiago, Chile	Latin American Remote Sensing Week
4-6	Atlantic City NJ, USA	MAC URISA 2010 Conference
5-7	Rio Claro, São Paulo, Brazil	I Brazilian Congress of the Space Organization and X Graduate Geography Seminar UNESP Rio Claro
6-7	Toronto ON, Canada	ESRI Regional User Conference
6-8	Binghamton NY, USA	Race, Ethnicity and Place Conference
8-12	Guanajuato, Mexico	14th SELPER International Symposium
8-12	Buenos Aires, Argentina	International Congress on Bicentenary Geography, 71st Geography Week
10-14	Florianópolis, SC, Brazil	9th Congress of Multipurpose Technical Cadastre and Territorial Management COBRAC 2010
12-14 *NEW*	Guayaquil, Ecuador	International Workshop on ENSO, Decadal Variability and Climate Change in South America
13-15	Frankfort KY, USA	2010 Kentucky GIS Conference
16	Cáceres MT, Brazil	3rd Symposium on Wetland Geotechnologies Further information: http://www.geopantanal.cnptia.embrapa.br/2010/
17-20	Dearborn MI, EUA	2010 ESRI Electric & Gas User Group Conference
18-20	Denver CO, USA	2010 ESRI Health GIS Conference
18-22	Singapore, Singapore	GSDI 12 World Conference 2010: Realizing Spatially Enabled Societies
18-22	Orlando FL, USA	E-Learn 2010
19-20	Ottawa, Canada	ESRI Regional User Conference
19-21	Curitiba Paraná, Brazil	IX Updated Seminar on Remote Sensing and Geographic Information Systems Applied to Forestry Engineer
19-23	San Francisco CA, USA	Oracle OpenWorld
20-21	Naperville IL, USA	ILGISA Fall Conference

Global Spatial Data Infrastructure Latin America and the Caribbean Newsletter

20-22	La Cumbre, Cordoba, Argentina	First International Conference on Advances in New Technologies, Interactive Interfaces and Communicability (ADNTIIC 2010)
20-22	Santiago, Chile	IAOS/Scorus Conference on Official Statistics and the Environment: Approaches, Issues, Challenges and Linkages
20-23	Fort Worth TX, USA	Applied Geography Conference
24-26	Saratoga Springs NY, USA	2010 New York State Geographic Information Systems (GIS) Conference
24-27	Lake Buena Vista FL, USA	Pictometry FutureView 2010
25-26	Montevideo, Uruguay	First Uruguayan Congress on Spatial Data Infrastructure: Contributing to Development of a Regional Network
25-28 *NEW*	Houston TX, USA	GITA's GIS for Oil & Gas Conference
25-28	Nashville TN, USA	GEOINT Symposium 2010
26-27	Fredericton NB, Canada	ESRI Regional User Conference
Oct.28-Nov.1 *NEW*	Sao Paulo SP, Brazil	GEOINFO 2010 - XI Brazilian Symposium on Geoinformatics

NOVEMBER 2010

1-4	Nashville TN, EUA	GEOINT 2010
1-5	Vancouver BC, Canada	4th International Workshop on Semantic and Conceptual Issues in GIS (SeCoGIS 2010)
2 *NEW*	San Jose CA, USA	1st International Workshop on GeoStreaming (IWGS2010)
2-3	Vancouver BC, Canada	ESRI Regional User Conference
2-5	San Jose CA, USA	ACM SIG SPATIAL GIS 2010
4	Oakville, Ontario, Canada	GITA Ontario Chapter Fall Forum 2010
4-5	Denver CO, USA	MAPublisher Training
8-10	Las Vegas NV, USA	Trimble Dimensions 2010
8-12	Guanajuato, Mexico	XIV International SELPER Symposium "Observation & Monitoring of the Earth Related to Climate Change" (An ISPRS Regional Conference) E-mail: silvia.casas757@gmail.com
8-12	Lima, Perú	Joint Meeting of PAIGH Board Council, Americas Geocentrical Reference System (in Spanish SIRGAS) and School of "References System" (in Spanish IAG-SIRGAS)
15-21	Bahía Blanca, Argentina	1st Working days on new Southern Argentina Geographic Information Technologies Further information: Jornadasinfogeo@gmail.com
15-19	Orlando FL, USA	AutoCarto 2010
15-19	Orlando FL, USA	ASPRS/CaGIS 2010 Fall Specialty Conference
16-17	Huntsville AL, USA	Rocket City Geospatial 2010
16-18	Orlando FL, USA	Commission IV Symposium "Geodatabases & Digital Mapping" / Marguerite Madden (President Commission IV) / mmadden@uga.edu
16-19	Orlando FL, USA	ISPRS Commission IV - Geodatabases and Digital Mapping
16-19	Havana, Cuba	IV Conference of the Latin American Population Association "Cultural conditions and transformations, economic factors, and demographic trends in Latin America"
17-18	Tallahassee FL, USA	Seven Hills Regional User Group for GIS (SHRUG)
17-18	St. John's NL, Canada	ESRI Regional User Conference
22-26	San Miguel de Tucumán, Argentina	First Latin-American Congress (IV Argentinean) on Biodiversity and Conservation 2010 , Information: info@biodiversidad.com.ar
Nov. 30-Dec 2	Las Vegas NV, USA	Autodesk University 2010 Conference and Exhibition

Global Spatial Data Infrastructure Latin America and the Caribbean Newsletter

DECEMBER 2010

6-10 *UPDATED*	Port of Spain, Trinidad	URISA's 5th Caribbean GIS Conference
---------------------------------	-------------------------	--

YEAR 2011

[Year 2011](#) [January](#) [February](#) [March](#) [April](#) [May](#) [June](#) [July](#) [August](#) [September](#) [October](#) [November](#) [December](#)

JANUARY 2011

19-21 *NEW*	Washington DC, USA	ESRI Federal User Conference (FedUC)
------------------------------	--------------------	--

FEBRUARY 2011

2-4 *NEW*	Washington DC, USA	ESRI Federal User Conference (FedUC)
7-9 *NEW*	New Orleans LA , USA	International LiDAR Mapping Forum
23-24 *NEW*	Redlands CA, USA	2011 ESRI California/Hawaii/Nevada Regional User Group Conference
23-28 *NEW*	Gosier, Guadeloupe, France	GEOProcessing 2011: Third International Conference on Advanced Geographic Information Systems, Applications, and Services

MARCH 2011

6-8 *NEW*	Palm Springs CA, USA	2011 ESRI Worldwide Business Partner Conference (BPC)
7-10 *NEW*	Palm Springs CA, USA	2011 ESRI Developer Summit
21-24 *NEW*	Myrtle Beach SC, USA	Coastal GeoTools 2011
28-31 *NEW*	Fresno CA, USA	17th Annual California GIS Conference - Meeting California's Challenges

APRIL 2011

14-15 *NEW*	Resistencia – Chaco, Argentina	First National Congress of Geographic Information Technologies and Fourth Meeting of Members of Geographic Information Technologies of the NEA Contact: labtig@hum.unne.edu.ar
------------------------------	--------------------------------	--

MAY 2011

1-5 *NEW*	Milwaukee WI, USA	ASPRS 2011 Annual Conference "Ride On The Geospatial Revolution"
2-4 *NEW*	Jacksonville FL, USA	2011 ESRI Southeast Regional User Group

JUNE 2011

27-30 *NEW*	Atlanta GA, USA	2011 URISA GIS in Public Health Conference
------------------------------	-----------------	--

[\(Back to Top\)](#)

Global Spatial Data Infrastructure Latin America and the Caribbean Newsletter

Please mention SDI-LAC as source of information in any correspondence you may have on items in this issue

To subscribe to SDI-LAC, please do so online at:
<http://www.gsdi.org/newslist/gsdsubscribe.asp>
Nancy Aguirre, PAIGH, Editor cnaguirre@ipgh.org
Global Spatial Data Infrastructure Association,
<http://www.gsdi.org>

DISCLAIMER:
GSDI, PAIGH and the Editor will not be held liable for any errors, mistakes, misprints or incorrect information. Copyright © 2010. All rights reserved.