

Global Spatial Data Infrastructure

Latin America and the Caribbean Newsletter

SDI-LAC

July

2012

Vol. 9, No.7

Spatial Data Infrastructure-Latin America and the Caribbean (SDI-LAC) is a regional, monthly, and free, electronic newsletter from the [Global Spatial Data Infrastructure Association](#) (GSDI). It focuses on aspects related with Spatial Data Infrastructure, and on GIS, remote sensing, and data management issues, related with SDI in Latin America and the Caribbean. It aims to raise awareness, provide useful information to strengthen national SDI initiatives, and support synchronization of regional efforts.



Global Spatial Data Infrastructure

GSDI

[GSDI Definition](#)

The [Pan-American Institute of Geography and History](#) (PAIGH), member organization of GSDI, and the [Permanent Committee on Geospatial Data Infrastructure for the Americas](#) (PC-IDEA), promote SDI development in the region. The newsletter is prepared by PAIGH for GSDI.

[Message from the Editor](#)

[Input to this Issue](#)

[Editorial](#)

[Global and Regional SDI, News, Presentations](#)

[IGS News, Links, Publications](#)

[National SDI, News, Links, Presentations](#)

[Articles and Publications of the Month](#)

[Geospatial Research, Applications, Software, Data](#)

[Training and Funding Opportunities, Awards](#)

[Employment Opportunities](#)

[Other](#)

[Americas: Conferences, SDI Events \(Year 2012\) \(Year 2013\)](#)



Message from the Editor

Translation of SDI-LAC Portuguese is possible thanks to undergrad students from UNESP **Mateus de Barros Manhani** and **Esrom A. Rissate Júnior** and the cartographers engineers: **Eduardo Freitas Oliveira**, MSc in GIS, editor of the portal MundoGEO and magazine MundoGEO; **Silvane Paixão**, MSc in Geodetic Sciences and Geoinformation Technologies, PhD in Land Administration and Land Information Management; **Camila Bassetto Guedes**, advisor of the Operations Department of the Air Space Control (in Spanish DECEA), **Juan Carlos Girona Mamani**, a consultant in Geotechnology and IT solutions for Geoinformation, **Annette Pic**, MSc in Remote Sensing; **Edilce Figueiredo Burity**, MSc in Computer Systems and Technologist of IBGE/PE Geographic Information and Statistics. Under the general coordination of Silvane Paixão.

Back issues of the newsletter are at the GSDI website: <http://www.gsdi.org/newsletters.asp>

Editor, Nancy Aguirre, Pan-American Institute of Geography and History (PAIGH), <http://www.ipgh.org>, cnaguirre@ipgh.org

SDI-LAC Newsletter 100 edition!

This month GSDI regional Newsletter for Latin America and the Caribbean (SDI-LAC) reaches its 100 edition! The newsletter started up in January 2004 under editorship of Kate Lance who led its matters during thirteen numbers that included bilingual versions of some of their reported news. In July 2005, the Pan-American Institute of Geography and History (PAIGH) assumed its continued monthly edition until present (Nancy Aguirre, Editor on behalf of PAIGH).

PAIGH made several contributions to this endeavor. Among them is the consistent versioning of SDI-LAC Newsletter in Spanish and English and efforts to translating the Newsletter into Portuguese both during 2007-2009 and since August 2011 to the date. This Newsletter has produced 205 versions to 100 monthly editions. We thank the invaluable help from many Brazilian nationals who partaken in this initiative (besides those listed above, Silvana Camboim), with Eduardo Freitas participating during both periods. The Newsletter had also benefit of correspondent members from countries of the region including Carlene Boodoo of Trinidad and Tobago, Javier Nuñez-Villalba of Bolivia, and



Global Spatial Data Infrastructure

Latin America and the Caribbean Newsletter

Eduardo Freitas of Brazil. In addition, both SDI-LAC's templates and sections have been slightly modified throughout these years, with most recent changes taking place in October 2010, which included a subdivision devoted to the International Geospatial Society (the individual membership arm of GSDI Association), and a redesign to more geographically oriented information sections.

During 9.5 years, SDI-LAC Newsletter has reported more than 4,400 news on geospatial, SDI, and capacity building initiatives, from the Americas and the rest of the world. Women and men who contributed news (41% and 59% of the total respectively) played a key role to making visible many initiatives yearly, thus fostering valuable knowledge sharing throughout the geospatial community; among these are the following:

In 2004, the Mexican Law on Statistical and Geographical Information (in Spanish LIEG) was published; the Bahamas Government signed an agreement to reactivate the National GIS Centre; the National Council on Geoinformatics of Ecuador (in Spanish CONAGE) was established; the Guyana GIS Policy gave birth; the OpenGIS Web Map Server Cookbook was available; Development of the Regional Monitoring and Visualization System (SERVIR) by NASA and other partners took place; the SDI Cookbook v2.0 was announced; the proposal for an INSPIRE Directive (Infrastructure for Spatial Information in the European Community) was adopted by the European Commission; and a UN (United Nations), FIG (International Federation of Geometres), PC-IDEA Inter-regional Special Forum took place...

In 2005, SDI-LAC discussion list was established; ISO/TC211 approved the OGC Web Map Service as an International Standard; the Spatial Data Infrastructure for the Capital District of Bogota, Colombia was created (in Spanish IDECA); the free GIS of the Generalitat Valenciana (gvSIG) released its source code; the Brazilian National Geospatial Framework Project was launched; Cuba launched the GeoPortal for its National SDI (in Spanish IDERC); a Caribbean workshops on SDI Performance Measurement and Evaluation took place; Google releases Google Earth; the UNGIWG (United Nations Geographic Information Working Group) website was updated...

In 2006, GSDI-9 Conference took place in Santiago, Chile; U.S.- Mexico Border Environmental Health Initiative began; a Draft Government Bill to create the Territorial Information System of Peru was enacted; PAIGH Approved Resolutions related to SDI for the Americas; MAGNA SIRGAS_PRO V 1.1 was available; it was held a PC-IDEA Workshop on SDI as a function of Latin-American necessities; the Supreme Decree (SD) No. 28, creates the National Territorial Information Coordination System of Chile (in Spanish SNIT); there was a New law under discussion to create NSDI in Uruguay; Grenada undertakes the LIDAR Remapping Project; Virgin Islands GIS was ongoing; the Andean SDI was being promoted; a SIRGAS workshop took place; GSDI calls for joining as an individual member; the *International Journal of Spatial Data Infrastructures Research* (IJS DIR) was launched...

In 2007, the GeoSUR Program initiated; INPE (National Institute of Space Research) put its Spatial Program to the Service of Brazilian Society; Cadastral Information System of Paraguay was designed; Implementation in Nicaragua of the Integrated Cadastral and Registry Information System (SIICAR) started; the National Law of Cadastre in Argentina was sanctioned; Portal of the Colombian SDI (in Spanish ICDE) was launched; it was held the 1st Argentinean SDI Day; the Official Street Atlas of Cayman Islands was published; Webpage of the Permanent Committee on Cadastre in Ibero-America (CPCI) was launched; St. Vincent and the Grenadines National GIS was established; Peru declares its NSDI Project viable (in Spanish IDEP); the Latin-American Metadata Profile was Proposed by the Geographic Institute "Agustín Codazzi" (IGAC)-PAIGH; Global Map of the Americas was underway; the Andean Community SDI (IDECAN) was born; NRCan began offering its e-topographic mapping data for free; the UNSDI (United Nations Spatial Data Infrastructure)-Netherlands Coordination Office (NCO) was established...

In 2008, the Ecuadorian Geospatial Data Infrastructure (IEDG) was launched; the Landsat Image Mosaic of Antarctica (LIMA) was available; Bonaire's Reef was mapped as benchmark for the entire Caribbean; Mesoamerican Initiative on Natural Disasters Prevention and Mitigation (in Spanish IMPMDN) was underway; INPE presents the Amazonian Monitoring Systems to the Senate; Law on the National Statistical and Geographical Information System (in Spanish SNIEG) was approved in Mexico; NSDI of Uruguay was launched; LICJ (Land Information Council of Jamaica) launched the Official Website for Jamaican NSDI; PAIGH's Resolution on International Standards was published; GEO Summit Latin America 2008 took place; Interim UNSDI Framework was published; United States Implements Free Access Data Policy for Landsat; GeoEye-1 Satellite was launched; *International Journal of Digital Earth* started up; OGC (Open Geospatial Consortium) Advanced GEOSS (Global Earth Observation System of Systems);



Global Spatial Data Infrastructure

Latin America and the Caribbean Newsletter

Interoperability; world's biggest geological mapping project OneGeology began; Next-Generation Digital Earth was underway...

In 2009, the NSDI of Brazil (INDE) was established; the Geospatial Data Infrastructure of Venezuela (IDEGeoVen) was launched; Belize's 1st NSDI Conference was held; Prototype of the new webpage of UNIGIS in Latin America was online; the Earth Observation Research Program was established in Colombia; PAIGH establishes the foundations for the "Pan-American Laboratory for the Observation of Natural Disasters" and supports the Creation of the Ibero-American Network of GI; GeoSUR launched the Remote Technical Assistance Program; the Experimental SIRGAS Processing Center began; Chilean SNIT now includes Web 2.0; SDI Prototype Geportal launched in Guatemala; a Case study on the NSDI in Trinidad and Tobago was published; 1st SIRGAS School on Reference Systems took place; New website of the SDI Coordinating Committee of Peru was launched; 1st Latin American and Caribbean gvSIG Users Working Days; Activities and experiences of Suriname in the field of SDI were published; LICJ Newsletter launched; Brazil to chair PC-IDEA during the 2009-2013 period; INPE (Brazil) distributes 1 million free satellite images; the Spanish version of the Guide to ISO/TC 211 Standards was published; the memorandum for establishing the Ibero-American Network of Geographic Information Infrastructure (R31Geo) was signed; Systems of Systems as a Conceptual Framework for SDIs; GSDI and partners' book entitled *A Multi-View Framework to Assess Spatial Data Infrastructures*; GSDI Cookbook in a wiki; SPOT Comes to USGS Archive of Earth Observation Imagery....

In 2010, the Development of the Argentinean NSDI is ongoing; Brazil's 1st Version of Geospatial Metadata Profile was available; Haiti: from zero to SDI in a week; Committee on SDI of Peru (CCIDEP) implemented the GEOIDEP Portal; ICDE (Colombia) campaigned for consolidating local nodes; Provincial Geospatial Portal for Villa Clara (Cuba) was established; SDI of Venezuela (IDEVEN) was launched; iMap Jamaica was launched; the Mesoamerican Territorial Information System was ongoing; New Communication Platform for the Argentinean SDI Project (in Spanish IDEAR, IDERA) was promoted; New Geographic Names Application in Cuba was established; Ecuador Approved its National Geospatial Information Policy; 1st International Geospatial Society (IGS) Election for President and Vice-president were informed (Argentina and Colombia respectively); the 1st Uruguayan Congress on SDI took place; Consolidation of Geographic Information Policy in Colombia; Marine GIS in the Grenadines; Map Law reform in Argentina; FOSS4G Community established in Chile; OGC launched the Iberian and Latin American Forum (OGC ILAFA); Google's Global Geographic Names published; a suggested new aspect for the New Generation of Digital Earth - Human behavior and decision making; First Review of GEOSS (5-years); Geo Standards Wiki Opened (Netherlands); 2nd Preparatory Meeting of the Proposed GGIM...

In 2011, the Panamanian Spatial Data Infrastructure (in Spanish IPDE) was launched; GeoSUR joined GSDI; Costa Rica's Online Land Registry was established; SDI of the State of Bahia (IDE/Ba), Brazil was underway; the Latin American Community SDI (Latin-IDE) was created; the 1st NSDI Bulletin, Brazil was edited; FOSSGIS Brazil Journal – 1st Edition was published; GEOSS was supporting sustainable tourism in the Caribbean; SPIDER Regional Platform for Disaster Risk Reduction of the Americas was a reality; the Mesoamerican Territorial Information System (in Spanish SMIT) was born; a New FGDC (Federal Geographic Data Committee) Geospatial Platform, USA was published; the gvSIG Training Platform was launched; the Global Drought Monitoring System of Systems of GEOSS was established; the United Nations Committee on Global Geospatial Information Management (GGIM) was proposed....

And in 2012, IGAC (Colombia) gave access to the Country's Basic Geographic Information; the Open Source Geospatial Foundation (OSGeo) and the International Cartographic Association-ICA's MoU established the 1st Open Source Geospatial Laboratory in South America; IDERA (Argentina) launched a Virtual Campus; Cajamarca Local SDI, Peru is ongoing; SDI of the Jujuy Provincial Government, Argentina is a reality; the GeoBolivia SDI Portal was launched; SDI Nursery (academic initiative) is underway in Colombia; Paraguay Joined GeoSUR; Capital District of Bogota SDI (in Spanish IDECA) launched a new Web Portal, Colombia; gvSIG Association Announced Establishment of the gvSIG Chile Community; the Bahamas SDI and the National Geographic Information Services (BNGIS) Centre is reported; GSDI 13 in Canada was a great success; 1st Edition of GeoSUR Award was published; ETISIG: Catamarca-SDI has a Comprehensive Training Program in Argentina; Chile is now part of ISO/TC 211 Technical Committee; GSDI Book: *Spatially Enabling Government, Industry and Citizens: Research and Development Perspectives* was distributed; the Book of Ibero-American authors *SDI Fundamentals* was published; PostGIS 2.0 was released...

Global Spatial Data Infrastructure

Latin America and the Caribbean Newsletter

On the other hand, statistics of the reported news in SDI-LAC Newsletter for the 2004-2012 period show some interesting figures. Please note that these figures are only related to the news comprised in the last 100 editions of the Newsletter.

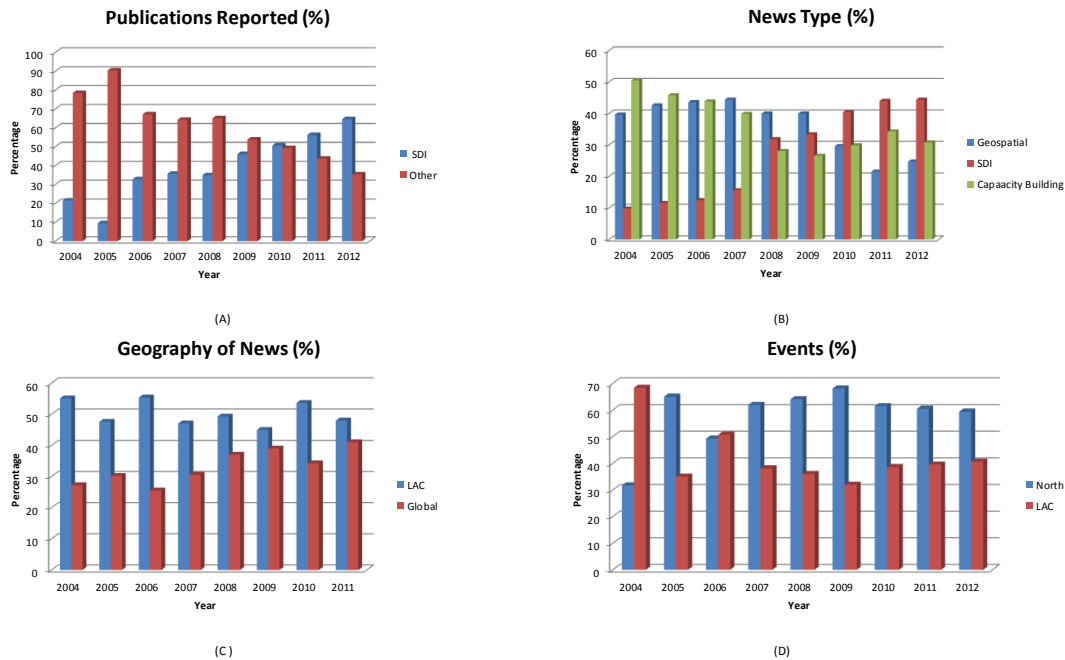


Figure A shows the proportion of publications reported in SDI-LAC Newsletter in two categories during the analyzed period: SDI, and other topics. It depicts a trend towards an increasing proportion of publications on SDI topics with respect to those on other themes (including a broad range of geospatial applications and institutional/organizational endeavors).

Likewise, news reported in SDI-LAC editions were classified into three types: (i) those related to geospatial initiatives; (ii) those related to SDI initiatives properly; and (iii) those informing on capacity building (including workshops, courses, and undergraduate/graduate academic programs) (Figure B). SDI-LAC Newsletter reported a much lesser proportion of SDI-related news in comparison to the geospatial and capacity building types during 2004-2007. However, from year 2008 onwards the proportion of these three types of news reported are much closer to each other (from around 25% to 40% approximately), while during 2010 to 2012 the percentage of SDI related news outnumbers the other two types of news considered.

The geography of the news reported in SDI-LAC Newsletter during 2004-2011 (Figure C) shows a gradual closing of the gap between the reported news of Latin America and the Caribbean (LAC region), in comparison to those from the rest of the world (Global).

Finally, the events taking place in the Americas (Figure D) for 2004-2012, which are reported in the bottom table of SDI-LAC Newsletters, during last three years depict a proportion of 60% of North American events to 40% of LAC region's events.

Although statistics on the contents of SDI-LAC Newsletter should not be analyzed independently of broader contexts, these may be used to support studies on SDI evolution in the LAC region over the analyzed period, and to help highlighting some pertinent landmarks. We hope that SDI-LAC Newsletter have increased awareness on the state of the art of SDI initiatives in the region, thus contributing to establishing regional baselines and representations.

Nancy Aguirre, Editor SDI-LAC Newsletter on behalf of PAIGH

[\(Back to top\)](#)



Global Spatial Data Infrastructure

Latin America and the Caribbean Newsletter

Input to this Issue

Sergio Acosta y Lara	Department of Geographic Information, Bureau of Surveying (MTO), SDI Working Group (GTIDE-AGESIC), Uruguay
Nelma Bènia	President the Association of Uruguayan Surveyors
Santiago Borrero	Secretary General, Pan-American Institute of Geography and History, PAIGH, Mexico
Arturo Brun-Martinez	Architect, Colombia
Ellen Hines	Professor Marine and Coastal Conservation and Spatial Planning Lab., Department of Geography and Human Environmental Studies, San Francisco State University, USA
Kate Lance	SERVIR, NASA/USRA Coordinator, Huntsville, AL, USA
Harlan Onsrud	Executive Director, GSDI Association, USA
Jessica Robbins	Islands Communications Manager, Media Impact and Global Island Partnership (GLISPA), New York, USA
Joaquin Segura Martin	Master's Degree in Assessment and Geographic Information Systems, Quality Management, University of Jaén, Spain
Eric van Praag	Coordinator, GeoSUR Program
F. Javier Zarazaga-Soria	Associate Professor, IAAA Laboratory, University of Zaragoza, Spain

[\(Back to top\)](#)

Editorial

The Three Pillars Supporting a Regional SDI for the Americas

By Santiago Borrero, Secretary General of the Pan American Institute of Geography and History (PAIGH). Article of *GIM International* Volume 26, Number 6 (June 2012).

<http://www.gim-international.com/issues/articles/id1889->

[The Three Pillars Supporting a Regional SDI for the Americas.html](http://www.gim-international.com/issues/articles/id1889-The Three Pillars Supporting a Regional SDI for the Americas.html)



To borrow the words of a beautiful Beatles' song, it has been a "long and winding road" that has led to an SDI in the Americas. This complex journey has already taken over a decade of efforts which have been advanced, but not necessarily coordinated, by various stakeholders, from government and academia to industry and users. For years, the PAIGH has supported member states in their endeavors towards establishing national and regional SDIs since national geographic institutes in the Americas are the main producers and certifiers of the spatial data developed in each country. The SDI in the Americas is evolving at its own pace and, regardless of contributions at the supranational level, is based on the results attained by three essential pillars:

- SIRGAS – The Geocentric Reference System for the Americas. Established in 1993 in Asuncion, Paraguay, it is the regional densification of the International Terrestrial Reference Frame (ITRF). SIRGAS provides the regional SDI with the geometrical reference system that is essential for its development. SIRGAS is currently incorporating Central America and is recommended by the UN as the official reference system for all American countries <http://www.sirgas.org>
- PC-IDEA – The Permanent Committee for Geospatial Data Infrastructure of the Americas. Established in 2000 in Bogota, Colombia, at the recommendation of the United Nations Cartographic Conference for the Americas, it focuses on social, economic and environmental goals derived from the use of geospatial information. PC-IDEA



Global Spatial Data Infrastructure

Latin America and the Caribbean Newsletter

currently has a very active Working Group on Planning which is key to advancing national policy formulation, for instance, concerning open data and the implementation of growing institutional arrangements. More importantly, PC-IDEA represents the region in the context of the newly introduced United Nations Global Geospatial Information Management (UN-GGIM) initiative <http://www.cp-idea.org>

- GeoSUR – The Geospatial Network for Latin America. Established in 2007 in Brasilia, Brazil, by the Latin American Development Bank (CAF) and the PAIGH, it is a regional initiative to integrate and disseminate spatial data in Latin America and the Caribbean. GeoSUR services provide access to regional datasets and national data available in map services and data catalogues provided by more than 60 partner agencies. A key driver for GeoSUR has been the implementation of innovative applications responding to the needs of its partners and stakeholders <http://www.geosur.info>

SIRGAS, PC-IDEA and GeoSUR are therefore the three pillars supporting the construction of an SDI in the Americas. All three are in the hands of recognized regional leaders: Claudio Brunini (Argentina), Luiz Paulo Fortes (Brazil), and Eric van Praag (Venezuela). The PAIGH has been a natural partner for its creation and is interested in contributing to its development for the benefit of the SDI community in the Americas. In this way, we are helping to achieve one of our priorities: to spatially enable our diverse communities.

[\(Back to top\)](#)



Global and Regional SDI, News, Presentations



GSDI
Global Spatial Data
Infrastructure Association



GIS Training Opportunity for Latin America Applicants

Source: Harlan Onsrud

The Societal Impacts Committee of the GSDI Association will provide a free training opportunity for up to three candidates from Latin America to attend the [ICLPST](#) (International Center for Land Policy Studies and Training) training seminar on Geographical Information Systems and Land Management in Taipei. The training seminar will begin on September 12, 2012 and conclude on September 25, 2012.

Chinese Taipei is the sponsor of the training program that entrusts International Center for Land Policy Studies and Training (ICLPST) to carry out the project. Each candidate must satisfy the following guidelines:

- (a) Candidates must be an individual member of the International Geospatial Society (IGS) or must be affiliated with an organization that is a member of the GSDI Association.
- (b) Candidates must be proficient in both spoken and written English in order to be able to follow lectures and instructions conducted in this language. Nominees with basic computer skills will be considered more suitable for this course.
- (c) Candidates must be persons who are presently working as an administrator, planner or project analyst in areas such as land use and management, urban planning, land surveying, spatial data infrastructure, geographic information systems, etc.
- (d) Candidates must be under the age of 55 and must be medically certified as fit for study and travel abroad. Please see the referenced Medical Report form for the required physical check-up. Those who are taking medication for chronic diseases have to prepare sufficient medication for the duration of the stay in Chinese Taipei.



Global Spatial Data Infrastructure

Latin America and the Caribbean Newsletter

All participants should have valid passports and visas (they shall apply for a visa valid for at least a one month stay) for entry into Chinese Taipei. Please note that each participant will receive a round-trip, economy-class air ticket for travel between his/her country's capital city and Taipei by the most direct route, and will be provided with board and lodging expenses during the training seminar. The participant is fully responsible to pay for any and all other incidental expenses in connection with the travel such as visa fees, airport taxes, en-route hotel accommodations, etc.

To better facilitate discussions among the participants and with the lecturers, we require that every participant prepare a country paper about developments in their home country to be presented in class. The topic should be relevant to the theme of the course (see the curriculum). Each country-based presentation is limited to 20 minutes. A computer and projector will be provided by the Center (ICLPST) for the presentation. However, outside the presentation, participants are expected to bring and use their own laptop computers during the training seminar.

If you are interested in the training seminar, please fill in the application form found at http://memberservices.gsdi.org/files/?artifact_id=1076 and send it to Mr. Jeremy Shen, vice chair of the Societal Impacts Committee of the GSDI Association at jeremyshen0120@hotmail.com or moi0795@moi.gov.tw before **July 15, 2012**. Every application submitted will be reviewed by GSDI Association's Societal Impacts Committee and the President of the International Geospatial Society. Selections should occur within 7 to 10 days. If accepted, the candidate will need to submit the required Medical Report form (see http://memberservices.gsdi.org/files/?artifact_id=1077) within two weeks after being informed.

GeoSUR Program's Mailing List

Source: Eric van Praag by way of Santiago Borrero



Cordial invitation to join the GeoSUR Program's mailing list (www.geosur.info). It currently consists of more than 250 members, almost all of whom are geospace specialists from Latin America and the Caribbean. Eric van Praag is coordinating the list and usually sends GeoSUR Program – related mails but the list is open to any contribution in geospace fields, with special emphasis placed on SDI and geoservices. If you are interested, just email Eric van Praag / Regional Coordinator/ GeoSUR Program/ CAF – Latin American Development Bank / evanpraag@caf.com and include your full name, the name of your institution and the email address you wish to register.

Extension of deadline for receiving applications for the 2012 Award GeoSUR

Source: Eric van Praag (GeoSUR) Program and Santiago Borrero (PAIGH)

Recently the Regional Coordinator of the CAF-GeoSUR development bank in Latin America, Eric van Praag, and the Secretary General of the Institute of Geography and History, Santiago Borrero, announced that it has been extended the deadline for submitting applications for GeoSUR Award granted by both institutions. The deadline to receive nominations in the General Secretariat of PAIGH is **Friday, August 31, 2012**. Each year the award will be bestowed to two activities that stem from the relationship between participating institutions and the GeoSUR Program that stand out for their application of the available data and use of the services provided by the Program. Firstly, recognition will be given to applications of data or development of services resulting from the GeoSUR Program which are innovative for the region. A second acknowledgement will be awarded to the application or service that stands out for its relevance for complying with the objectives of the GeoSUR Program. Institutions or individuals in any country of Latin America and the Caribbean may participate. GeoSUR will announce the winners in the categories of "Innovation and Relevance" during the installation ceremony of the 5th GeoSUR Program Meeting, as part of the 45 Meeting of the Directing Council of the PAIGH that will take place on November 2012, in Buenos Aires, Argentina, thus highlighting the initiatives of institutions and active members of GeoSUR. The guidelines to apply can also be found at: http://www.ipgh.org/GeoSUR/Files/Bases_Premio-GeoSUR_vENG.pdf. Further information can be requested from premios@ipgh.org or secretariageneral@ipgh.org.



Global Spatial Data Infrastructure Latin America and the Caribbean Newsletter

[Awards to be Granted by the Pan American Institute of Geography and History](#)

Source: Santiago Borrero

Call for works and candidacies for the awards to be granted by the Pan American Institute of Geography and History on the occasion of its 85th Anniversary to be commemorated in 2013:



[The "Silvio Zavala" Colonial History of the Americas Award](#)

Within the framework of the 85th anniversary of the PAIGH and to celebrate the 103rd birthday of the illustrious historian Silvio Zavala, we hereby invite you to forward publications on the colonial history of the Americas. Works contributing to the historical knowledge of the continent will be granted the award (Deadline: Jan/18/2013).

[The "Leopoldo Zea" Thought of the Americas Award](#)

To commemorate the centennial of the birth of the notable philosopher Leopoldo Zea, we hereby call for nominations for contemporary works on the concept "Thought of the Americas" related to the independent, national or republican period that contribute to historiography research in the Americas (Deadline: Jan/18/2013).

[The "Carlos A. Carvallo Yáñez" Award](#)

Original works on the **Cartography** field will be granted. Elements to be considered: clarity and current significance of the concepts expounded, methodological and technological development, plausibility of implementation or use in the Member States of the PAIGH regardless of brands, equipment or software (Deadline: Jun/28/2013).

[The "Arch C. Gerlach" Award](#)

The jury grants this award to the work considered to have the greatest value and significance for the development of **Geography of the Americas** and that constitutes a relevant contribution to scientific development, the subject matter notwithstanding, provided it deals with disciplines encompassed by the Commission on Geography (Deadline: Jun/28/2013).

[The "Luiz Muniz Barreto" Award](#)

Granted by the Commission on Geophysics to the work that contributes to scientific development and that adds the most value and importance to the development of **Geophysics of the Americas** and related sciences (Deadline: Jun/28/2013).

[The "Wallace W. Atwood" Award](#)

Authors under 35 may be awarded by unpublished works in any the PAIGH four basic fields of: **Cartography, Geography, History, Geophysics and related sciences**. Works submitted for masters or higher degrees may be submitted (Deadline: Jan/18/2013).

[The PAIGH Pan American Medal](#)

Awarded to the scientist of a Member State of the PAIGH who stands out for his/her career in any of the fields of interest of the Institute: **Cartography, Geography, History and Geophysics**. Medals may be granted for each of the four Commissions (Deadline: Aug/30/2013).

The complete bases for each Award can be found at: <http://www.ipgh.org>. For additional information please write to: premios@ipgh.org where we will gladly help you.

Global Spatial Data Infrastructure

Latin America and the Caribbean Newsletter

GAEZ

Source: Sergio Acosta y Lara

GAEZ is a huge geospatial database (the largest geospatial database put by FAO online ever) that you can find very useful. You may access the GAEZ data portal at <http://gaez.fao.org/Main.html>.



[AD-SDI Program Emerging as Global Geospatial Information Infrastructure Role Model](#)

Source: Arturo Brun-Martinez



The Abu Dhabi Spatial Data Infrastructure (AD-SDI) Program is a geospatial information infrastructure that shares tools and methods for enhancing planning, decision-making and operations among government agencies and other stakeholders. It is administered within ADSCI's e-Government program, a critical component of the government services optimization strategy included in Abu Dhabi's Economic Vision 2030. AD-SDI currently includes over 50 actively participating organizations.

The Abu Dhabi Systems and Information Centre (ADSIC) is a government entity created in 2005 to modernize and optimize government operations - one of four key priority areas under Abu Dhabi's socio-economic vision towards 2030. Aside from the AD-SDI Program, its other major initiatives include the Abu Dhabi e-Government Program, the Jobs Abu Dhabi (JAD) online portal, and the Abu Dhabi Government Contact Centre.

The ADSIC was formed in 2005 by the Abu Dhabi Government under the leadership of His Highness Sheikh Mohammed bin Zayed Al Nahyan, Crown Prince of Abu Dhabi, Deputy Supreme Commander of the UAE Armed Forces and Chairman of the Abu Dhabi Executive Council. It is the governmental party overseeing the IT agenda of Abu Dhabi. ADSIC's mission is to enable the modernization of government services through Information Technology, using multiple delivery channels. It envisions a high-performance government delivering world-class services. ADSIC uplifts the goal of government modernization at large, which focuses on Performance Improvement, Process Simplification, and Use of IT. For more information, please contact: Rani Saddi, PR and Communications Manager, Abu Dhabi Systems and Information Centre pr@adsic.abudhabi.ae Web site: www.abudhabi.ae



The Fifth International Conference on Advanced Geographic Information Systems, Applications, and Services
GEOProcessing 2013
February 24 - March 1, 2013 - Nice, France
<http://www.iaia.org/conferences2013/GEOProcessing13.html>

www.iaia.org

GEOProcessing 2013, the Fifth International Conference on Advanced Geographic Information Systems, Applications, and Services

Source: GEOProcessing 2013 by way of Santiago Borrero

It will take place from February 24 to March 1, 2013 in Nice, France. Submission deadline: **September 29, 2012**

General page: <http://www.iaia.org/conferences2013/GEOProcessing13.html>

Call for Papers: <http://www.iaia.org/conferences2013/CfPGEOProcessing13.html>

Submission page: <http://www.iaia.org/conferences2013/SubmitGEOProcessing13.html>

Extended versions of selected papers will be published in *IARIA Journals*: <http://www.iaiajournals.org>. Print proceedings will be available via Curran Associates, Inc.: <http://www.proceedings.com/9769.html>. Articles will be archived in the free access ThinkMind Digital Library: <http://www.thinkmind.org>. Please note the Poster and Work in Progress options. The topics suggested by the conference can be discussed in term of concepts, state of the art, research, standards, implementations, running experiments, applications, and industrial case studies. Authors are invited to submit complete unpublished papers, which are not under review in any other conference or journal in the following, but not limited to, topic areas. All tracks are



Global Spatial Data Infrastructure

Latin America and the Caribbean Newsletter

open to both research and industry contributions, in terms of Regular papers, Posters, Work in progress, Technical/marketing/business presentations, Demos, Tutorials, and Panels. Before submission, please check and conform with the Editorial rules: <http://www.iaria.org/editorialrules.html>

GEOProcessing 2013 Topics (topics and submission details: see CfP on the site)

Geo-spatial Fundamentals

Fundamentals of geo-information; New trends in GIS technologies and research; Techniques for geographical representation; Integrated architectures for geo-spatial information; Geo-spatial data in net-centric environment; Geo-spatial technology; Discovery, indexing and integration of geographical information systems; Geo-processing of distributed data; Geo-information processing; Use of computational geometry for GIS problems; Virtual globes and their application to scientific research; Spatial decision support systems.

Geo-spatial Web Services

Geo-spatial Web Services and applications; Geo-spatial Web Services and simulation and modeling; Geo-spatial Web Services and sensors; Geo-spatial Web Services and interoperability; Geo-spatial Web Services and processing; Geo-spatial Web Services and spatial analysis; Geo-spatial Web Services and society; Geo-spatial Web Services and information retrieval; Geo-spatial Web Services and human computer interaction; Geo-spatial Web Services and mobility.

GIS

Wireless and mobile GIS; Integration of remote sensing, GIS and GPS; Statistics and application models of spatial data; GIS for the environment and health; Satellite positioning technology and LBS; Urban GIS and its applications; Theories and algorithms in GIS; Government and public GIS.

Geo-spatial sMulation and Visualization

2D and 3D information visualization; Distributed simulations and sensor webs; Simulation modeling dynamic geo processes; Exploratory spatial data analysis; Fine-grained, terrestrial monitoring platforms; Geo-visualization and geo-visual analytics; Visualization of geospatial uncertainty; Representation and visualization of geospatial data.

Geo-modeling

Standards and geo-spatial metadata; Novel geo-spatial data processing and management mechanisms; Spatio-temporal data modeling and reasoning; 3D modeling and GIS; Modeling and analysis of terrains; Modeling uncertainty in geo-spatial information; Spatial and Spatio-temporal statistics; Geo-spatial and Spatio-temporal data mining; Virtual modeling of large geographic areas; Time-geography modeling.

Digital Cartography Data

Digital geographical libraries; Exploratory cartography and interfaces; Digital cartography; Automated mapping and map generalization; Cartographic theory and applications; Data models in cartography; Geographical search engines.

Earth Geo-observation

The global environment and climate change; Data systems for the future Earth observation satellites; Calibration and validation of remotely sensed data; Earth observation sensor networks and applications; Earth observation technology and systems.

Geo-sensing

Acquisition and processing of remotely sensed data; Information extraction from remotely sensed data; Data mining across sensor; Intelligent sensors/sensor fusion; Co-operative sensing and organization; Sensor information management systems; Spatio-temporal sensor data mining; Sensor networks and interaction with actuators; Geo-sensor specialized networks (e.g. disaster management, early warning systems, environmental monitoring).

Specific Geo-data Processing

Seismic data processing (stacking, migration, post-processing, interpretation); Tomography (algorithms, methods); Electromagnetic sounding; Near surface methods (archaeology, urban and environmental planning); Combined geophysical methods (gravimetry, magnetic, borehole methods); Seismology and Planetology; Geo-natural data on phenomena (hurricane, winds, flooding, etc.); Underground geo-reserves, natural resources, exploration (gas, oil, metals, etc.); Natural geo-evolution and morphology (glaciers, oceanic streams, etc.); Geo-marine life; Geology and earth system simulation and modeling.



Global Spatial Data Infrastructure

Latin America and the Caribbean Newsletter

Geo-spatial Domain Applications

Geospatial Technologies for Disaster Management; Geology and hydrogeology geographical data; Standardization of geodata and geoservices; Environment and land surveying; Oceanographic geo-information; Natural resource information systems; Remote sensing geospatial data collection; Geo-spatial data and vehicular technologies; Geology and Hydrology applications; Location-based services; Environmental monitoring; Special applications: 3D cadastre, traffic management, etc.

Managing Geo-spatial Data

Managing uncertainty in spatial information; Automatic mapping (possibly web-based); Digital elevation/shape modeling; Web-based visualization of statistical data within a geographic framework; Tools and links between GIS and statistical software packages; Business mapping (spatial analysis for business processes as customer segmentation, churn analysis, etc.); Wireless sensor networks for spatial applications; Errors and their measurement in spatial data.

Committee will soon be announced.

[\(Back to top\)](#)



IGS News, Links, Publications

The International Geospatial Society: A Young Initiative

Source: *GIM International*, Volume 26, Number 6 (June 2012)

Mabel Álvarez, President of the International Geospatial Society



International
Geospatial Society



The International Geospatial Society (IGS) is the individual membership arm of the GSDI Association. While only geospatial organisations may join the GSDI, the IGS permits individuals not attached to such organisations to become more fully engaged with peers from around the world. The IGS enhances communications globally among individuals who are actively involved in promoting, developing or advancing spatial data infrastructure and related concepts.

A Brief History

The International Geospatial Society initiative began in June 2009 during the GSDI 11 World Conference which was held in Rotterdam, The Netherlands. Through the GSDI Association; processes were developed for the election of the first IGS president and vice-president, each for a two-year term. This election was held electronically in the first half of 2010. Members Mabel Alvarez, Argentina, and Lilia Patricia Arias of Colombia were elected as President and Vice President of the IGS, respectively, for a period of two years. Both now become members of the GSDI Association and the President sits on the Board of GSDI.

Open List of SDI and GIS-related Theses

In recent years, many university graduates have completed a master's or PhD thesis on Spatial Data Infrastructure (SDI), GIS and related topics. However, these documents are spread across many different locations which often makes them difficult to find. Because many IGS members are affiliated with universities and research centres, a collaborative project was launched to compile a list of such postgraduate theses produced from the year 2000 onwards. The entry for each thesis includes a complete citation (incorporating the author's name, title, institution and date), an abstract and, if applicable, a link to the openly available, full-text version of the document online. All entries were uploaded into the GIKNet document archive (<http://giknet.org/depot>) as an open access document prior to the IGS meeting that was held in May 2012 as part of the GSDI 13 Conference in Quebec City, Canada. <http://gsdi.org/gsd13>.

Global Spatial Data Infrastructure

Latin America and the Caribbean Newsletter

IGS Members Highlighted in the GSDI and IGS Global News

Members of both the GSDI Association and the International Geospatial Society receive the GSDI's bi-monthly GSDI and IGS Global News publication, which is edited by Roger Longhorn, vice-chair of communications of the GSDI Outreach and Membership Committee. A new, regular section has been added to each issue of GSDI and IGS Global News to present IGS members. In the March/April issue, the column entitled "IGS Member of the Month" contained profiles of two IGS members. This initiative has been very well received by IGS members, who have been invited to submit their profiles for sharing with the community. More Information About the IGS and information about the GSDI Association can be found at www.gsd.org. A short flyer outlining the benefits of International Geospatial Society membership is available in English at <http://bit.ly/Lc7pSL> and in Spanish at <http://bit.ly/KPCNXU>

President of the International Geospatial Society Receives Recognition from Provincial Government of Chubut, Argentina

Source: <http://organismos.chubut.gov.ar/>

On Wednesday May 9th, during an event where some items were delivered to rural communities, it was the setting for a recognition to Mabel Alvarez, who holds office in the Secretariat for Municipal Affairs and is current President of the International Geospatial Society (IGS). Mabel Alvarez has directed and/or participated in many projects inherent to geospatial information with support of international institutions. She was also a hard worker for several years, from its role as the highest authority of the Federal Registration of Argentina, for the achievement of the National Cadastral Law No. 26,209 where she promoted the inclusion of articles on Spatial Data Infrastructure. In Chubut, she fostered the creation of the Territorial Information System, involving 29 institutions. She is the editor of the *IDE Newsletter (Spatial Data Infrastructure Ibero America)*, a monthly online publication with wide distribution in the world that has been published since 2005; and speaker at countless conferences around the world, recognized for his tireless work in the field of geospatial information for the value these currently has both for government and society. The Homeland Minister, Javier Touriñan, in his address made a recognition "to the academic, scientific and technological work carried out by our co-workers, who are our neighbors are our co-provincials" while rescuing that she is the "sole career director of the provincial government who has made an administrative career by her own merits, made on the basis of academic concepts that today has situated her in the world's foreground where more than 50 countries are participating: We have the pride that this Presidency is exerted by our co-provincial."



[\(Back to top\)](#)

National SDI, News, Links, Presentations

ARGENTINA

[New IDESF Design and Node](#)

Source: <http://www.idesf.santafe.gov.ar/>



Gateway to the Santa Fe Spatial Data Infrastructure has improved its design which can be viewed at: <http://www.idesf.santafe.gov.ar/idesf/>. Likewise, it has implemented a WMS node for Cadastre and Territorial Information Service (SCIT, the first at IDESF), in which all layers produced by the SCIT, may be accessed directly from any server, ensuring layer display and download in its latest version. Layers prior to the implementation of this WMS node are grouped under the title "History" of each "Layers Download" section. New hydrographic and cadastral layers are now available for download.

Global Spatial Data Infrastructure

Latin America and the Caribbean Newsletter

BOLIVIA

[Coordination Meetings at the Department of Cochabamba](#)

Source: <http://www.geo.gob.bo/>



In June 2012, the Spatial Data Infrastructure project of the Plurinational State of Bolivia (in Spanish IDE-EPB, GEOBOLIVIA), in the frame on its activities participated in a series of meetings at the Department of Cochabamba, which included meetings with Research and Remote Sensing Services (in Spanish CISTEL), the Faculty of Agronomy of the Universidad Mayor de San Simon, Center for Aerospace Survey and GIS for Sustainable Development of Natural Resources (in Spanish CLAS), and with the Regional Catholic University of Bolivia in Cochabamba. The purpose of these meetings was to explain the progress and to coordinate the overall presentation of the SDI-EPB at

Departmental levels; these activities are to be undertaken in all other departments in the country.

CHILE

[Seminar on Spatial Data Infrastructure on Chile \(Chile IDE\)](#)

Source: <http://www.snit.cl/>

This seminar organized by the Executive Secretariat of the National Territorial Information System-Coordination (in Spanish SNIT), aimed at presenting geospatial information services' management / access experiences and good practices at national and international levels. This activity took place on Thursday June 28th and aired live also.



COLOMBIA

[IGAC is new OGC member](#)

Source: <http://www.icde.org.co>



On June 5th, 2012, the Geographic Institute "Agustin Codazzi" (in Spanish IGAC), as the Colombian Spatial Data Infrastructure (in Spanish ICDE) coordinator, and aware of the importance of participating in the construction of standards and technical guidelines to ensure geographic information interoperability, was officially registered as member of the Open Geospatial Consortium (OGC). Becoming member of the OGC is important both for the IGAC and the ICDE, because this supports participation in research processes, and the development of related geospatial technology topics, thus encouraging the advancement of new processes framed in the context of interoperability. This also backs the ICDE guidelines for using standards, and the promotion of exchange and access to geographic information, linked to standards set by the Government Online Program (in Spanish GEL).

[Noti-IDECA](#)

Source: <http://www.ideca.gov.co>



This is one strategy of the Spatial Data Infrastructure of the Capital District (IDECA) to develop a mechanism for diffusing progresses by way of a digital publication, which is distributed since September 2011 to all government and utility organizations in the Capital District. Noti-IDECA is a channel through which to broadcast actions taken by the infrastructure related to spatial information management and best-practices, and to report on projects across agencies that work for the benefit of the City. Publication archives may be found at: <http://www.ideca.gov.co/index.php?q=es/content/noticias>.

Global Spatial Data Infrastructure

Latin America and the Caribbean Newsletter

[IDESC - Spatial Data Infrastructure, Santiago de Cali](#)

Source: <http://www.cali.gov.co>

The Spatial Data Infrastructure of Santiago de Cali (in Spanish IDESC), is an effort by the municipal government, which seeks the efficient management of the municipality's geographic information. Some of IDESC Geoservices are provided by information layers displayed through the [GeoVisor IDESC](#), which was developed with open source technologies and OGC standards. However, it is important to note that IDESC is not only comprised by the GeoVisor; it also consists of Policies, Standards, Institutions, Geospatial Information, Products and Services. Currently, the following working groups are part of IDESC: (i) Information Policy:

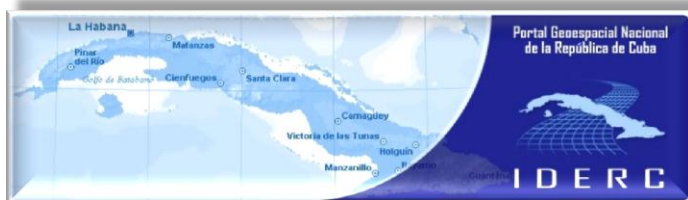
<http://groups.google.com.co/group/politicas-idesc>. (ii) Geo-data: <http://groups.google.com.co/group/geodatos-idesc>. and (iii) Geoservices: <http://groups.google.com.co/group/geoservicios-idesc>.



CUBA

[Available Web Site of the National Geographic Names](#)

Source: <http://www.iderc.co.cu>



The National Commission on Geographical Names (in Spanish CNNG) was created on May 15th, 1980 by Decree No. 67. The current legal basis for the geographical names standardization is the Decree No.150 released on May 18th, 1989, with amendments approved by Decree No. 263 of May 14th, 1999, both of which regulate everything related to standardization of geographical names in Cuba. The National Geographic

Names Committee is a permanent interagency entity, subordinated to the Ministry Council which represents about twenty different agencies on the cultural, educational and economic spheres which are somehow linked to national toponym studies. This Commission has the role of creating, maintaining and controlling the standardization of the country's place names and how foreign names should be named in Cuba. To carry out its work the CNNG must face and solve problems related to geographical names which are of great national and international importance.

GUATEMALA

[New Video from Guatemalan SDI](#)

Source: <http://www.segeplan.gob.gt>



The Spatial Data Infrastructure portal of Guatemala now includes a video on how to use the resources of this Infrastructure. You may watch the video by [clicking here](#).

Global Spatial Data Infrastructure

Latin America and the Caribbean Newsletter

URUGUAY

[Advancement in IDEUy](#)

Source: <http://www.agesic.gub.uy>



The Uruguayan Spatial Data Infrastructure (in Spanish IDE-Uruguay) is an Executive Branch initiative, having its formal origins on 1991 with Decree 678/91 that creates the "Cartographic Coordination Group". With this early vision, and consequent establishment of working groups, up to institutionalization of this initiative, it was sought to rationalize and agree on spatial information management from an institutional perspective. For its holistic vision, IDE-Uruguay primarily seeks to promote sustainable development, providing for better and more efficient tools for decision making. In this sense, the IDE-Uruguay aims to become an essential planning element for all government levels. Currently, IDE-Uruguay design is being advanced at the Agency for Electronic Government and Information Society (in Spanish AGESIC) through specific work teams: the Honorary Advisory Board of Geographic Information Systems (in Spanish CAHSIG - created by law) and the SDI Working Group (in Spanish GTIDE - created by resolution of the AGESIC Board). The GeoPortal development is ongoing by implementing geographic information web services aimed at helping stakeholders' access and use. IDE-Uruguay will have a decentralized structure that allows spatial information maintenance on the part of producer organizations. Works accepted for publication at [the First Uruguayan Congress of Spatial Data Infrastructure \(SDI\)](#) are also available, as well as the [geographic viewer](#).

[\(Back to top\)](#)

Articles and Publications of the Month

[The GIS Guide to Public Domain Data](#)

Source: Arturo Brun-Martínez

The GIS Guide to Public Domain Data gives users of Geographic Information Systems (GIS) relevant information about the sources and quality of available public domain spatial data. Readers will understand how to find, evaluate, and analyze data to solve location-based problems. This guide covers practical issues such as copyrights, cloud computing, online data portals, volunteered geographic information, and international data. Supplementary exercises are available online to help put the concepts into practice. Students, researchers, and professionals will find The GIS Guide to Public Domain Data a useful desk companion to help them navigate the world of spatial data in the public domain.



Publication: Governance Success in the Caribbean

Source: EU Overseas Forum



The governments of small countries deliver excellent results when they involve as many local players as possible, including opponents. Scott Douglas from the University of Oxford concludes this on the basis of his research into governance success stories on Aruba, Curacao, and St. Kitts. More information about the research can be found at http://www.berenschot.com/about_berenschot/news_agenda/?ActImltdt=23302 "Great Governance in Small Societies: Effective public sector practices in small-scale democracies" by Scott Douglas (Utrecht, 10-01-2012, ISBN 978-94-90314-11-8 T)

[\(Back to top\)](#)



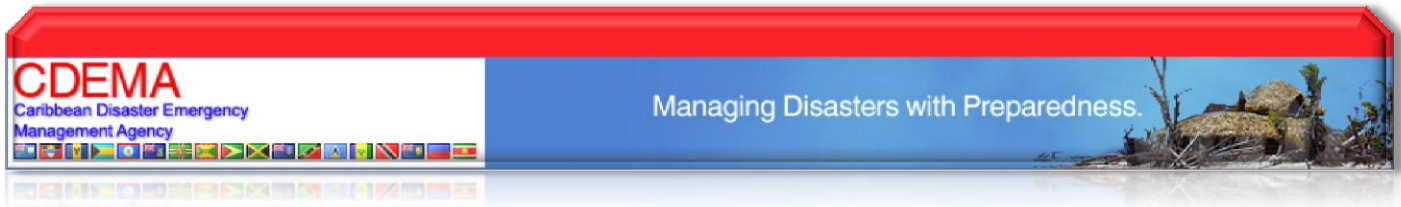
Global Spatial Data Infrastructure

Latin America and the Caribbean Newsletter

Geospatial Research,
Applications, Software, Data

[Flood Risk Reduction System Developed For Communities](#)

Source: NEMO News



The member states of the Caribbean Disaster Emergency Management Agency ([CDEMA](#)) now have a model flood risk reduction system which can contribute to protecting the lives and property of people at the community level. The system has been developed under the Caribbean Disaster Management Project Phase 2 (CADM2). In Saint Lucia CADM2 was implemented with the Gros Islet Disaster Committee in Corinth. Saint Lucia recently attended the final series of meetings in Barbados and was represented by Jennifer Auguste of the Gros Islet Disaster Committee and Fitzgerald John of the Water Resources Management Agency. The CADM2 was implemented from January 2009 to June 2012 by the CDEMA Coordinating Unit (CU), in collaboration with the Caribbean Institute of Meteorology and Hydrology (CIMH), the University of the West Indies, the University of Guyana and the respective government of the Belize, Dominica, Grenada, Guyana and Saint Lucia in which pilot projects were undertaken. Financial and technical support for implementation was provided by the Japan International Cooperation Agency (JICA). Phase one the project (2002-2004) introduced a community-based flood disaster risk reduction model by the integrating of community-based disaster management planning, flood early warning system and flood hazard mapping. This community-based disaster risk reduction model has been further developed by CADM2 and to date has been implemented in five communities of the pilot states. Stakeholders reviewed the project results at a seminar on June 5, 2012 and during the Joint Coordination Committee meeting on June 6, 2012. Both meetings took place at Barbados. This was followed by the signing and handing over of the report to the CDEMA Coordinating Unit on Thursday, June 7, at the CDEMA headquarters in Manor Lodge, Barbados. Saint Lucia, the Community of Corinth with the CDEMA system expresses its appreciation to the Government and People of Japan and JICA for assisting the Caribbean Community to establish the flood disaster risk reduction system and encourages the CDEMA member states to extend the new system in partnership with development partners, including private and civil sectors.

[Regional Landslide Risk Prediction Tool Developed for Mesoamerica](#)

Source: CATHALAC



The Water Center for the Humid Tropics of Latin America and the Caribbean (in Spanish CATHALAC) has recently developed an automated, online tool for predicting landslide hazards in Mesoamerica, a first of its kind effort at the regional level. "The tool will provide early warning for landslide events in Mesoamerica, potentially minimizing the loss of life and property," commented Emilio Sempris, CATHALAC's Director. Mesoamerica is highly vulnerable to extreme meteorological events, and to the flooding, and landslides that such events trigger.

[Decision-makers in Mesoamerica can now count on this first of its kind tool for predicting landslide hazards](#)

The hazard prediction uses the Mora-Vahrson methodology to determine landslide hazards at the level of detail of 1 square km. Updating itself each day, the tool indicates the potential for landslide hazards over each 24 hour window into the future, grading such potential into "very low," "low," "medium," "moderate," "high," and "very high." The

Global Spatial Data Infrastructure

Latin America and the Caribbean Newsletter

complex modeling behind the landslide hazard prediction uses a combination of data on lithology, soil moisture, and topographic slope, along with the rainfall forecasts that CATHALAC generates daily using the PSU/NCAR mesoscale model, MM5. Following the initial implementation phase, CATHALAC will be adding enhanced functionality to the tool. The tool was also based on a prototype developed earlier, in late 2010 for Honduras and Nicaragua, in the context of the Mesoamerican Regional Visualization and Monitoring System (SERVIR, see <http://www.servir.net>), jointly implemented with the U.S. Agency for International Development (USAID), NASA, and other partners. CATHALAC's development of the tool follows on the footsteps of the Center's involvement in climatologic, environmental, and geo-physical modeling over the past decade and dovetails with CATHALAC's mission of promoting sustainable development in Latin America and the Caribbean through applied research and development, education, and technology transfer. In addition to implementing SERVIR in Mesoamerica since 2005, CATHALAC has also served since 2010 as a Regional Support Office (RSO) of the United Nations Platform for Space-based Information for Disaster and Emergency Response (UN-SPIDER). Under the mandate of the 2009 Presidential Summit of the Tuxla Mechanism, the Center has also been implementing the Mesoamerican Territorial Information System (in Spanish SMIT) platform for disaster risk reduction, in the context of the Project Mesoamerica initiative. The landslide hazard modeling depends heavily on earth observation data, and CATHALAC has likewise served as a participating organization in the inter-governmental Group on Earth Observations (GEO) since 2007. For more information about CATHALAC, please visit <http://www.cathalac.org>. The landslide hazard prediction tool can be accessed through CATHALAC's Geo-Viewer at: <http://portalgis.cathalac.org/cathalac/maps/> (under the "Actualidad" menu item). A version for Google Earth is also available via: http://portalgis.cathalac.org/cathalac/maps/Amenaza_deslizamientos.kmz (which can also be downloaded from the Geo-Viewer).

[New policy brief on gauging climate impacts on Andean mountain hydrology](#)

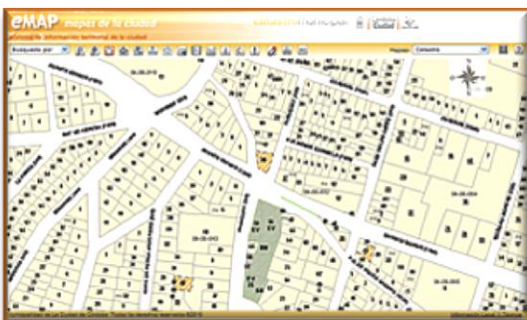
Source: <http://sei-international.org>

New [Spanish-language policy brief](#) have published summarizing and updating a major World Bank report on a project to develop a methodology to evaluate climate change impacts on mountain hydrology through a case study in the Peruvian Andes. Climate change is expected to accelerate the retreat of tropical glaciers in the Andes, affect precipitation patterns, and increase climate variability and extreme weather events. All this will affect water resources, with important implications for Peru, which depends on hydropower for more than half its electricity, and on discharges from upper basins for its urban water supply and for agricultural irrigation.

Assessing the net impacts of climate change on Peru's mountain hydrology –or on any similar system– requires a complex, multi-level analysis. Our methodology combines a climate analysis to define future climate scenarios; a mountain hydrology analysis to incorporate the dynamic behavior of glaciers; and the application of the methodology at a watershed level. While the results are specific to the river basins examined, the methodology could be widely applied across Peru and elsewhere. Learn more and download the policy brief: [Evaluación de los impactos del cambio climático en la hidrología de montaña: Desarrollo de una metodología a través de un estudio de caso en los Andes del Perú](#), or read the [original report](#) (in English).



[City of Córdoba, Argentina, Modernizes Its Land Registry Administration](#)



Source: <http://www.esri.com/news/>

Founded in 1573, Córdoba is the second-largest city in Argentina and is home to 1.3 million people. In December 2005, a project was begun to systematize the management of cartographic information with a view toward complete modernization of the Local Land Registry. This project had the financial support of the Inter-American Development Bank (IDB). Activities included supplying computers, printers, plotters, and GIS software (ArcSDE and ArcIMS) and consulting services for the implementation of specific work and training. The project focused on incorporating the great amount of existing graphic data and

Global Spatial Data Infrastructure

Latin America and the Caribbean Newsletter

implementing it in an environment based on GIS technology, working with a single database on which data maintenance, cartographic printing, consultation, and land administration will run simultaneously. Database design was guided by the directives of Catastro 2014 (FIG, 1998) and, in conjunction with a participatory process, helped staff achieve a solid database with current and future needs identified. One of the main products developed in the second stage was eMAP, a powerful web system of territorial information management based on ArcGIS for Server. Read more [here](#).

[Paraguay: SEAM and DISERGEMIL Formalized Activities Through an Agreement](#)

Source: Kate Lance; <http://www.seam.gov.py>

Head of the Secretariat of Environment (in Spanish [SEAM](#)), Oscar Rivas, and the Director of the Military Geographic Service (in Spanish [DISERGEMIL](#)) Colonel Arnulio Caceres, signed an institutional cooperation agreement by which previous joint activities were formalized between both institutions on information and service exchange for geospatial information management.

Activities include training and technical support service, cartographic authorization for thematic maps, publication and promotion of national topographic maps. Through the mentioned agreement, SEAM is committed to working with the installation and configuration of Web Map Service for DISERGEMIL employees, to participate in the creation of a digital archive of thematic and topographic maps, and to foster digital geographic information exchange. DISERGEMIL is committed to updating national topographic maps, and to produce them in digital format, and to promote digital geographic information exchange.



New version of CatMDEdit

Source: F. Javier Zarazaga-Soria



Release of CatMDEdit (4.6.6 version) metadata editor under Open Source (GNU Lesser General Public) license. This application is an initiative of the National Geographic Institute of Spain (in Spanish IGN), which is the result of the scientific and technical collaboration between IGN and the Advanced Information Systems Group (IAAA) of the University of Zaragoza with the technical support of GeoSpatiumLab (GSL). CatMDEdit is a metadata edition tool that facilitates documentation of resources, with special focus on description of geographic information resources. The main new feature that this new version includes is a conversion gateway between MARC21 and ISO19115 standards. This conversion gateway is the result of the research carried out in the GTI PC-IDEE (Interdisciplinary Working Group on Cartographic Heritage in the SDI) in the context of the Spanish SDI Working Group (<http://www.idee.es/en/web/guest/subgrupos-de-trabajo>). The technical specifications of this work can be obtained at http://metadatos.ign.es/metadatos/Patrimonio_cartografico. In addition to that, new adaptations have been added to this version in order to guarantee the INSPIRE Implementation Rules compliance. CatMDEdit can be downloaded from: <http://catmdedit.sourceforge.net/>; <http://joinup.ec.europa.eu/software/catmdedit/description>

[\(Back to top\)](#)

Global Spatial Data Infrastructure

Latin America and the Caribbean Newsletter

Training and Funding Opportunities, Awards

1st Edition Master in Geographic Information Quality-Evaluation and Management

Source: Joaquin Segura Martin by way of Santiago Borrero



The course will be taught during the 2012/2013 academic year at the University of Jaén, Spain: Diploma in Geographic Information Quality Management. Detailed information may be found at the address: <http://www.cartocalidad.com/es.html>. The course is designed in content and form, at the request of many users, and its provision is fully developed virtually based on the University of Jaén platform "ILIAS virtual campus."

FIG Foundation Grant and Scholarship

Source: FIG e-Newsletter May/June 2012

The FIG Foundation will be providing research grants of up to 20,000 EUR spread over two years as well as scholarships of up to 4,000 euros to PhD students. Deadline for Academic Research Grant: **30 July 2012**; Deadline for Scholarships: **1 November 2012**. <http://www.fig.net/figfoundation/index.htm>

Capacity Building in UN-SPIDER

Source: UN-SPIDER Newsletter, May 2012, Vol.1/12

In the context of UN-SPIDER, Capacity Building is defined as "the process to facilitate the strengthening of the capacity of individuals and institutions related to the use of space-based information to prevent, to mitigate, and to react effectively to the challenges posed by natural hazards and humanitarian crises." The main target groups include governmental disaster-risk management and emergency response agencies, researcher agencies, regional and international organizations. UN-SPIDER Capacity Building efforts include four complementary types of activities:

- Providing policy-relevant advice to institutions and governments regarding the use of space-based (spatial) information to support the full disaster management cycle;
- Facilitating access to space-based data and services;
- Facilitating the training of individuals on access to and use of such data;
- Facilitating access to infrastructure, hardware, and software, and services for spacebased applications.

In its role as a facilitator, UN-SPIDER has established and continually updates three databases focusing on training opportunities offered by a variety of institutions worldwide, whether e-learning courses, short term courses or academic programmes leading to degrees. These databases are accessible through the UN-SPIDER Knowledge Portal. The Knowledge Portal also serves as a host to the curricula which UN-SPIDER is developing, for example "Remote Sensing for Emergency Response". <http://www.un-spider.org/capacity-building-guides/training-opportunities>

[\(Back to top\)](#)

Employment Opportunities

Opportunities in BVI

Source: NEMO News

Vacant Post of Deputy Director: The Government of the Virgin Islands invites qualified and professional applicants to apply for the post of Deputy Director, Department of Disaster Management - http://www.hr.gov.vg/emp_opport_1.asp?idVacancy=1186

Global Spatial Data Infrastructure

Latin America and the Caribbean Newsletter

Consultancy - Terms of Reference for Planning Regulations: The objective of the consultancy is to reduce the vulnerabilities associated with climatic events on the Virgin Islands environment, through the development and subsequent application of Planning Regulations. - <http://www.bviddm.com/document-center/TERMS%20OF%20REFERENCE%20Planning%20Regulations%20-%20TCP%20Rev%20May%202012.pdf>

Post-doctoral Fellowship on GIS and Data Visualization Research in Small-Scale Fisheries

Source: Ellen Hines

Location: Department of Geography, Memorial University of Newfoundland, St. John's (NL), Canada. Appointment: 2 years, full-time, starting September 2012. Job description: The "Too Big to Ignore: Global Partnership for Small-Scale Fisheries Research" (www.toobigtoignore.net) is a new 6-year project, funded by the Social Sciences and



Too BIG To IGNORE

Global Partnership for Small-Scale Fisheries Research

and Humanities Research Council of Canada, and involves 62 scientists and 15 organizations from around the world. The aim of the partnership is to conduct research, foster policy dialogue and build capacity for small-scale fisheries, in order to elevate their profile, highlight their importance, and promote their sustainability. For the first phase of the project, seeking a post-doctoral fellow (PDF) who will be able to contribute to the development of a web-based, interactive information system on small-scale fisheries, and to conduct research on data visualization, as well as to help perform global analysis to assess the importance of this sector. The PDF will liaise with the researchers, partners and the information system manager in populating the database. Finally, he/she is expected to help with some aspects of project management, including preparing of reports. Applicants should send the following information by e-mail to toobigtoignore@mun.ca, with subject line: PDF application. Deadline: **August 1st, 2012**.

[\(Back to top\)](#)

Other

News Out of Rio+20: Six Heads of State Commit to Invest in Nature

Source: Jessica Robbins

Antigua and Barbuda has committed to protecting 20 percent of their near shore marine area and 15 percent of their terrestrial area by 2020, thereby formally joining the Caribbean Challenge Initiative. The country has also committed to creating the Antigua and Barbuda Conservation and Climate Adaptation Trust (ABCCAT) and developing sustainable finance mechanisms such as user fees and debt-for-climate adaptation swaps to provide a sustainable source of funding to protect marine and coastal resources and adaptation to climate change. Grenada's Prime Minister, Tillman Thomas, announced that he will co-host a Caribbean Political and Business Leaders Summit with Sir Richard Branson of the Virgin Group, along with Premiere Orlando Smith of the British Virgin Islands in 2013. The Summit will build and expand on the Caribbean Challenge Initiative commitments of placing 20 percent of near shore marine area under protection by 2020 and developing sustainable mechanisms to finance the management of protected areas.

[IDB, ECLAC Assess Costs of Climate Change Damages in LAC5](#)

Source: <http://larc.iisd.org/>



**Latin America & Caribbean
Regional Coverage**

A Knowledgebase of International Sustainable
Development Activities in Latin America & Caribbean

iisd

International
Institute for
Sustainable
Development

Institut
international du
développement
durable

The Inter-American Development Bank (IDB), together with the UN Economic Commission for Latin America and the Caribbean (ECLAC) and the World Wildlife Fund (WWF), have released a new report on the vulnerability to large economic damages resulting from climate change in Latin America and the Caribbean (LAC). The study, titled "The Climate and Development Challenge for Latin America and the Caribbean: Options for Climate Resilient Low Carbon Development," suggests that the LAC region must invest more in climate change adaptation initiatives in order to diminish the increasing threat of future economic and environmental losses. It warns that damages caused by climate change impacts, including diminishing agricultural resources, disappearing glaciers, increased flooding and droughts, and coastal damage, could cost the LAC region approximately US\$100 billion annually. The study notes that the

Global Spatial Data Infrastructure

Latin America and the Caribbean Newsletter

adaptation costs are a small fraction of the costs of physical impacts, conservatively estimated at 0.2% of GDP for the region, at current values. In addition, adaptation efforts would have significant development benefits, from enhanced water and food security to improved air quality and reduced vehicle congestion, further reducing their net costs. The study also highlights that more costly investments are necessary to cut the region's projected carbon emissions to levels consistent with global climate stabilization goals. [Publication: [The Climate and Development Challenge for Latin America and the Caribbean: Options for Climate Resilient Low Carbon Development](#)] [[IDB Press Release](#)]

[World Bank's Environmental Strategy Aims at Green, Clean and Resilient Development](#)

Source: Arturo Brun-Martinez; <http://sids-l.iisd.org/>

The World Bank has released its new Environment Strategy for 2012-2022 with the aim of supporting countries' efforts to secure a sustainable future through initiatives that are green, clean and resilient. The Strategy, titled "Toward a Green, Clean, and Resilient World for All," underlines that "Green" initiatives emphasize the sustainable management of natural resources to improve livelihoods and improve food security, through partnerships with organizations such as the Wealth Accounting and Valuation of Ecosystems Services (WAVES) and the Global Partnership for Oceans. The strategy describes "Clean" initiatives as working towards cleaner air, water and oceans through low emission development strategies, including climate-smart transport, energy, agriculture and urban development. "Resilient" projects include better preparation for shocks and natural disasters, improving risk management, and climate change adaptation policy, with a focus on vulnerable Small Island Developing States (SIDS) to reduce dependence on oil imports, build sound infrastructure, and restore protective coastal ecosystems such as mangroves. The Strategy has organized region-specific agendas to address different environmental challenges in the developing world. In Latin America and the Caribbean, the World Bank will mainly support the management of protected areas and biodiversity conservation, as well as payment for ecosystem services and "green" cities. [Publication: [Toward a Green, Clean, and Resilient World for All: The World Bank Group's Environment Strategy 2012-2022](#)]

[\(Back to top\)](#)

Americas: Conferences, SDI Events

44th Meeting of the Directing Council of the PAIGH

Source: <http://www.ipgh.org>

The National PAIGH Section in Argentina informs that the 44th Meeting of the Directing Council will be held in Buenos Aires, on November 14-16 this year. On this occasion other professional activities will take place, among them, the "Americas History Symposium" (November 12-13) and the 5th GeoSUR Meeting (November 14). For more information please visit: <http://www.ipgh.org>

The 8th FIG Regional Conference in Uruguay: Surveying towards Sustainable Development

Source: Nelma Bènia by way of Santiago Borrero



The 8th FIG Regional Conference will be held in Montevideo, Uruguay from 26 to 29 November. This event is organized by the International Federation of Surveyors (FIG) and the Association of Uruguayan Surveyors (*Asociación de Agrimensores del Uruguay*

AAU). The conference is co-sponsored by some agencies of the United Nations and the World Bank. Other international and regional partners will participate in the conference as well as FIG sister organizations from the Joint Board of Geospatial Information Societies (JB-GIS). The last day of the Conference is reserved for a joint technical tour for all participants to Colonia del Sacramento renowned for its historic quarter, a UNESCO World Heritage Site. The conference is open to participants from all over the world and the languages will be English and Spanish. This event will be held with the concept "Surveying towards Sustainable Development". Applying science and technology profession works in the construction of development which promotes the improvement of the society and the respect of the environment. In the globalized world we are in, to share knowledge, information and data through compatible coordinates systems is a necessity slowly solving and regions ought to find an official way. This important event that will bring together professionals from all continents allow professionals to discuss different topics, share updated information and learn scientific and technological advances. Conference Website: <http://www.fig.net/uruguay/>

Global Spatial Data Infrastructure

Latin America and the Caribbean Newsletter

Second Argentinean gvSIG Workingdays

"Liberating data"

Source: gvSIG News Office



The Second Argentinean gvSIG Workingdays will be held on September 7-8, 2012

[\[http://www.gvsig.org/web/community/events/jornadas-argentina/2012\]](http://www.gvsig.org/web/community/events/jornadas-argentina/2012)

in the city of Mar del Plata, Argentina under the slogan "Liberating data." The aim of this Workingdays is to further advance in the development of experiences with gvGIS and, simultaneously, to promote awareness on the importance of free philosophy projects as a first step towards the long-awaited informatics sovereignty. The period for submission of proposals and communications to the Workingdays is now opened. From now, proposals may be sent to the email address jornadas.argentina@gvsig.org, which will be valued by the scientific committee ahead of its inclusion in the program of the conference. All information on the rules for submission of communications, is found at the "communications section" at: [\[http://www.gvsig.org/web/community/events/jornadas-argentina/2012/Comunicaciones\]](http://www.gvsig.org/web/community/events/jornadas-argentina/2012/Comunicaciones). The abstract submission period will end on **July 31**. On July 2nd will open the registration period. Registration for this working days is for free.

Annual International Conference on Potential Property Tax for Municipal Revenue Mobilization

Source: Lincoln Institute Program on Latin America and the Caribbean

The Program for Latin America and the Caribbean of the Lincoln Institute of Land Policy, in collaboration with the International Property Tax Institute (IPTI) and the Royal Institution of Chartered Surveyors (RICS), is pleased to announce the Annual International Conference on Potential Tax Real Estate Property for Municipal Revenue Mobilization, co-organized by the Municipal School of Law (in portuguese ESDM), to be held on August 22-23, 2012 in São Paulo, Brazil. During the conference different points of view will be examined, relevant analysis on tax improvement potential will be presented, and discussions on inspirational experiences on systems of property taxation, including practices, decisions on tax policy and tax administration will take place. In addition, two workshops will be held on August 24th: 1) Real Estate Taxation: Comparative Legal Analysis and 2) modern systems of property valuation for taxing purposes: Models of mass evaluation and geospatial analysis. The notice is available in [Portuguese](#) and [English](#). Registration must be made through the official website of the Municipal School of Law (ESDM). Additional information at: esdm@esdm.com.br

[\(Back to top\)](#)

YEAR 2012

[Year 2012](#) [January](#) [February](#) [March](#) [April](#) [May](#) [June](#) [July](#) [August](#) [September](#) [October](#) [November](#) [December](#)
[Year 2013](#) [January](#) [February](#) [March](#) [April](#) [May](#) [June](#) [July](#) [August](#) [September](#) [October](#) [November](#) [December](#)

JULY 2012

1-3	Washington DC, USA	COM.Geo 2012 The 3rd International Conference on Computing for Geospatial Research and Application
2-3	Lima, Peru	TICAL 2012
3-5	Tegucigalpa, Honduras	15th Ibero-American Conference on Geographic Information Systems (CONFIBSIG)
4-6	Quito, Ecuador	CEPAL Special Committee on Population and Development - Ecuador 2012
NEW		
7-12	San Diego CA, USA	The Survey Summit
16-17	Memphis TN, USA	National Geodetic Survey Real-Time GNSS Networks Symposium
NEW		
16-20	New Orleans LA, USA	2012 Coordinate Metrology Systems Conference (CMS)
19-24	San Diego CA, USA	Cadastral Summit - Annual ACSM Conference
21-24	San Diego CA, USA	ESRI Education User Conference
21-24	San Diego CA, USA	ESRI Homeland Security Summit
22-24	San Diego CA, USA	ESRI Business Summit
23-27	San Diego CA, USA	ESRI International User Conference 2012
25-28	Porto Alegre, Brazil	XIII International Free Software Forum (FISL)
26-27	San Diego CA, USA	MAPublisher Training
27-31	Río de Janeiro, Brazil	3rd International Congress from Center for the Study of the Americas
NEW		

Global Spatial Data Infrastructure

Latin America and the Caribbean Newsletter

AUGUST 2012

6-9	Memphis TN, USA	URISA/NENA Addressing Conference . For more information, visits www.nena.org .
8-10	San Miguel de Tucumán, Argentina	9th Biennial Colloquium on Territorial Transformations
13-15	UN NY, USA	Footprints and uncertainty in the processes of territorial development
13-15	UN NY, USA	Second Session of the Committee of Experts on Global Geospatial Information Management
13-17	Fortaleza, Brazil	Workshop on Integrated Management of Ecosystems and Water Resources in Latin America
14-17	Rio de Janeiro, Brazil	Latin America Geospatial Forum 2 nd Annual Latin American Conference and Exhibition on Geospatial Information, Technology and Applications.
16-17	Rio de Janeiro, Brazil	Conference on Geospatial for Defense and Homeland Security: Geo-Intelligence Latin America
23-24	Porto Alegre, Brazil	Seminar "Sharing Environmental Data in Latin America"
27-31	Rio de Janeiro, Brazil	3rd International Congress from Center for the Study of the Americas

SEPTEMBER 2012

5-8	Pittsburgh, PA, USA	14th ACM International Conference on Ubiquitous Computing - UbiComp 2012
9-11	Albuquerque NM, USA	IMTA (Americas) 2012 Conference and Member Showcase
9-13	Lake Buena Vista FL, USA	National States Geographic Information Council Annual Meeting
11-14	Corvallis OR, USA	ForestSAT 2012: A Conference Promoting Science-based Applications of Remote Sensing and other Spatial Data in Forested Systems
11-14	Bogotá, Colombia	XIV Colombia 2012 ESRI User Conference
NEW		
13-14	Philadelphia PA, USA	MAPublisher Training
16-18	Columbus, OH, USA	AutoCarto 2012
NEW		
17-18	Daytona Beach FL, USA	6th Annual CFGIS Workshop
18-21	Alta Gracia, Cordoba, Argentina	Argentinean Congress of Remote Sensing 2012
18-21	Columbus OH, USA	7th International Conference on Geographic Information Science (GIScience 2012)
NEW		
19-21	Columbus OH, USA	Ohio GIS 2012
20-21	Denver CO, USA	GIS in the Rockies - 25 Years of Geospatial Collaboration
20-22	San Jose, Costa Rica	12th International Congress on Surveying, Cadastre, Geodesy and Geomatics 2012
24-28	Montevideo, Uruguay	XIX ISTRO Conference and 4th Meeting of the Uruguayan Society of Soil Science . More information: http://www.congresos-rohr.com/istro2012
24-28	Montevideo, Uruguay	4th Meeting of Latin American and Caribbean gvSIG "Growing Community"
26-28	Buenos Aires, Argentina	First Working Days of Latin American and the Caribbean Studies
27-29	Tunja, Colombia	2nd Conference on Geographic Pedagogy of the Colombian Association of Geographers (ACOGE) Geographical pedagogy challenges to the XXI century
Sep. 30 – Oct. 3	Long Beach CA, USA	Autovation 2012
Sep. 30 – Oct. 4	Portland OR, USA	URISA's Annual Conference for GIS Professionals

OCTOBER 2012

1	Houston TX, USA	Fall 2012 Meeting: New Positioning Techniques
1-3	Buenos Aires y Luján, Argentina	Geographic Information Systems 2012 Applications in planning and land management
NEW		
1-3	Bogotá, Colombia	Latin CACS/ISRM Conference
1-5	Medellín, Colombia	Latin American Conference on Informatics
1-12	Cartago, Turrialba, Costa Rica	First International Course on Using the SWAT Model as a Tool for Hydrographic Basin Management
1-4	Portland OR, USA	URISA's Annual Conference for GIS Professionals
3-5	Guadalajara, México	WODES 2012
4-5	Buenos Aires, Argentina	19th ESRI Users Latin-American Conference
4-5	Entre Ríos-Concordia, Argentina	26th Forest Working Days of Entre Rios-Concordia
NEW		
5-6	La Paz, Bolivia	International Conference on Climate Change, Water and Wetlands
8-12	Guayaquil, Ecuador	Seventh Latin American Conference on Objects and Learning Technologies
10-12	Rio de Janeiro, Brazil	8th International Conference Virtual City and Territory
NEW		

Global Spatial Data Infrastructure

Latin America and the Caribbean Newsletter

10-13	Oakland CA, USA	North American Association for Environmental Education (NAAEE) 41st Annual Conference
15-17	Dallas TX, USA	Field Service Interactive
15-19	Santiago del Estero, Argentina	14th Humboldt International Meeting – "The Deglobalization Time"
17-20	Medellín, Colombia	Americas Regional Conference IFLA 2012: Border: Landscapes Alert
NEW 18-20	Santiago, Chile	UC-ICA Latin-American Conference
NEW 23-24	Punta del Este, Uruguay	34th International Conference on Data Protection and Personal Privacy in Uruguay
23-25	Mérida, Venezuela	2nd Venezuelan Congress of Geographic Information Systems GIS (COVESIG)
NEW 23-26	Montevideo, Uruguay	V Congress ALAP 2012, Transitions in Latin America and the Caribbean. Demographic changes and social challenges and future
NEW 24-25	Santiago, Chile	2nd ESRI User Meeting Chile
NEW 24-26	Buenos Aires, Argentina	3rd International Congress and 10th Latin America and the Caribbean Symposium "The region forehead the challenges generated by the crisis and emerging paradigms in the international and regional levels. Historical analysis, economic and sociopolitical" - CEINLADI
NEW 24-26	San Francisco CA, USA	The World Congress on Engineering and Computer Science 2012
24-28	Ibagué, Colombia	6th International Course on Tools for Monitoring Carbon Abduction in Land Use Systems
Oct. 28 – Nov. 1	Tampa FL, USA	MAPPS/ASPRS 2012 Specialty Conference

NOVEMBER 2012

1-4	Vancouver BC, Canada	37th Annual Meeting of the Social Science History Association – Historical Geography and Histories of Capitalism
5-7	San Diego CA, USA	SI World 2012 - Situational Intelligence
5-9	Santiago and Temuco, Chile	Symposium "Identities in Production: Production and Identified Movements Between Indigenous Peoples and Ethnic Minorities and Race in Latin America" Further Information: Dr. Luis Fernando Angosto Fernández (luis.angosto-ferrandez@sydney.edu.au), and Dr. Sabine Kradolfer (kradolfer.sabine@gmail.com).
7-9	Cuenca, Ecuador	IEEE Latincom 2012
8-9	Atlanta GA, USA	MAPublisher Training
NEW 11-13	Bogotá - Colombia	III National Scientific Congress on Disaster Management and Administration (in Spanish CONGESAD 2012) . Operational response models.
12-16	Montego Bay, Jamaica	URISA's Caribbean GIS Conference
14-15	Bogotá, Colombia	4G Conference and Latin American Exhibition
14-16	Buenos Aires, Argentina	44th Meeting of the Directing Council PAIGH
NEW 14-16	Buenos Aires, Argentina	Second National Working Days on Research and Teaching in Geography Argentina (2nd JONIDGA) and 8th working days on Research and Extension from Geographical Research Center (8th JIECIG)
16	Santiago de Chile, Chile	Third Colloquium "Geography, Social Movements and Territory" of the 4th Seminar on Critical Geography " Gladys Armijo Zuniga," - "Social Geography and Transformative Critical Pedagogy in Action"
NEW 17-19	Berkeley, USA	Fourth International Conference on Science in Society
19-23	Cayenne, French Guiana	Symposium SELPER 2012: Earth Observation for a Green Co-developed World Contact: contact@selper2012.com
26-29	Montevideo, Uruguay	8th FIG Regional Conference
27-29	Las Vegas NV, USA	Autodesk University
Nov. 4 - Dec. 4	Buenos Aires, Argentina	FIG Commission 7th Annual Meeting

DECEMBER 2012

5	Buenos Aires, Argentina	FIG Commission 7 International Symposium
27-29	Las Vegas NV, USA	IMTA (Americas) 2012 Strategic Planning Session



Global Spatial Data Infrastructure

Latin America and the Caribbean Newsletter

YEAR 2013

[Year 2013](#) [January](#) [February](#) [March](#) [April](#) [May](#) [June](#) [July](#) [August](#) [September](#) [October](#) [November](#) [December](#)

JANUARY 2013

13-14 *NEW*	Vancouver, Canada	Ninth International Conference on Technology, Knowledge and Society
------------------------------	-------------------	---

FEBRUARY 2013

11-13	Denver CO, USA	International LIDAR Mapping Forum
--------------	----------------	---

APRIL 2013

1-5	Havana, Cuba	V Cuban Convention on Earth Sciences - Geosciences 2013
------------	--------------	---

JULY 2013

To be determined	Lima, Perú	14th Latin American Geographers Meeting (EGAL), Lima 2013, " Latin American Regional Knowledge Gathering "
-------------------------	------------	---

[\(Back to top\)](#)

Please mention SDI-LAC as source of information in any correspondence you may have on items on this issue

To subscribe to SDI-LAC, please do so online at:
<http://www.gsdi.org/newslist/gsdisubscribe.asp>
Nancy Aguirre, PAIGH, Editor cnaguirre@ipgh.org
Global Spatial Data Infrastructure Association,
<http://www.gsdi.org>

DISCLAIMER:
GSDI, PAIGH and the Editor will not be held liable for any errors, mistakes, misprints or incorrect information.
Copyright © 2012. All rights reserved.