

Global Spatial Data Infrastructure Latin America and the Caribbean Newsletter

SDI-LAC

March 2009

Vol. 6, No. 3

Spatial Data Infrastructure-Latin America and the Caribbean (SDI-LAC) is a regional, monthly, and free, electronic newsletter from the [Global Spatial Data Infrastructure Association](#) (GSDI). It focuses on aspects related with Spatial Data Infrastructure, and on GIS, remote sensing, and data management issues, related with SDI in Latin America and the Caribbean. It aims to raise awareness, provide useful information to strengthen national SDI initiatives, and support synchronization of regional efforts.



[GSDI Definition](#)

The [Pan-American Institute of Geography and History](#) (PAIGH), member organization of GSDI, and the [Permanent Committee on Geospatial Data Infrastructure for the Americas](#) (PC-IDEA), promote SDI development in the region. The newsletter is prepared by PAIGH for GSDI.

[Message from the Editor](#)

[Input to this Issue](#)

[SDI News, Links, Papers, Presentations](#)

[Article of the Month](#)

[Geospatial Research and Applications](#)

[GIS Tools, Software, Data](#)

[Training Opportunities](#)

[Funding Opportunities, Awards, Support](#)

[Employment Opportunities](#)

[Other](#)

[Americas: Conferences, SDI Events](#)



Message from the Editor

Now, SDI-LAC Newsletter is available in Portuguese! Portuguese Translation of SDI-LAC is possible thanks to Eduardo Freitas-Oliveira, a cartographic engineer, MSc in GIS, editor of MundoGEO Web Portal and InfoGEO Magazine; and Silvana Camboim, a cartographic engineer, MSc in GIS, from GeoPlus Tecnologia e Informatica.

Due to an increasing volume of information on events, the respective section will be restricted to those events taking place in the Americas. However, for "The Rest of the World: Conferences, SDI Events", please find a link to upcoming events of global or major international interest in GSDI webpage at: <http://www.gsdi.org/newsletters.asp>

We kindly inform that SDI-LAC Newsletter is taking correspondent members in each country of the LAC region. Next issues will include their contributions. If you would like to become a correspondent for your country please contact Nancy Aguirre cnaguirre@ipgh.org. In principle the only requirement is that you are an active member in the Spatial Data Infrastructure activities of your country.

If you have news or information related to GIS, remote sensing, and spatial data infrastructure that you would like to highlight (e.g., projects, conferences, workshop announcements, publications, reports, websites of interest, etc.), kindly send them in. We would be happy to include them in the newsletter. We also encourage you to send to the editor your comments and suggestions for the continuous improvement of SDI-LAC Newsletter. **PLEASE share this newsletter with colleagues who may find the information useful, and ideally they will subscribe themselves.**

Back issues of the newsletter are at the GSDI website: <http://www.gsdi.org/newsletters.asp>

Editor, Nancy Aguirre, Pan-American Institute of Geography and History (PAIGH), <http://www.ipgh.org>, cnaguirre@ipgh.org

SDI-LAC Newsletter



Vol. 6, No.3

Global Spatial Data Infrastructure Latin America and the Caribbean Newsletter

Input to this Issue

Thank you for their contributions to this issue of the SDI-LAC newsletter to:

Suchith Anand	Centre for Geospatial Science, University of Nottingham, UK
Santiago Borrero	Secretary General, Pan-American Institute of Geography and History, PAIGH; Mexico
Matt Hamilton	Association of American Geographers, Washington, DC, USA
Kate Lance	National Space Science and Technology Center (NSSTC), Huntsville, AL, USA
Brian McLeod	CGDI Standards and Architecture Coordinator, GeoConnections, Ottawa, Canada
Douglas D. Nebert	Senior Advisor for Geospatial Technology, System-of-Systems Architect, FGDC Secretariat, USA
Joanne Ojeda	Marketing Manager, PetroGIS IIR Middle East, United Arab Emirates
Cristina Puig	Marketing and Commerce, DIELMO, Valencia, Spain
Dawn Wright	Professor, Department of Geosciences, Oregon State University, USA

[\(Back to Top\)](#)

SDI News, Links, Papers, Presentations

[IGM of Chile Director appointed representative for South America in GSDI](#)

Source: <http://www.igm.cl/>



The Board of Directors of the Global Spatial Data Infrastructure Association (GSDI), international scientific body in which the Military Geographic Institute of Chile (in Spanish IGM) is an active member, accepted the proposal that the director of the IGM of Chile, Colonel Juan Garcia Vidal Huidobro, serve as representative of the South American region before that directory. The request was approved during the January 2009 meeting. In this context, the Director of the IGM is committed to working with Spatial Data Infrastructures (SDI) at the national and international levels.

[Association of American Geographers offers membership at reduced rate for eligible professionals](#)

Source: Matt Hamilton

Latin American geographers and other professionals from the region who use GIS, remote sensing, and spatial data in their work are now eligible to join the Association of American Geographers (AAG) for US\$20 per year. Criteria for participation in this new program requires that applicants earn less than US\$25,000 per year and that they are both citizens of and residents in one of the eligible countries, which include all of the Americas except the U.S. and Canada. The AAG developing regions membership category offers all regular AAG member benefits, with the exception that publications are provided only in digital format. These membership benefits include, among others, the following:



Global Spatial Data Infrastructure Latin America and the Caribbean Newsletter

- Online access to AAG publications, the *Annals of the Association of American Geographers*, *The Professional Geographer* and *AAG Newsletter*
- Eligibility to participate in AAG research grants and awards programs
- Reduced registration fees (member rates) at the AAG Annual Meeting and other AAG-sponsored meetings
- Reduced rate on other third party geography journals offered by the AAG
- Reduced prices on AAG publications (according to normal individual membership benefits)
- Optional hard copy journals or newsletters, for small incremental fee to cover cost of shipping only
- Participation in AAG Specialty Groups and Listservs

For more information on this membership program, please visit: <http://www.aag.org/developing/index.htm>, or contact Matthew Hamilton at mhamilton@aag.org. For more information on the AAG, please visit: www.aag.org

Special panel at the Annual Meeting of the Association of American Geographers: “Geography in the Americas: Resources for Supporting International Collaboration”

Source: Matt Hamilton

The ability to carry out projects that cross cultural, national, linguistic, and disciplinary borders has become increasingly important for geographers throughout the Americas. However, the sometimes complex nature of international work may require a special set of resources to support particular needs for communication, fieldwork, travel, networking or other activities. A special panel session to be held at the Annual Meeting of the Association of American Geographers (AAG) in Las Vegas, on Monday, March 23 at 3:10 pm explores resources available from programs and services - including but also beyond funding- that can help geographers across the Americas to garner the support needed to pursue international collaboration. Representatives from public agencies, nonprofit organizations, and foundations will share information, experiences and advice on how to develop successful research projects, how to take full advantage of the unique nature of international collaboration, and how to best pursue opportunities for support. Panelists include **Santiago Borrero**, Secretary General of the Pan American Institute of Geography and History (PAIGH); **Ned Strong**, Executive Director of LASPAU: Academic and Professional Programs for the Americas, a non-profit organization affiliated with Harvard University that administers Fulbright Programs in the Americas; **Nicole Stahlmann**, Director of Fellowship Programs of the American Council of Learned Societies, oversees programs that support individual and collaborative research in the humanities and humanistic social sciences; **Ibrahim M. Shaqir**, Director of the Office of International Research Programs within the Agricultural Research Service of the US Department of Agriculture; **Mark Caicedo**, administrator of the Inter-American Foundation (IAF)' s Fellowship Program supporting graduate study on grassroots development topics in Latin America and the Caribbean; and **Jessica Robin**, Program Officer of the Americas Program in the Office of International Science and Engineering at the US National Science Foundation (NSF), where she manages the agency's activities with Argentina, Chile, Bolivia, Peru, Paraguay, and Uruguay.

Sponsored by the AAG, and co-sponsored by the Conference of Latin Americanist Geographers (CLAG) and the AAG Latin America Specialty Group, this panel continues a series of featured “Geography in the Americas” sessions held at each AAG Annual Meeting and focused on topics related to international collaboration among geographers of the Americas. For more information on this event, including complete biographies of panelists, please visit:

<http://www.aag.org/developing/latin-america/americas2009.htm>

For more information on the AAG Annual Meeting, please visit: <http://aag.org/annualmeetings/2009/index.htm>

Portal of SDI Group in Uruguay

Source: <http://www.dntopografia.gub.uy/>



Font-size: bigger smaller reset

Global Spatial Data Infrastructure Latin America and the Caribbean Newsletter

Now is available the portal of the Group of Spatial Data Infrastructure of Uruguay (in Spanish IDE) that includes: Exclusive access to the group (login and password access only); link to "Document Load and Download"; and link to "Agenda - Calendar, Documents" including a calendar of events, document manager, and e-mail groups, among other applications. For more information please log on to: http://www.dntopografia.gub.uy/index.php?option=com_content&view=article&id=8:ide&catid=1:inicio&Itemid=13

[GeoSUR ends plans to create topographic maps of South America](http://geosur.caf.com/)

Source: <http://geosur.caf.com/>



GeoSUR Program Framework includes production of digital maps for South America using the digital elevation model of the Shuttle Radar Topography Mission (SRTM). The SRTM is a joint initiative of the U.S. National Geospatial-Intelligence Agency (NGA) and NASA to produce topographic data for 80% of the landmass at a resolution of approximately 30 meters. These data are of limited distribution, the information available to the public has a resolution of 90 meters. The U.S. Geological Survey (USGS) data obtained from SRTM 30 meters resolution will be processed for the area of South America under an agreement with the NGA, which stipulates that the source data may not be distributed, but the products by GeoSUR may be available to countries and the public. Using the digital model the following derivatives could be produced: Shaded Relief, Slope, Aspect, Watersheds, Streamline, Flow Accumulation, Flow Direction, and intermediate products. GeoSUR program will make these derived maps available on the Internet, and create a geoservice that will allow users to produce derived maps dynamically. This service will allow users to perform visualization analysis, generate shaded relief maps, or produce a profile between two selected points.

[Bahamas submits official archipelagic baselines \(official maritime borders\)](#)

Source: Kate Lance

On the 11th December 2008, the Ministry of Foreign Affairs of Bahamas formally submitted the official archipelagic baselines of the Commonwealth of The Bahamas to the Secretary-General of the United Nations in accordance with Article 47(9) of the 1982 United Nations Convention on the Law of the Sea. This affirmation of the official maritime borders of The Bahamas has been achieved through many years of research, analysis and collaboration between the Ministry of Foreign Affairs, the Attorney-General's Office, the Royal Bahamas Defence Force and the Bahamas National Geographic Information Systems Centre. The culmination of these efforts has been to ensure that The Bahamas is in compliance with its obligations under international law, namely the United Nations Convention on the Law of the Sea (UNCLOS), to which The Bahamas is a state party. Also called the Law of the Sea Convention or the Law of the Sea treaty, it defines the rights and responsibilities of nations in their use of the world's oceans, establishing guidelines for businesses, the environment, and the management of marine natural resources.

[Technical Meeting on Final version of Integrated Map at scale of 1:1,000000 of Andean Community Countries: Supporting Development of the Andean SDI \(IDEC\)](http://www.geoportaligm.gov.ec:8080)

Source: <http://www.geoportaligm.gov.ec:8080>



On January 22-23, 2009 it was held a technical meeting at the Military Geographic Institute of Ecuador (in Spanish IGM) in Quito, Ecuador. Geographic / Mapping Institutes of the Andean Community -Andean subregion- participated in

Global Spatial Data Infrastructure Latin America and the Caribbean Newsletter

this meeting aimed at producing the final version of the Basic Cartography of Andean Community Countries Integrated Map at scale of 1:1,000000, and for preparing a report on the integration process for producing this map.

[Use and implementation of standards for cataloging information through metadata](http://www.clirsen.com/)

Source: <http://www.clirsen.com/>



A course was held on February 2009, on "Using and implementing standards for cataloging information through the use of metadata, and publication through Web services", at the Training Center for Remote Sensing (in Spanish CENPES) of the Center for Integrated Surveys on Natural Resources through Remote Sensing (in Spanish CLIRSEN). This course was organized by the Ministry of Planning and National Development (in Spanish SENPLADES) in coordination with the Technical Secretariat for Risk Management, and the PREDECAN Project of the Andean Community. The objective was to increase knowledge of technical scientific institutions' professionals on aspects related to information cataloging using metadata, and on the publication of map services using international standards.

[SIRGAS Meeting 2009](http://www.iag2009.com.ar)

Source: <http://www.iag2009.com.ar>

SIRGAS Meeting 2009 will be held inside the International Association of Geodesy (IAG) Scientific Assembly between August 31 and September 4, 2009 in Buenos Aires, Argentina. Whereas the objectives of SIRGAS are included within topics of the IAG's Scientific Assembly, the event organizers invite to subscribe to the Assembly, especially in Session 5 (Geodesy in Latin America).

[Spatial Data Infrastructure of the Bolivarian Alternative for Latin America and the Caribbean \(ALBA\)](http://www.mappinginteractivo.com/)

Source: <http://www.mappinginteractivo.com/>



There is a need for a new era, where information leads to cooperation on common health, education, security, defense, and special policies, allowing us to be regionally self-sufficient with respect to food, raw materials, technology, and to eradicate poverty similar to all Latin America. Hence, a project proposal on Spatial Data Infrastructure of the ALBA (IDEALBA) will be among the most important project for participant countries because it represents "Knowledge" power on all relevant, quality, and real time information produced by the state. At the same time, this project will build a network of linked nodes to provide countries of ALBA with information necessary to strengthen their union based on knowing pertinent strengths and weaknesses, with the aim of moving forward together as a block of nations, enhanced for equality, progress and welfare of our peoples. In this regard, the project will focus on achieving a common geoscientific node, such as the ALBA Geoscience database. A supplement that provides continuity to a systematic survey of georeferenced information through remote sensing and field work.

ALBA: <http://www.alternativabolivariana.org/modules.php?name=Content&pa=showpage&pid=1>

Global Spatial Data Infrastructure Latin America and the Caribbean Newsletter

[SITNA presents in Cuba and Portugal its usefulness on reaching citizens](#)

Source: <http://www.hoytecnologia.com/>

The Territorial Information System of Navarra, Spain (SITNA), promoted by the Government of Navarra, showed in Cuba and Portugal the usefulness of Spatial Data Infrastructures in bringing government closer to citizens. At the 6th Geomatics International Congress, held in Cuba between February 9 to 14, SITNA gave a presentation on the "powerful tool" that are Spatial Data Infrastructures (SDIs) for modernization of public administrations. Navarra, has responded to these requirements with the Spatial Data Infrastructure of Navarra (IDENA), which can be accessed online at: <http://sitna.navarra.es/navegar/>



[New ICT Centre in Jamaica to foster National Development Plan](#)

Source: <http://www.jamaica-gleaner.com/>

Minister of Foreign Affairs and Foreign Trade of Jamaica, Dr. Kenneth Baugh, has said that an Information Communication Technology (ICT) training centre, created at Excelsior Community College in St Andrew, should produce a cadre of persons capable of transferring their skills to others within their communities. "This initiative is important, as it represents progress, consistent with the development of Jamaica's information and communication technology sector plan, as well as Vision 2030, Jamaica's national development plan," Baugh said. A memorandum of understanding (MoU) was signed between the Government of India and Jamaica on September 3, 2008, to set up the centre here. The MoU, which falls under the Indian Technical Cooperation Programme, includes a US\$1-million grant to the Government of Jamaica. The training laboratory, which is equipped with two classrooms for 25 students each, will be provided with courseware to cover 400-600 students per year.

[Latin America and EU find common space in satellite navigation](#)

Source: <http://www.gsa.europa.eu/>



The EU and Latin America are forging ahead towards closer co-operation in the field of satellite navigation. Although Latin America has traditionally not been a major investor in the space sector, interest has increased significantly in recent years. For instance, a new Galileo station is planned to be located in Cordoba, Argentina, while Brazil, which has the most advanced space programme in Latin America, has seen investment in space research rise rapidly. The Brazil Space Agency's 2009 budget is US\$294 million. Just a decade earlier the country's entire space expenditure was estimated at around US\$120 million. International co-operation is an important component of Latin America's bid to develop its space sector. It is also integral to the EU's various space programmes, including Galileo. Since the end of 2005, the Galileo Information Centre (GIC) for Latin America has been working to raise awareness of the co-operation opportunities available and to promote collaboration under the Galileo umbrella. The information centre was set up under the initiative of the European Commission (DG TREN) and is coordinated by the LATINO consortium, a group of Latin American and European institutions led by Pildo Labs (ES).

[UNGIWG-9 Results Available](#)

Source: <http://www.unsdi.nl/>

Two documents have seen the light that mark the culmination of the efforts of the previous two UNGIWG (United Nations Geographic Information Working Group) Co-chairs Alta Haggarty and Karl Steinacker. At the expiration of their term as the 2007-08 UNGIWG Co-chairs they disclosed the [Interim UNSDI Framework](#) [701 KB] and the [UNGIWG-9 Report](#) [796 KB]. The Interim United Nations Spatial Data Infrastructure (UNSDI) Framework has been under

SDI-LAC Newsletter

6

Vol. 6, No.3

Global Spatial Data Infrastructure Latin America and the Caribbean Newsletter

development since the Rome UNSDI Deliverables meeting in February 2008 and has gone through three revisions. This final version reflects the revisions agreed to at UNGIWG-9 which were incorporated by the Secretariat shortly thereafter and approved in writing by all the UNGIWG members responsible for specific UNSDI Deliverables as well as those who suggested some of the major revisions agreed to in Vienna. The report of the Ninth Plenary of UNGIWG which took place in Vienna on 5-7 November 2008 contains the UNSDI Resolution which sanctioned the Interim UNSDI Framework. It also provides synopses of many presentations and discussions that took place during what was deemed to be a very worthwhile experience by the responders of the post-UNGIWG-9 Participants Survey. More information at <http://sites.google.com/a/ungiwgsec.org/ungiwg9/>

[Autodesk, Google, Intergraph, Microsoft, and encourage investment in Oracle Spatial Data Infrastructures in the U.S.](#)

Source: <http://www.mundogeo.com.br/>



Autodesk, Google, Intergraph, Microsoft and Oracle have just published a manifesto with a proposal to reinvigorate the U.S. economy through investments in Spatial Data Infrastructure (SDI). The document was written by Lisa Campbell, Autodesk, Dr. John Curlander, Microsoft, Steven R. Hagan, Oracle USA, Michael T. Jones, of Google, and Gen. Jack Pellicci, representing Intergraph. According to the manifesto, strengthening a National Spatial Data Infrastructure would bring immediate benefits to U.S. industry, mainly in the sectors of emergency services, urban sustainability, response to natural disasters, security, environmental protection, infrastructure development works, resource management and disease control. Read the entire document at: <http://www.cast.uark.edu/nsdi/nsdiplan.pdf>

Impact of Google Earth and Similar Companies on the Geospatial Industry and Government Programs: A Survey

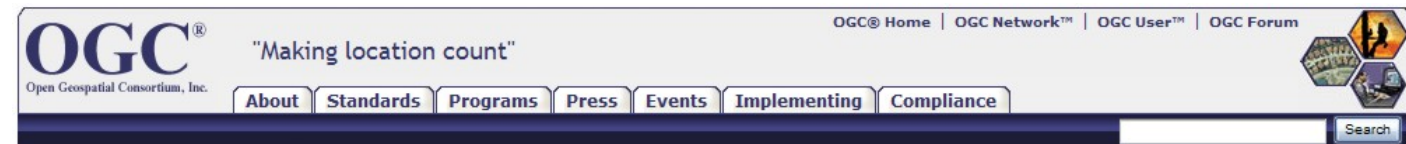
Source: Brian McLeod by way of Douglas D. Nebert

We invite you to participate in the first large scale assessment of the impact of mass market geomatics/geospatial companies (such as Google Earth or Microsoft Virtual Earth) on government mapping programs and the traditional geospatial industry. We estimate that it will take about 20 minutes to complete – this is a “top-of-mind” study. We want your opinions – no research is needed! Most answers only require checking a box or selecting from a number of alternatives. The survey can be found on Survey Monkey

http://www.surveymonkey.com/s.aspx?sm=qRbzEVAS72dRirjniQXk1Q_3d_3d

The OGC forms a Spatial Law and Policy Committee

Source: OGC Press



The Board of Directors of the Open Geospatial Consortium (OGC®) has chartered a committee of the Board to specifically address the "spatial law and policy issues" which will influence development requirements of the Consortium's technology process. The Spatial Law and Policy Committee (SLPC) will be chaired by OGC director and Executive Committee member, Kevin Pomfret, and will be organized under board leadership as an educational forum to include both select member and community participation. Visit the OGC website at <http://www.opengeospatial.org/>.

Global Spatial Data Infrastructure Latin America and the Caribbean Newsletter

OGC Network has Minutes of December 2008 TC and PC Meetings

Source: OGC(R) News January 2009

The OGC Technical Committee meetings held the week of 1 December 2008 in Valencia, Spain were sponsored by Generalitat Valenciana (CIT), Instituto Geográfico Nacional (IGN of Spain) and Universitat Jaume I. Minutes of the meeting are available to the public on OGC Network at <http://www.ogcnetwork.net/node/504>

ICA Working Group on Open Source Geospatial Technologies

Source: Suchith Anand by way of GSDI Technical list

The ICA Working Group on Open Source Geospatial Technologies website is now active at <http://ica-opensource.scg.ulaval.ca/>. I am thankful to Prof. Thierry Badard (Laval University, Canada) who has been very helpful in this. He will also be working as the chair of the WG. To subscribe to the discussion list for ICA Working Group on Open Source Geospatial Technologies visit <http://lists.nottingham.ac.uk/mailman/listinfo/ica-opensource>. I am happy to welcome Open Geospatial Consortium (OGC) as co-sponsor of the First Open Source GIS UK Conference <http://www.opensourcegis.org.uk> Professor William Cartwright (President of the International Cartographic Association) will deliver the inaugural presentation on behalf of the ICA for the conference. The deadline for abstract submissions for the conference is **15 March** 2009.



Spatial Infrastructures GITA White Paper Now Available

Fuente: <http://spatialnews.geocomm.com/>

This paper is (available for download at <http://www.gita.org/ciper/white.asp>) is intended to help readers understand Spatial Data Infrastructures, their value in managing, using, and sharing spatial information and services, and how they can assist citizens and their corporate, academic, and government institutions in addressing some of the vital issues confronting our nation and its communities.



Directions Magazine in Spanish

Source: Kate Lance



Directions Magazine announced launching of the new *Directions Magazine* portal in Spanish <http://www.directionsmag.es/>. Directions Magazine in Spanish, was born with the aim of becoming reference to the new geospatial technology sector. It is supported by

Directions Media, media group which is already the market leader in English. Geotechnology, despite being a relatively young sector, is now mature enough to be integrated with other technologies on the market. However, it has not yet been fully incorporated into solutions that society demands day by day. Very few people nowadays do not know or do not have Google Maps with a GPS navigator to avoid being lost. But behind these examples, there is a vast field of applications that have not yet been implemented. *Directions Magazine* aims to becoming the medium for knowledge exchange, and promotion of existing products to ease society's life. As of February 2, *Directions Magazine* offers selected content translated to Spanish, and additional contents related to the geo market in Spain and Latin America. Specifically, it provides coverage in various industry and geospatial technology sectors such as GIS, location services, mapping, CAD, remote sensing, web services, Business Intelligence (BI), and related applications. Newsletters, advertising, press releases, interviews (both written and in podcasts or videos), spaces dedicated to formation, and a platform for further job search, are some of the services made available by *Directions Magazine* in Spanish as of February 2. Contact details: Alberto Santos Estévez, *Directions Magazine* Geospatial News SL 654 521 012 - 91 661 88 75 (tf) asantos@directionsmag.com

Global Spatial Data Infrastructure Latin America and the Caribbean Newsletter

[ESRI's Free Online GIS Bibliography Offers a Rich Information Resource About Geospatial Technology](#)

Source: <http://spatialnews.geocomm.com/>



The ESRI GIS Bibliography, available at no cost from the Environmental Systems Research Institute (ESRI) Education and Training Web site, recently surpassed 75,000 entries, making it one of the world's largest online repositories for information about Geographic Information Science (GIScience) and Geographic Information System (GIS) technology. "Thousands of students and hundreds of professors have used the bibliography as one of their major starting points for GIS research," says Dr. Michael Gould, ESRI's director of higher education. "The ESRI GIS Bibliography at www.esri.com/training/library also serves as an excellent resource for scholars, scientists, geographers, cartographers, and professionals in a wide range of industries who want to learn about one or more aspects of GIS technology or geographic information science in their fields", Gould says. The bibliography continues to grow. On average, about 2,000 entries are added each month.

[PetroGIS: Advanced Applications for GIS in Oil and Gas](#)

Source: Joanne Ojeda



PetroGIS will take place on March 28 - April 1 2009, in Manama, Bahrain. Taking place over five days this event brings together over 250 senior decision makers within the field of GIS in Oil & Gas. This cutting-edge conference will provide a plethora of practical, best practice case studies from around the world, interactive technical workshops and work streams, as well as peer-to-peer networking to ensure delegates get the opportunity to learn and share best practice with industry leaders. The conference will bring together the best minds in the industry and allow companies to showcase their innovative projects and future plans as the region's industry gather at the only comprehensive event designed to help them solve their top challenges:

- GIS Business Case Development
- E&P Enterprise Solutions
- Overcoming Interoperability Challenges and Existing Legacy Systems
- Effective Data Analysis Strategies
- Bridging the Gap between GIS Data and Non-GIS Data
- The Value of Enterprise-Wide Data Integration
- GIS Applications in Oil Spill Management
- Quantifying ROI in GIS
- Distinguishing Between GIS Education and GIS in Education

For more information please log on to the event's webpage at <http://www.iirme.com/petroGIS/> or contact Joanne Ojeda joanne.ojeda@iirme.com

[\(Back to Top\)](#)

Global Spatial Data Infrastructure Latin America and the Caribbean Newsletter

Articles of the Month

[A Geo-service semantic integration in Spatial Data Infrastructures](#)

By Lorenzino Vaccari, Pavel Shvaiko, and Maurizio Marchese

International Journal of Spatial Data Infrastructures Research, Vol 4 (2009)

Abstract by the authors

In this paper we focus on the semantic heterogeneity problem as one of the main challenges in current Spatial Data Infrastructures (SDIs). We first report on the state of the art in reducing such a heterogeneity in SDIs. We then consider a particular geo-service integration scenario. We discuss an approach of how to semantically coordinate geographic services, which is based on a view of the semantics of web service coordination, implemented by using the Lightweight Coordination Calculus (LCC) language. In this approach, service providers share explicit knowledge of the interactions in which their services are engaged and these models of interaction are used operationally as the anchor for describing the semantics of the interaction. We achieve web service discovery and integration by using semantic matching between particular interactions and web service descriptions. For this purpose we introduce a specific solution, called structure preserving semantic matching. We present a real world application scenario to illustrate how semantic integration of geo web services can be performed by using this approach. Finally, we provide a preliminary evaluation of the solution discussed. [The complete article may be found at: <http://ijmdir.jrc.ec.europa.eu/index.php/ijmdir/article/view/107/113>]

[Systems of Systems as a Conceptual Framework for Spatial Data Infrastructures](#)

By Rubén Béjar, Miguel Ángel Latre, Javier Nogueras-Iso, Pedro Rafael Muro-Medrano, and Javier Zarazaga-Soria

International Journal of Spatial Data Infrastructures Research, Vol. 4 (2009): Articles under review

Abstract by the Authors:

This paper proposes Systems of Systems (SoS) as a conceptual framework to support the creation, evolution and study of Spatial Data Infrastructures (SDIs). After reviewing the relationship between SDIs and generic Information Infrastructures (IIs), a comparison of the latter and SoS is presented. The conclusions of this comparison lead us to propose that IIs can be considered as SoS with several distinctive characteristics. This would allow the SDI community to consider a new set of techniques, methods and tools, coming from the SoS community, to advance in SDI research and development. [The complete article may be found at: <http://ijmdir.jrc.ec.europa.eu/index.php/ijmdir/article/viewFile/124/105>]

[\(Back to Top\)](#)

Geospatial Research and Applications

[Proposal for a Geographic Information System in Risk Reduction Management Centers](#)

Source: <http://www.mappinginteractivo.com/>

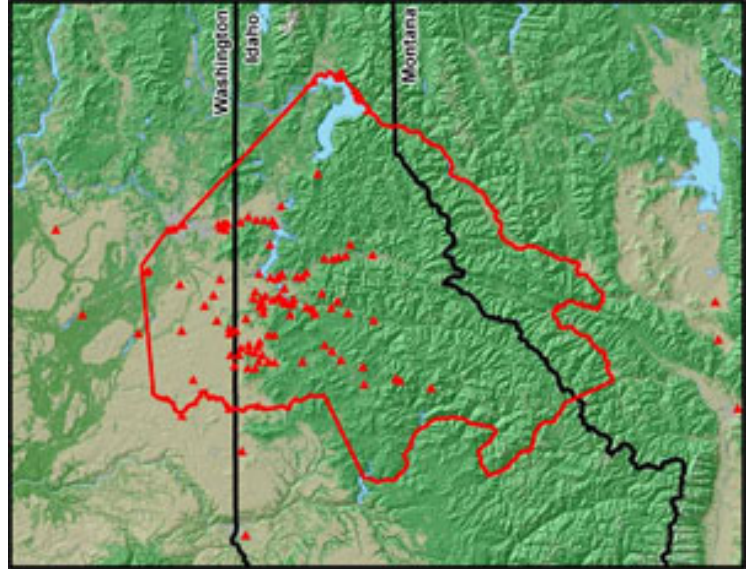
Cuba for its geographical position is very vulnerable to natural hazards, mainly hydro-meteorological hazards. As a consequence, it has been issued Directive No.1/2005 of the Vice President of the Council of National Defense aimed at planning, organizing, and preparing the country for disaster situations. Following this Directive, Risk Reduction Management Centers (in Spanish CGRR) are being established in municipalities, and areas of greatest vulnerability. These centers should include a Geographic Information System (GIS) considered a geoinformatics tool to aid effective decision making. A GIS vector data model has been proposed for these Centers, based on georeferencing of graphic information described in the Directive, and on plans for disaster reduction. Existing base maps at scales 1:100,000, 1:25,000, 1:2,000, 1:1,000, and available satellite images will be used for this purpose. Thematic information is obtained from risk, hazards, and vulnerability studies of the territory, and other detailed studies on the ground. This GIS proposal has already been implemented at the CGRR in San Juan y Martínez, and will be put into practice in 10 other centers.

Global Spatial Data Infrastructure Latin America and the Caribbean Newsletter

[Saving Disappearing Place Names](#)

Source: <http://nr.geospatial-solutions.com/>

The Coeur d'Alene Tribe's aboriginal territory comprises more than 5 million acres in three states. At the Coeur d'Alene Tribe, the primary task of the GIS program is to create and maintain data layers within the Tribe's aboriginal territory. This area spans more than 5 million acres in Washington, Idaho, and Montana. The Coeur d'Alene Tribe has also developed a data layer of place names in the Coeur d'Alene language for sites within this territory, which has evolved into the Native Names Project. One of the most important goals of this project is preserving the pronunciations of the places, and their individual stories. On many reservations across the United States, it is the unfortunate truth that only a handful of the residents know the native geographic names. The Native Names Project was created to collect these place names before they disappear forever. The project has evolved over time, and it now has several goals. The first is to use GIS to



preserve the culture and language associated with native geography; this is done by connecting native place names on a map to a Web site containing cultural information about those locations. The second goal is to have the native place names recognized by the federal government, by submitting them to the Geographic Names Information System (GNIS) through contacts they have developed during the project. The third aim of the project is to supply indigenous place names to USGS and The National Map (TNM). Since 2005, the Native Names Project has expanded to incorporate the place names of other tribes.

[Researchers create a database of old maps for Internet](#)

Source: <http://www.europapress.es/>



The group "Involvement in Sustainable Architecture and Heritage", Department of Architecture at the University of Alcalá, headed by Prof. Pilar Navarro Chías have created a database of digitized old maps

with the goal of creating a node accessible through Internet for researchers and students. Based on that the analysis of the historical landscape has relied only exceptionally in reading and interpretation of cartographic documents, this group started a decade ago to investigate the documentary sources that exist in various archives and libraries scattered throughout the country to gather maps and create a database that currently has 4,000 records. The ultimate goal is to put all that information online and create a node accessible through the science project Europeana, networking European cultural heritage whose launch is planned to start in 2010, with links to more than six million digital objects. The goal of these researchers is to locate the documents, examine their content and features, and form a cartographic database which is accessible to other researchers and the general public, and to define a set of guidelines for the use of this graphic material insight into historical development of the territories. In the future it is expected to expand the project to Latin America and the rest Europe.

Global Spatial Data Infrastructure Latin America and the Caribbean Newsletter

[GIS Best Practices: GIS is a Green Technology](#)

Source: <http://www.esri.com/>

The stories included in this e-book detail GIS-based applications for innovative, sustainable solutions to many of today's common environmental problems.



MarineMap

Source: WALIS February 2009 e-News

Farallon Geographics, working with the Marine Science Institute at UC Santa Barbara, The Nature Conservancy, and Ecotrust, has developed "MarineMap", a Web 2.0 mapping and decision support system to identify marine protected areas. MarineMap combines an extensive catalog of GIS data, sophisticated spatial analysis, and an intuitive user interface to enable members of the public to participate in the selection of marine environments that should be designated for conservation, recreational, and commercial uses. MarineMap allows participants to identify and design Marine Protected Areas (MPAs) interactively, and to share proposed MPA areas among stakeholders. Web link to full article: <http://www.fargeo.com/press/releases/gis-based-web-mapping-to-identify-marine-protected-areas/>

Wind Energy Mapping Tool

Source: WALIS February 2009 e-News

FirstLook offers estimates of the wind resource globally, allowing you to compare the wind resource from Timbuktu to Bengaluru, Gdansk to Lake Titicaca, and Brisbane to Houston. FirstLook provides a thorough wind resource and power assessment, including detailed site statistics. It utilizes advanced scientific modelling techniques and the latest wind models to tell you what time of year and day you can expect the highest wind speeds at your site. It also advances the wind assessment process with a revolutionary, easy-to-use tool based on superior wind map data. The report format is standardized for all sites, helping improve the productivity of your due-diligence process. Visit the website for more at: <http://firstlook.3tier.com/faq/wind/>



[NASA Tracks a Green Planet Called Earth](#)

Source: <http://www.spacemart.com/>

NASA's satellite imagery, combined with high-resolution commercial imagery, is giving scientists new insight into the changing appearance of our planet on a regional scale, and whether it is due to human activity or extreme climate. Researchers from NASA Ames Research Center, Moffett Field, Calif., and California State University Monterey Bay, Seaside, Calif., analyzed several years of imagery data collected by the Moderate Resolution Imaging Spectroradiometer (MODIS) instrument aboard the NASA Terra satellite, and then fused these results with high-resolution commercial images to identify changes to local vegetative "green" areas. They found that regional land cover disturbances can be identified, most recently as wildfire-burned areas and extensive forest harvests.



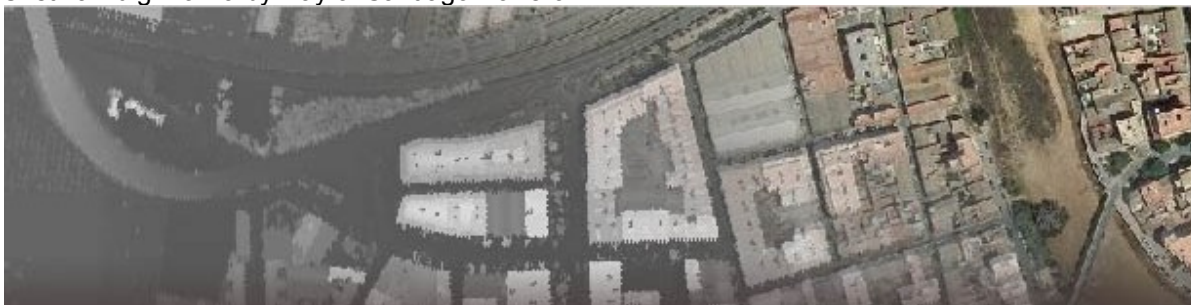
[\(Back to Top\)](#)

Global Spatial Data Infrastructure Latin America and the Caribbean Newsletter

GIS Tools, Software, Data

DielmoOpenLiDAR: New Free Software for LIDAR Data Management

Source: Cristina Puig Molina by way of Santiago Borrero



For over 5 years DIELMO 3D S.L. has been working on developing software for processing LIDAR data, using it internally to produce Digital Terrain Models (DTM) in a number of projects, and obtaining higher quality and precision in final products than that offered by commercial software currently available in the market. With support of the Ministry of Infrastructure and Transportation of the Generalitat Valenciana (CIT) it was decided to take the initiative of creating DielmoOpenLiDAR (more information and downloads at <http://www.dielmo.com/dielmoopenlidar.php>). DielmoOpenLiDAR is a free software with GNU license, based on gvSIG to process LIDAR data. At the moment developed a driver for accessing LIDAR data in gvSIG. This driver is the basis for managing data in different formats, so that gvSIG is provided with basic tools that allow developers to work with LIDAR data in the most transparent and simple way as possible. Moreover, it will also enable gvSIG users to open original LIDAR data (LAS and BIN), overlaid on any other geographic information layer, and to query and edit original values of each point.

ESRI's ArcGIS for AutoCAD Provides Easy GIS and CAD Interoperability: New Version Allows AutoCAD Users to Share and Use GIS Information without Disrupting CAD Workflow

Source: ESRI Press release



The ArcGIS for AutoCAD free download by ESRI has radically improved the ease with which users can share and use Geographic Information System (GIS) content with AutoCAD files while preserving existing CAD workflows. ArcGIS for AutoCAD Build 200, which was released on February 2009, offers simple interoperability; it gives AutoCAD users access to enterprise GIS data and imagery published by ArcGIS Server within the AutoCAD environment. It also gives them a means to prepare data with AutoCAD for use in ArcGIS. ArcGIS for AutoCAD Build 200 supports ArcGIS Server 9.3 cached map services, ArcGIS Server map services on secure servers, and free and premium map service content available from [ArcGIS Online Services](#). In addition, ESRI has developed a data-encoding method called mapping specification for drawings, which has been implemented in ArcGIS for AutoCAD Build 200 and ArcGIS 9.3. This new data-encoding method allows users to create, manipulate, and define how CAD data is organized and attributed as GIS content while remaining true to existing CAD standards. It also offers tools that allow users to create and edit GIS feature classes within standard AutoCAD files and add attributes to any AutoCAD entity. ArcGIS for AutoCAD is compatible with AutoCAD 2007, 2008, and 2009 and ArcGIS Server map services 9.2 and above. To download this free application and to learn more, visit www.esri.com/autocadapp

Global Spatial Data Infrastructure Latin America and the Caribbean Newsletter

UN International Border Geodatabase 2009

Source: SALB Newsletter January 2009, Vol. IX No. 1



The 2009 version of the UN international border geodatabase, build on a completely revisited methodology by UN Cartographic Section, is available for download by UN entities from: <http://boundaries.ungiwg.org/>

LCNSS is Better than GNSS

Source: WALIS January 2009 eNews

Low Cost Navigation Satellite Systems (LCNSS) are designed to optimize performances over the area of interest while trying to minimize the overall costs. Demand for Satellite Navigation technology and applications keeps on increasing in a wide range of economical, social, technological and environmental sectors. This growing interest in the development of Satellite Navigation Systems is demonstrated by the interest of several countries in starting the development of new systems or contributing to existing ones.

Web link to full article: <http://mycoordinates.org/dec08/lcnss.php>

[Source: Maria D Lainez, GMV Aerospace and Defence S.A. and Miguel M Romay, GMV Aerospace and Defence S.A. Originally appeared in Coordinates, Volume IV, Issue 12, December 2008]

[After Google Earth comes Google Ocean](#)

Source: <http://www.terraily.com/>

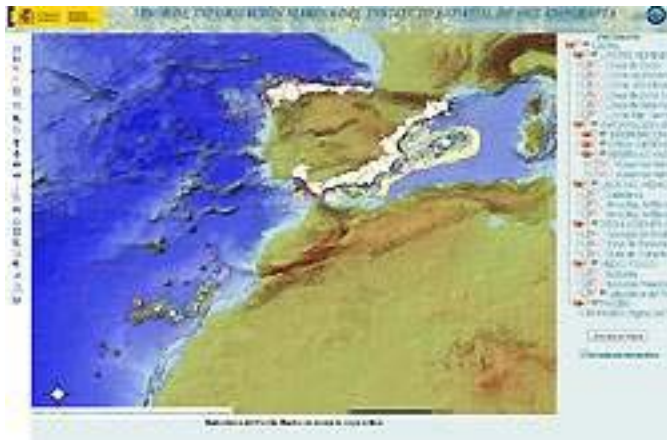
The search engine Google launched a new service Monday, February 2 to allow Internet users to explore the depths of the world's oceans from the comfort of their homes on dry land. The "Ocean in Google Earth" feature will allow users to "dive beneath the water surface, explore 3D underwater terrain and browse ocean-related content contributed by marine scientists," a Google statement said. "Google Earth is equipping itself with a new dimension: depth," Jean-Francois Wassong, an engineer at Google France, told a news conference. Nearly four years after Google Earth enabled users to zoom in to view streets, and later explore galaxies in the sky, the latest version of the software allows virtual travellers to dart across miles of uncharted territory underwater. The feature includes 20 different layers of content contributed by leading ocean explorers, scientists and researchers, such as photos and videos of "hot spots" around the world and information on marine protected areas. It also has an animal tracking device in which users can follow animals that have been tagged by satellite. For more information on this process please visit: <http://google-latlong.blogspot.com/2009/02/deep-dive-into-ocean-in-google-earth.html>



Global Spatial Data Infrastructure Latin America and the Caribbean Newsletter

[Spanish marine geographic information at a single click](#)

Source: <http://lapescasubmarina.com/>



The development of this Web portal is part of SIDFOMAR, a project coordinated by José Luis Sanz Alonso and which aims to organize, unite and standardize existing information or to be acquired on the marine environment, and to develop easy access and consulting systems, while maintaining and enhancing the Marine Geographic Information System (GIS) developed in previous projects. The new Web viewer will lay the foundation for creating a spatial data infrastructure on marine information that may be integrated to the Spatial Data Infrastructure of Spain (in Spanish IDEE), a project of the Ministry of Development which aims to integrate online data, metadata, services and geographic information of all kinds produced in Spain. Access to the "[Visor de información marina del IEO](http://mapserver.ieo.es/website/WMS_IEO/viewer.htm)" (http://mapserver.ieo.es/website/WMS_IEO/viewer.htm)

[pTolomy3D Open Source Viewer Makes it Easy to put your Content into 3D for your Webpages](#)

Source: <http://spatialnews.geocomm.com/>

The pTolomy3D viewer is an independent open source project which can be used to develop custom 3D mapping applications on a globe without restraints. This unique 3D viewer is truly open source while also being a Java based browser client. This means there is no need for extra software or installs, nor traditional per seat licensing/maintenance fees. You can learn more about pTolomy3D by visiting the project's website at www.pTolomy3D.org. If you would additional information, please contact Joshua McNary, Marketing Advocate, jmcnary@spatialcloud.com.



[\(Back to Top\)](#)

Training Opportunities

[International Course on Remote Sensing for Environmental Characterization](#)

Source: <http://www.cathalac.org/>



On **March 23 to 27, 2009**, will be held at headquarters of the Water Center for the Humid Tropics of Latin America and the Caribbean (CATHALAC) in Panama, an "International Course on Remote Sensing for Environmental Characterization". This course seeks enhancing skills on using remote sensing and GIS tools. Practical applications related to environmental characterization of interest to participants will be conducted. Online Registration: By **March 6 2009**: www.cathalac.org/educacion/registro. More information http://www.cathalac.org/index.php?option=com_content&task=view&id=835&Itemid=338

[Course on SRTM data modeling to be held in June 2009](#)

Source: <http://geosur.caf.com/>

GeoSUR Program announced the "South American Course on Production, Use and Modeling of Relief Maps, Digital Elevation Models and High Resolution Hydrographical Maps". The course will be conducted at the Center for Earth Resources Observation and Science (EROS) in the U.S. Geological Survey (USGS) in Sioux Falls, South Dakota,

Global Spatial Data Infrastructure Latin America and the Caribbean Newsletter

USA, on **June 8-12**, 2009. The course is directed to Geographic Institutes of South America and Panama, and other institutions producing and using elevation models. Specialists interested on participating may send a communication to GeoSUR Program's Coordinator, Mr. Eric van Prag, email: evanpraag@caf.com

GeoSUR Remote Technical Assistance Program

Source: <http://geosur.caf.com/>

GeoSUR Program is advancing a plan to support participating institutions on the establishment of geoservers and WMS services. Specialists of the Geographic Institute "Agustin Codazzi" (IGAC) of Colombia, Military Geographic Institute of Chile, the Inter-American Biodiversity Information Network (IABIN), the U.S. Geological Survey and the Ministry of Environment of Mexico are now offering remote technical assistance to a first group comprised by the Military Geographic Institute of Argentina, Military Geographic Service of Uruguay, and some other institutions, to support them in establishing or improving their map services. The innovative aspect of this scheme is that specialized tutors should not be physically moved to the assisted institutions: control is taken of the remote server that hosts the map service, and a diagnosis, or direct problems' correction is performed. This scheme allows GeoSUR to provide better and more timely assistance to a larger number of institutions with a flexible schedule and low cost. Remote technical assistance will be complemented with some technical visits to those institutions needing further attention.

1st Latin-American Congress on Valuation

Source: Lincoln Institute of Land Policy - Program for Latin America and the Caribbean



The Lincoln Institute of Land Policy conducts various educational activities in Latin America, including training courses and training on policy issues and urban land markets. The "First Latin American Congress on Valuation", which will be held in Bogotá, Colombia from 11 to 12 March 2009, in collaboration with the Lonja de Propiedad Raíz of

Bogotá. This conference seeks to provide access to knowledge and experience of international experts and national contributions in the field of valuation, giving the experiences of various cities in Colombia and other countries. The course is designed for experienced professionals in Latin America such as real estate agents, property appraisers, promoters, developers, builders, architects, lawyers, economists, accountants, government officials involved in processes of land use and land management and, in general, to all those related to urban development. Deadline for applications is **March 7**, 2009. For more information, please visit the enet's page at the following link: <https://www.lincolnst.edu/education/education-coursedetail.asp?id=575>

On this page you will find a document "Call and Information", which explains the objectives and themes to be addressed, as well as basic information about the application and participation terms. For inquiries and further information, please contact: capacitacion@lonjadebogota.org.co or eventos@lonjadebogota.org.co

CLIRSEN Courses 2009

Source: <http://www.clirsen.com/>

The scheduling of courses and events 2009 of the Training Center of Remote Sensing (in Spanish CENPES) of the Center for Integrated Surveys on Natural Resources through Remote Sensing (in Spanish CLIRSEN) is now available at: http://www.clirsen.com/clirsen/index.php?option=com_content&task=view&id=41&Itemid=2 Inside this page you may find specific contents and dates on upcoming courses and events.



[\(Back to Top\)](#)

Global Spatial Data Infrastructure Latin America and the Caribbean Newsletter

Funding Opportunities, Awards, Support

Postgraduate Certificate in Ocean Bathymetry at the University of New Hampshire, USA (2009-2010)

Source: Dawn Wright



The Nippon Foundation of Japan has provided funding for GEBCO to train a new generation of scientists and hydrographers in ocean bathymetry. The 12-month course, leading to a Postgraduate Certificate in Ocean Bathymetry (PCOB), has been held at the University of New Hampshire, USA since 2004. Please note that submission of applications for entry in 2009 closes on 16 March 2009. The intense coursework requires ease and fluidity in written and spoken English. The selection process will aim at choosing candidates from a wide geographic distribution of coastal countries. More information and application forms are available at http://www.gebco.net/training/training_project

Fulbright Scholarships: Call 2010

Source: Fulbright Colombia

Fulbright Colombia is pleased to announce the opening of its call for 2010. To see grants portfolio please log on directly to the new website at www.fulbright.edu.co



[ESRI Offers US\\$16,000 in Cash Prizes for 2009](#)

Source: ESRI Press Release



ESRI invites developers to share their creativity and expertise with the Geographic Information System (GIS) developer community by submitting original code samples to the ArcGIS Server Mashup and ArcGIS Mobile Code Challenges at www.esri.com/codechallenge. The first-place prize for the ArcGIS Server Mashup Code Challenge is US\$7,000, and the second-place prize is US\$3,000. The first-place prize for the ArcGIS Mobile Code Challenge is US\$4,000, and the second-place prize is US\$2,000. To enter either of the code challenges, developers need to submit an original code sample using ArcGIS Server or ArcGIS Mobile. To qualify, the online entry form must be submitted by **March 6, 2009**, at 5:00 p.m. Pacific standard time. The developer community will vote for first- and second-place winners for each challenge. Winning applications will be announced no later than Thursday, March 26, 2009, at the Developer Summit and will be showcased on ESRI.com. For official rules and detailed guidelines, visit www.esri.com/codechallenge

[\(Back to Top\)](#)

Employment Opportunities

[Job offers in geodesy and cartography at IGSBV, Venezuela](#)

Source: <http://www.igvsb.gov.ve/>

The Geographic Institute "Simón Bolívar" of Venezuela (in Spanish IGSBV) has opened up vacancies for the following staff: Professional on Digital Photogrammetry and Cartography, Cartographic Quality Control; Cartographic Editor -- Graphic Designer, and Operator of Restitution. Requirements for these positions are available at the IGSBV website: http://www.igvsb.gov.ve/site2007/index.php?option=com_content&task=view&id=151&Itemid=147. Interested parties

Global Spatial Data Infrastructure Latin America and the Caribbean Newsletter

may send a CV with recent photography to: IGVSb. Av. Este 6, Camejo a Colón, Edificio Camejo, El Silencio, or via e-mail at rrhh@igvsb.gob.ve; oescalona@igvsb.gob.ve ; mduran@igvsb.gob.ve

[Senior Consultant/Project Manager - Spatial Data Infrastructure, ESRI](#)

Source: <http://www.gjc.org/>



Location: Redlands, CA; Position Description: Use your knowledge of Spatial Data Infrastructure (SDI) standards to provide consulting and project management services in the SDI market. This is a challenging opportunity to help our customers participate in a societal GIS in which stakeholders utilize shared distributed GIS services based on a framework of common standards and policies. Learn more about a career in GIS Services at ESRI and apply online at www.esri.com/careers/consulting

[Post-Doc or Research Fellow in GIS/Remote Sensing, University of Minnesota](#)

Source: <http://www.gjc.org/>

The position deals with quantification of sediment losses from bank erosion using airborne LiDAR. Qualifications include a Ph.D. or a Master's degree in GIS, Remote Sensing, Soils, Water Resources or other related fields. Knowledge of ArcGIS and other geospatial tools is a must. Previous experience with LiDAR data processing is desirable. If interested, please post your application at the following web site: <https://employment.umn.edu/> and under Search Postings look for requisition # 160004 for the Post-Doctoral Associate position (PhD required) and requisition # 160003 for the Research Fellow position (MS required). Questions may be directed to Dr. Satish Gupta, Dept. of Soil, Water, & Climate, 1991 Upper Buford Circle, University of Minnesota, St. Paul, MN 55108; email: sgupta@umn.edu.

Post Doctorate Position in Land Change and Epidemiological Modeling - University of North Carolina at Charlotte, Center for Applied GIScience

Source: UCGIS list



We seek a post-doctoral fellow or exceptionally talented M.Sc. to contribute to the development of two GIS-based modeling efforts: 1) spatially-explicit modeling of urban growth and land-cover change in North Carolina and 2) spatially-explicit epidemiological modeling of the emerging infectious forest disease sudden oak death in California. The position will work closely with quantitative geographers, ecologists, mathematical epidemiologists, and remote sensing specialists to provide programming and computational solutions for scenario-based simulations in raster computing environments. Qualified candidates should be familiar with GIS software and data models, as well as advanced programming languages. Due to the large spatial scale of these models, experience in optimizing complex algorithms is highly desired. Interdisciplinary background applicable to understanding spatio-temporal dynamics of urbanization and/or disease spread is a plus. Evidence of technical writing skills and publication potential in high impact journals is expected. Travel to coastal California and/or Cambridge University (UK) for fieldwork and research collaboration is likely. The position will be located at UNC Charlotte in the Center for Applied Geographic Information Science (www.gis.uncc.edu) with a 1 year appointment. Funding for subsequent years is likely. Start date: As soon as possible. Review of application will begin immediately. Applicants should submit the following via email to Ross Meentemeyer at rkmeente@uncc.edu: cover letter summarizing background and interest in this position, curriculum vitae, and the names of 3 references (no letters needed at this point). Please include "Modeling Application" in the subject line of your email.

[\(Back to Top\)](#)

Global Spatial Data Infrastructure Latin America and the Caribbean Newsletter

Other

[A Strong Impact is Made on the Amazonia by its Economic Growth Model](#)

Source: <http://media-newswire.com/>

The report, "Environment Outlook in the Amazonia: GEO Amazonia," uncovers a revealing panorama of accelerated ecosystem transformation and a marked environmental degradation in this vast region of the South American humid tropics -shared by Bolivia, Brazil, Colombia, Ecuador, Guyana, Peru, Suriname and Venezuela- which is also the planet's most extensive forest zone. The study, prepared by the 8 Amazonian countries, with the support of the United Nations Environment Programme (UNEP) and the Amazon Cooperation Treaty Organization (ACTO), is a new publication in UNEP's series of integrated environmental assessments, also known as GEO (Global Environment Outlook) reports, and on which more than 150 experts, researchers, academics and scientists in the countries of the assessed region participated. After more than two years of analysis, the experts affirm that a joint action of the Amazonian governments in the following areas could enable the region to face the challenges (of the changing environment): construction of an integrated environmental vision for Amazonia, and definition of a role of the region in national development; harmonization of environmental policies on regionally relevant themes; design and application of instruments for integrated environmental management; regional strategies that allow sustainable utilization of Amazonian ecosystems; insertion of risk management in the public agenda; strengthening of Amazonian environmental institutions; increased effort on environmental information production and dissemination in the region; promotion of studies and the economic value of Amazonian environmental services; and designing of a monitoring and evaluation system of policies, programmes and projects. In essence, the publication points out that the growing environmental degradation in the Amazonia can be seen by the advance of deforestation, the loss of biodiversity, and localized climate change impacts.

[More than 140,000 aerial photographs of the Canary Islands, for free on Internet](#)

Source: <http://www.idecan.grafcan.es/idecan/>

Now available in the IDECanarias photo-library archive (aerial imagery). With this initiative Canary Islands Government has made public and free the consultation of a collection of aerial photographs of the archipelago from 1950 to the present. This file has more than 140,000 images that began being digitized a few years ago. Currently there are more than 77,000 photographs in high resolution digital version that may be checked via the WMS. In order to facilitate the use of the service Fototeca IDECanarias and for more information you may access the website of the [Spatial Data Infrastructure of the Canary Islands \(IDECanarias\)](#).



[Dominican schools to benefit from ICT programme](#)

Source: <http://www.caribbeannetnews.com/>

Fourteen secondary schools and five primary schools in Dominica are set to benefit from the schools computer programme being funded by the ICT development programme of the Ministry of Housing, Lands and Telecommunications, and the European Union to the tune of US\$568,000. The computerization of schools and the implementation of an IT curriculum have been identified by the Ministry of Education as one of the priority areas for Educational development in Dominica.

[Commercial Operations of GeoEye-1 Start](#)

Source: <http://www.gim-international.com/>

GeoEye is starting commercial operations for its new GeoEye-1 Earth-imaging satellite. The Company is also submitting imagery from the satellite to the National Geospatial-Intelligence Agency (NGA) for their certification under the terms of the NextView contract. The NextView program is designed to ensure that the NGA has access to commercial imagery in support of its mission to provide timely, relevant and accurate geospatial intelligence in support of national security. Website: <http://geofuse.geoeye.com/>



[\(Back to Top\)](#)

Global Spatial Data Infrastructure Latin America and the Caribbean Newsletter

Americas: Conferences, SDI Events – Year 2009

[Year 2009](#) January February [March](#) [April](#) [May](#) [June](#) [July](#) [August](#) [September](#) [October](#) [November](#) [December](#)
[Year 2010](#) January February [March](#) [April](#) May June [July](#) August September October November December

MARCH 2009		
1-6	Mexico D.F, Mexico	Meeting of the Internet Corporation for Assigned Names and Numbers (ICANN 34)
2-5 *NEW*	Myrtle Beach SC, USA	Coastal GeoTools
3-5	Cocoa Beach FL, USA	Committee on Earth Observation Satellites (CEOS) SIT-23
5-6	Panama City, Panama	Seminar and Workshop "Towards Development of the Spatial Data Infrastructure of Panama - IPDE"
March 6 - April 3 *NEW*	Baltimore, MD, USA	AutoCAD Civil 3D and Roadway Design – Transportation for a New Age
9-10	Washington DC, USA	Joint FIG / World Bank Conference - Land Governance in Support of the Millennium Development Goals: Responding to New Challenges Contact: Markku Villikka / E-mail: fig@fig.net
9-11	San José, Costa Rica	Fifth Coordination Meeting for Governments and Organizations Implementing or Funding Biosafety Capacity-building Activities Further information: http://www.cbd.int/biosafety/
9-12	Bogotá, Colombia	First National Congress on Protected Areas "Toward a Complete, Representative, and efficiently managed Protected Areas National System" Contact: Julia Miranda Londoño Email: direcciongeneral@parquesnacionales.gov.co
9-13	Baltimore MD, USA	ASPRS Annual Conference
15-18	Chicago IL, USA	12th Annual American Association of Airport Executives (AAAE) GIS Conference & Exhibition
16-20	Havana, Cuba	Geosciences 2009: 3rd Cuban Convention on Earth Sciences http://www.cubacienciasdelatierra.com info@cubacienciasdelatierra.com
17-18 *NEW*	Washington DC, USA	MAPPS Federal Programs Conference
19 *NEW*	Mission KS, USA	Seiler Technology Conference

Global Spatial Data Infrastructure Latin America and the Caribbean Newsletter

21-24	Palm Springs CA, USA	<u>2009 ESRI Worldwide Business Partner Conference (BPC)</u>
22-27	Las Vegas NV, USA	<u>Association of American Geographers Annual Meeting</u>
23-26	Palm Springs CA, USA	<u>2009 ESRI Developer Summit</u>
23-27 *NEW*	Campus Pampulha - Belo Horizonte Minas Gerais, Brazil	<u>4TH Geological Week ICM/UFMG</u>
March 24 - April 8 *NEW*	Web cast, USA	<u>Webcast: What's New in AutoCAD 2010</u>
March 28 - April 1	Manama, Bahrain	<u>PetroGIS</u>
March 30 - April 1 *NEW*	Denver Colorado, USA	<u>SPAR 2009</u>
March 31 - April 1 *NEW*	Sugar Land, TX USA	<u>Mapping Our Pipeline Future</u>
March 31 - April 2	Los Angeles, Anaheim, CA, USA	<u>World Congress on Computer Science and Information Engineering CSIE 2009</u> E-mail: csie2009@world-research-institutes.org

APRIL 2009

1-3 *NEW*	Las Vegas NV, USA	<u>CTIA Wireless 2009</u>
2-3 *NEW*	Calgary, Canada	<u>ESRI Regional User Conference</u>
3-7	Montevideo, Uruguay	<u>12th Meeting of Latin American Geographers "Walking through Latin America in Transformation"</u> Contact: info@egal2009.com
5-8	Oklahoma City OK, USA	<u>GeoSpatial Information Systems for Transportation - GIST 2009</u>
6-9	Sacramento CA, USA	<u>15th Annual CalGIS Conference</u>
8-9	Ontario, Canada	<u>Expedition 2009 – DMTI's Annual Customer and Partner Conference</u>
8-10	Monterey CA, USA	2009 SSA Annual Meeting Web: http://www.seismosoc.org/meetings/index.php#2009
13-17	Cholula, Puebla, Mexico	International Conference on Water, Environment and Health Sciences: The Challenges of Climate Change E-mail: icwehs@yahoo.com / Web: www.udlap.mx/ICWEHS

Global Spatial Data Infrastructure Latin America and the Caribbean Newsletter

14-17	Mendoza, Argentina	Meeting of the Argentinean Association of Geophysics and Geodesy
14-17	Malargüe, Argentina	3rd. International Maar Conference Email: info@3imc.org / Web: http://www.3imc.org/
15 *NEW*	São Paulo, Brazil	Infogeo and InfoGPS – GeoWeb & GPS Seminary
19-22	Tampa FL, USA	GITA's Geospatial Infrastructure Solutions Conference 32
20-24	Montreal, Canada	Meeting of the Ad Hoc Technical Expert Group on Risk Assessment and Risk Management under the Cartagena Protocol on Biosafety Further information: http://www.cbd.int/biosafety/
21-23	Kearney NE, USA	2009 Nebraska GIS/LIS Association Symposium
23	Tampa FL, USA	Oracle Spatial User's Conference
25-30	Natal, Brazil	14th SBSR - Brazilian Symposium on Remote Sensing Contact: sbsr@dsr.inpe.br
27-29	Jacksonville FL, USA	2009 Southeast Regional User Group (SERUG) Conference
27-30 *NEW*	Palm Desert CA, USA	Field Service 2009
28-29 *NEW*	Ontario, Canada	ESRI Regional User Conference

MAY 2009

4-6	Denver CO, USA	2009 ESRI Business GIS Summit
6-8 *NEW*	Los Polvorines, Argentina	First National Congress on Ecology and Soils Biology: CONEBIOS2009 Contact: Dr. Fernando Momo Correo electrónico: conebios2009@ungs.edu.ar
10-14	Montreal, Canada	5th World Conference on Environmental Education
11-14	Charlotte NC, USA	BE Conference 2009
12-14 *NEW*	Arlington VA, USA	First Joint Aeronautical Information Exchange Model (AIXM) and Weather Information Exchange Model (WXXM) Conference - Integrating Information for the Future

Global Spatial Data Infrastructure Latin America and the Caribbean Newsletter

13-15 *NEW* Tentative	Montreal, Canada	<u>Expert Meeting on Mainstreaming Biodiversity in Development Cooperation</u>
13-15	Santiago de Cuba, Cuba	<u>4th International Conference on Integrated Management of Coastal Zones, CARICOSTAS 2009</u> Contact E-mail: ofelia_haydee@yahoo.es / ofelia@csh.uo.edu.cu / caricostas@cemzco.uo.edu.cu
14-15 *NEW*	Botucatu SP, Brazil	<u>Symposium on Agricultural Sciences Geostatistics</u>
19-20	Grantville PA, USA	<u>Seventeenth Annual Pennsylvania GIS Conference Announced</u>
19-21	Burlingame CA, USA	<u>Where 2.0</u>
19-22	Quebec, Canada	<u>IUFRO Conference on Extending Forest Inventory & Monitoring Over Space & Time</u> Contact: Dr. Ronald E. McRoberts / E-mail: rmcroberts@fs.fed.us
19-24 *NEW*	Washington DC, USA	<u>International Marine Conservation Congress (IMCC)</u>
20-21 *NEW*	Victoria BC, Canada	<u>ESRI Regional User Conference</u>
20-24	Washington DC, USA	<u>International Congress on Marine Conservation</u> Contact: IMCCprogram@conbio.org
24-27	Toronto, Canada	Joint Assembly AGU 2009 Web: http://www.agu.org/meetings.shtml
25-27	Baton Rouge LA, USA	<u>CGGM 2009</u> Contact: iglesias@unican.es
26-29	Victoria, Canada	<u>CGI 2009</u> Contact: blob@cs.uvic.ca
28-30	Victoria, Canada	<u>CAe 2009</u> Contact: pmh@cs.bath.ac.uk

JUNE 2009

1-4	Vancouver, Canada	<u>GeoTec 2009</u>
2-3 *NEW*	Prince George BC, Canada	<u>ESRI Regional User Conference</u>
3-5	Orlando FL, USA	<u>Pitney Bowes Business Insight User Conference</u>

Global Spatial Data Infrastructure Latin America and the Caribbean Newsletter

5-8	Providence RI, USA	<u>Second GIS in Public Health Conference: "Putting Health in Place with GIS"</u>
8-9	Estes Park CO, USA	<u>GeoGathering 2009</u>
11-12 *NEW*	Whistler BC, Canada	<u>2009 FME International User Conference</u>
13-16	Green Bay WI, USA	<u>2009 Indigenous Mapping Network Conference</u>
15-18	Washington DC, USA	<u>Intergraph 2009</u>
15-19	Rotterdam, The Netherlands	<u>GSDI - 11 Conference</u> Theme: "SDI convergence on global level: Bridging the SDI's in Europe, the America's, Asia and the Pacific, and Africa" Contact: Harlan Onsrud, e-mail: onsrud@gsdi.org
17-19 *NEW*	Heredia, Costa Rica	<u>XII Ibero-American Conference on Geographic Information Systems</u> E-mail: sibsig@una.ac.cr
21-27 *NEW*	Ciudad de Loja, Ecuador	<u>PARAMUNDÍ, Bleak Plateau, 2nd World Congress</u>
25-29 *NEW*	Brewster MA, USA	<u>MAPPS Summer Conference</u>

JULY 2009

2-15	Rio de Janeiro, Brazil	XXVII General Assembly IAU Web: www.iau.org
5-8	St. John's (Newfoundland), Canada	6th International Symposium on Spatial Data Quality (ISSDQ 2009) , "Quality: From Process to Decisions" Contact: Rodolphe Devillers / E-mail: issdq2009@mun.ca
6-10	Havana, Cuba	<u>7th International Convention on Environment and Development</u> Contact: MsC. Isabel Torna Falco / E-mail: convencion@ama.cu
6-10 *NEW*	Viçosa, MG, Brazil	<u>13th Brazilian Symposium on Applied Physical Geography</u>
10-13	Orlando FL, USA	<u>The 2nd International Symposium on Academic Globalization: AG 2009 Jointly with the 13th Multi-conference on Systemics, Cybernetics and Informatics: WMSCI 2009</u> E-mail: ag@mail.iiis2009.org
10-13	Orlando FL, USA	<u>IMETI 2009, Engineering and Technological Innovation (IMETI)</u> E-mail: imeti@mail.iiis2009.org
10-13	Orlando FL, USA	<u>AG 2009 Academic Globalization (AG)</u> E-mail: ag@mail.2009iiisconferences.org

Global Spatial Data Infrastructure Latin America and the Caribbean Newsletter

10-13	Orlando FL, USA	<u>CCCT 2009</u> Computing, Communications and Control Technologies (CCCT) E-mail: ccct@mail.2009iisconferences.org
10-13	Orlando FL, USA	<u>KGCM 2009</u> Knowledge Generation Communications Management (KGCM) E-mail: kgcm@mail.2009iisconferences.org
11-14	San Diego CA, USA	<u>2009 ESRI Survey & Engineering GIS Summit</u>
11-14	San Diego CA, USA	<u>2009 ESRI Education User Conference</u>
11-14 *NEW*	San Diego CA, USA	<u>2009 ESRI Homeland Security GIS Summit</u>
13-17	San Diego CA, USA	<u>29th ESRI International User Conference</u>
14-16	São Paulo, Brazil	<u>GEOBrasil Summit 2009</u> 10° International Geoinformation Congress and Exhibition Brazil Contact: info@geobr.com.br
19-29	Montreal, Canada	iaMas-iapsO-iaCs-Assembly-2009 (MOCA-09) Web: http://iamas-iapso-iacs-2009-montreal.ca/
21-23 *NEW*	São Paulo, Brazil	<u>2nd Expo GPS - 2009</u>
21-23	São Paulo, Brazil	Geosummit Latin-American 2009 Web Site: http://www.geobr.com.br
21-24	Presidente Prudente, Brazil	<u>6th International Symposium on Mobile Mapping Technology - MMT'09</u> E-mail: mmt2009@fct.unesp.br
27-31	Vancouver BC, Canada	<u>GeoWeb 2009</u>

AUGUST 2009

4-6 *NEW*	Providence RI, USA	<u>2009 URISA/NENA Addressing Conference</u>
2-15	Rio de Janeiro, Brazil	XXVII General Assembly International Astronomical Union (IAU) Web: www.iau.org
3-7	New Orleans, Louisiana	<u>SIGGRAPH 2009</u>

Global Spatial Data Infrastructure Latin America and the Caribbean Newsletter

12-14	Fairfax VA, USA	The 17th International Conference on Geoinformatics (Geoinformatics 2009) Contact: info@geoinformatics2009.org
August 31 – September 4	Buenos Aires, Argentina	International Association of Geodesy Scientific Assembly IAG 2009 "Geodesy for Planet Earth" Contact: Dr. Charles K Toth, E-mail : toth@cfm.ohio-state.edu

SEPTEMBER 2009

10-11 *NEW*	Regina SK, Canada	ESRI Regional User Conference
13-16	Columbus OH, USA	APWA's 2009 International Public Works Congress and Expo
13-17	Houston TX, USA	GIS for Oil & Gas Conference and Exhibition
15-17	Loveland CO, USA	GIS in the Rockies
17-18 *NEW*	Edmonton AB, Canada	ESRI Regional User Conference
22-23	Plymouth MI, USA	PLM Road Map 2009
22-23 *NEW*	Montréal QC, Canada	ESRI Regional User Conference
28-29 *NEW*	Vancouver BC, Canada	ESRI Regional User Conference
September 29 - October 2 *NEW*	Anaheim CA, USA	URISA's 47th Annual Conference & Exposition
September 30 - October 1 *NEW*	Penticton BC, Canada	ESRI Regional User Conference
September 30 - October 2 *NEW*	Santa Catarina, Brazil	CoastGIS 2009 Contact: contato@coastgis.com.br

OCTOBER 2009

4-7	Campos Do Jordão, São Paulo, Brazil	Latin American Conference IALE 2009 "Landscape Ecology in Latin America: Challenges and Perspectives" Contact: Congress Secretariat and Information E-mail: ialebr2009@eventus.com.br
-----	--	---

Global Spatial Data Infrastructure Latin America and the Caribbean Newsletter

5-7	Westin Westminster CO, USA	Location Intelligence 2009
6-7 <i>*NEW*</i>	Toronto, Ontario Canada	ESRI Regional User Conference
8-25	Buenos Aires, Argentina	13th World Forestry Congress
15-16 <i>*NEW*</i>	Winnipeg MB, Canada	ESRI Regional User Conference
16-17 <i>*NEW*</i>	Miami FL, USA	Mapping Florida Communities: An Introduction to GIS & Community Analysis - One Day Workshops
18-21	San Antonio TX, USA	GEOINT 2009
20-21 <i>*NEW*</i>	Ottawa, Ontario, Canada	ESRI Regional User Conference
21 <i>*NEW*</i>	São Paulo, Brazil	InfoGEO and InfoGPS Seminar – Transportation management
23-24 <i>*NEW*</i>	Tallahassee FL, USA	Mapping Florida Communities: An Introduction to GIS & Community Analysis - One Day Workshops
28-29 <i>*NEW*</i>	Halifax NS, Canada	ESRI Regional User Conference

NOVEMBER 2009

3-4 <i>*NEW*</i>	St. John's NL, Canada	ESRI Regional User Conference
5 <i>*NEW*</i>	Orlando FL, USA	Mapping Florida Communities: An Introduction to GIS & Community Analysis - One Day Workshops
7 <i>*NEW*</i>	Jacksonville FL, USA	Mapping Florida Communities: An Introduction to GIS & Community Analysis - One Day Workshops
10-12 <i>*NEW*</i>	St. Petersburg FL, USA	2009 GIS in Transit Conference
14-19	San Antonio TX, USA	MAPPS/ASPRS Joint Specialty Conference
15-21	Santiago, Chile	ICC2009- 24th International Cartographic Conference 2009 http://www.icc2009.cl/

DECEMBER 2009

14-18	San Francisco, California, USA	Fall Meeting AGU Web: http://www.agu.org/meetings.shtml
--------------	-----------------------------------	---

Global Spatial Data Infrastructure Latin America and the Caribbean Newsletter

YEAR 2010

[Year 2010](#) January February [March](#) [April](#) May June [July](#) August September October November December

MARCH 2010

23-25 *NEW*	Tampa FL, USA	DistribuTECH 2010 Conference & Exhibition
------------------------------	---------------	---

APRIL 2010

18-22	Kansas City MO, USA	MAGIC 2010 Symposium
26-30	San Diego CA, USA	ASPRS Annual Conference E-mail: asprs@asprs.org

JULY 2010

26-30 *NEW*	Los Angeles CA, USA	SIGGRAPH 2010
------------------------------	---------------------	-------------------------------

[\(Back to Top\)](#)

Please mention SDI-LAC as source of information in any correspondence you may have on items in this issue

To subscribe to SDI-LAC, please do so online at:
<http://www.gsdi.org/newslist/gsdisubscribe.asp>
Nancy Aguirre, PAIGH, Editor cnaguirre@ipgh.org
Global Spatial Data Infrastructure Association,
<http://www.gsdi.org>

DISCLAIMER:
GSDI, PAIGH and the Editor will not be held liable for any errors, mistakes, misprints or incorrect information. Copyright © 2009. All rights reserved.