

# Global Spatial Data Infrastructure

## Latin America and the Caribbean Newsletter

SDI-LAC

May

2012

Vol. 9, No.5

Spatial Data Infrastructure-Latin America and the Caribbean (SDI-LAC) is a regional, monthly, and free, electronic newsletter from the [Global Spatial Data Infrastructure Association](#) (GSDI). It focuses on aspects related with Spatial Data Infrastructure, and on GIS, remote sensing, and data management issues, related with SDI in Latin America and the Caribbean. It aims to raise awareness, provide useful information to strengthen national SDI initiatives, and support synchronization of regional efforts.



Global Spatial Data Infrastructure

# GSDI

[GSDI Definition](#)

The [Pan-American Institute of Geography and History](#) (PAIGH), member organization of GSDI, and the [Permanent Committee on Geospatial Data Infrastructure for the Americas](#) (PC-IDEA), promote SDI development in the region. The newsletter is prepared by PAIGH for GSDI.

[Message from the Editor](#)

[Input to this Issue](#)

[Global and Regional SDI, News, Presentations](#)

[IGS News, Links, Publications](#)

[National SDI, News, Links, Presentations](#)

[Articles and Publications of the Month](#)

[Geospatial Research, Applications, Software, Data](#)

[Training and Funding Opportunities, Awards](#)

[Employment Opportunities](#)

[Other](#)

[Americas: Conferences, SDI Events \(Year 2012\) \(Year 2013\)](#)



## Message from the Editor

This SDI-LAC issue highlights the following updates: The **Global and Regional SDI** section comprises notes on GGC 2012 (GSDI 13) Conference; news about GeoSUR; and conferences taking place worldwide. The **IGS section** includes its call for membership. The **National SDI** segment informs on ETISIG-Catamarca Comprehensive Training Program in Argentina; BSDI and the Bahamas National GI Services (BNGIS); the 2nd Inter-agency Meeting of GeoBolivia Project; notes from ICDE, IDECA, and IDESC in Colombia; and news of SITEL and SNIEG in Mexico. **Articles and Publications** of the month comprise remarks on the book *on Data Transformation Methodology*; an article on *The relationship between landscape values and physical landscapes*; two papers of the FOSS4G 2011 Proceedings; the MarSIS Research Documents and Grenadines E-Library; IUCN Knowledge Products; IGN France International Study for Rehabilitation of Haiti's Geographic Reference Information; the Ecuadorian IGM's *IGEOGRAFICA* Journal; and the Community Based Adaptation to Climate Change Newsletter. **Geospatial Research and Applications** underline the LICJ of Jamaica's Spatial Analysis Services; Monitoring Biodiversity in Dutch Caribbean; Fire Assessment in Central America; Municipal Boundaries of El Salvador; CORS/GNSS Data of IGNTG, Panama; BioCAN and environmental information management in the Peruvian Amazon; the gvSIG

Chile Community; and release of PostGIS 2.0. The **Training and Funding Opportunities** section encompasses short course programs and workshops; and the OSGeo Education and Curriculum Project. Finally, several **Events taking place in the Americas** are listed in the last section.

Translation of SDI-LAC Portuguese is possible thanks to undergrad students from UNESP **Mateus de Barros Manhani** and **Esrom A. Rissate Júnior** and the cartographers engineers: **Eduardo Freitas Oliveira**, MSc in GIS, editor of the portal MundoGEO and magazine MundoGEO; **Silvane Paixão**, MSc in Geodetic Sciences and Geoinformation Technologies, PhD in Land Administration and Land Information Management; **Camila Bassetto Guedes**, advisor of the Operations Department of the Air Space Control (in Spanish DECEA), **Juan Carlos Girona Mamani**, a consultant in Geotechnology and IT solutions for Geoinformation, **Annette Pic**, MSc in Remote Sensing; **Edilce Figueiredo Burity**, MSc in Computer Systems and Technologist of IBGE/PE Geographic Information and Statistics. Under the general coordination of Silvane Paixão.

Back issues of the newsletter are at the GSDI website:

<http://www.gsdi.org/newsletters.asp>

Editor, **Nancy Aguirre**, Pan-American Institute of Geography and History (PAIGH), <http://www.ipgh.org>, [cnaguirre@ipgh.org](mailto:cnaguirre@ipgh.org)



# Global Spatial Data Infrastructure

## Latin America and the Caribbean Newsletter

### Input to this Issue

Frank Angulo	Academic Coordinator COVESIG 2012, Venezuela
Susana Barrera	Associate Professor, Department of Geography, National University, Bogota, Colombia
Santiago Borrero	Secretary General, Pan-American Institute of Geography and History, PAIGH, Mexico
Anete Berzina	Communications Specialist, European Union Representative Office, IUCN (International Union for Conservation of Nature), Brussels, Belgium
Julio Cesar Echeverria	Chairman Organizing Committee, 1st Latin American Congress on Surveying and Valuation, Bolivia
Guy Edwards	Research Fellow, Center for Environmental Studies, Brown University, USA
Ludo Engelen	SADL, KU Leuven, (Spatial Applications Division Leuven), Leuven, Belgium
Eduardo Freitas	Correspondent member of SDI-LAC Newsletter for Brazil
Kate Lance	SERVIR, NASA/USRA Coordinator, Huntsville, AL, USA
Aude Areste Lamendour	Communication and marketing Manager, IGN France International, France
Tim Magee	Executive Director, Center for Sustainable Development
Alberto Mendoza	Geographic Society of Colombia
Josh Newell	Assistant Professor, School of Natural Resources and Environment, University of Michigan, Ann Arbor, Michigan, USA
Oscar Dario Quintero	Expert on the Environment and Geoinformatics, University of Antioquia, Colombia, and Photogrammetry and Natural Sciences, Heinrich Heine Universität, Düsseldorf, Germany
Eric van Praag	Coordinator, GeoSUR Program
Danny Vandenbroucke	Secretary AGILE Council

[\(Back to top\)](#)

### Global and Regional SDI, News, Presentations



**GSDI**  
Global Spatial Data  
Infrastructure Association



#### GGC 2012 (GSDI 13)

The GSDI World Conference (GSDI 13), 14th GEOIDE Annual Scientific Conference, Canadian Geomatics Conference (CGC 2012) and the 7th 3D GeoInfo Conference will be jointly held as the Global Geospatial Conference 2012 to take place at the Québec City Convention Center from May 14-17, 2012.

The conference now has a full slate of corporate sponsors, the exhibit space is completely sold out, a full program of technical and plenary sessions with additional poster and lightning round sessions is on course and keynote speakers from across the globe are being announced.

See you in Quebec in May 2012!

Registration: <http://www.gsdi.org/gsdiconf/gsdi13/register.html>

Other useful links

Conference Website: <http://www.gsdi.org/gsdi13>

Program Overview: [http://www.gsdi.org/gsdiconf/gsdi13/prog\\_overview.html](http://www.gsdi.org/gsdiconf/gsdi13/prog_overview.html)



## Global Spatial Data Infrastructure Latin America and the Caribbean Newsletter

Detailed Program: [http://www.gsdi.org/gsdiconf/gsdi13/prog\\_details.html](http://www.gsdi.org/gsdiconf/gsdi13/prog_details.html)  
Conference Workshops: <http://www.gsdi.org/gsdiconf/gsdi13/workshops.html>  
Past GSDI World Conference Proceedings: <http://www.gsdi.org/gsdiConferences>  
Past open access Books affiliated with the conference: <http://www.gsdi.org/openaccessbooks> (two books, a proceedings and a journal edition are being produced from this conference)  
Other Important Dates: <http://www.gsdi.org/gsdiconf/gsdi13/dates.html>  
Hosts and Venue: [http://www.gsdi.org/gsdiconf/gsdi13/about\\_loc.html](http://www.gsdi.org/gsdiconf/gsdi13/about_loc.html)  
Social Events: <http://www.gsdi.org/gsdiconf/gsdi13/social.html>  
Contact: Atiyeh Ghanbari, Communications Officer, GEOIDE Network [atiyeh.ghanbari@geoide.ulaval.ca](mailto:atiyeh.ghanbari@geoide.ulaval.ca)

### *Presentation highlights*

Monday May 14

#### Global and Regional Initiatives and innovations in Spatial Enablement

Inside the 1:00 to 2:30 pm session, among the interesting regional presentations, are underscored the following for the LAC region:

- “Global Visions and Progress towards them in Sharing Geospatial Data and Tools” by Dr. Gilberto Camara, Director General, National Institute for Space Research (in Portuguese INPE), Sao Jose dos Campos, Brazil (Keynote Address by the Global Citizen Award Recipient); and
- “An America's Regional Perspective on Spatially Enabling Society” by Santiago Borerro, Secretary General, Pan-American Institute of Geography and History.

### *Sponsors for Global Geospatial Conference 2012*

The joint organizing committee of the Global Geospatial Conference 2012 is very grateful with the Gouvernement du Québec, Natural Resources Canada (GeoConnections), North West Geomatics Ltd., Boréal, Hydro-Québec, Intergraph, VIASAT GeoTechnologies and OpenGeo, who have joined TECTERRA and ESRI / ESRI Canada as sponsors for the Global Geospatial Conference 2012.

The Gold Sponsors of this event are the Gouvernement du Québec and Natural Resources Canada (GeoConnections). The Gouvernement du Québec considers essential the contribution of the geographic knowledge in the State's projects. It is a key player in the acquisition, the production, the use and the broadcasting of geographic information, and it developed expertise and know-how internationally recognized. GeoConnections, a national partnership initiative led by Natural Resources Canada supports the integration and use of the Canadian Geospatial Data Infrastructure (CGDI), an online resource that improves the sharing, access and use of open geospatial information.

North West Geomatics Ltd., Boréal, Hydro-Québec, Intergraph and VIASAT GeoTechnologies are Silver Sponsors for the 2012 conference. North West Geomatics Ltd. is dedicated to providing high-quality digital aerial imagery, LiDAR and related spatial data services to government agencies, the oil and gas industry, engineering firms, environmental consulting firms and other organizations. Boréal is internationally known for its exemplary solutions in management of social and environmental impacts of large international infrastructure projects such as those found in the mining and oil and gas industries. Hydro-Québec generates, transmits and distributes electricity, mainly using renewable energy sources, in particular hydroelectricity. Intergraph provides geospatially powered solutions to a wide range of industries. Now part of Intergraph, ERDAS provides integrated products for remote sensing, photogrammetry, and geospatial data management and delivery. Finally, VIASAT GeoTechnologies has been providing innovative geospatial solutions since 1991 such as Earth Observation services, remote sensing applied to geological surveys, infrastructure inventory, telecommunications network monitoring, and GNSS software.

Last but not least, let us highlight the collaboration of OpenGeo as a Bronze Sponsor of the event. OpenGeo, a leading open source web-based geospatial software company that brings together expert developers, trainers, and implementation specialists from around the world to produce the OpenGeo Suite, a fully supported open source geospatial stack consisting of PostGIS, GeoServer, OpenLayers, GeoExt and GeoWebCache.

# Global Spatial Data Infrastructure

## Latin America and the Caribbean Newsletter

We welcome our sponsors and thank them for their contribution in the success of the 2012 Conference! See <http://www.gsdi.org/gsdi13> and/or <http://www.geoide.ulaval.ca> for all the details.

### *Calls to Host GSDI 14 and GSDI 15*

The Global Spatial Data Infrastructure Association (<http://gsdi.org>) supports a major international geospatial conference every twelve to eighteen months. The conference is typically accomplished in affiliation with another regularly held national, regional or global geospatial conference and/or with the support of a major sponsoring organization or agency. The gathering is purposefully moved around and across the globe in order to optimally accomplish the Association's purpose of promoting international cooperation and collaboration in support of local, national and international spatial data infrastructure developments that allow nations to better address social, economic, and environmental issues of pressing importance. The locations and proceedings of the past twelve world conferences may be found at <http://www.gsdi.org/gsdiConferences>.

Ideally GSDI 14 should be held within the time frame of August through October of 2013 and GSDI 15 would be held approximately 12 to 18 months after that. The GSDI Association has invited expressions of interest to host either of these upcoming planned conferences. Affiliation with the GSDI World conference can bring international and global attention to a national or regional geospatial conference or Spatial Data Infrastructure initiatives, attract substantial international participation and sponsorship, and increase numbers of attendees overall.

Submit of brief statements of interest will be received on or before **1 May 2012**, and results of these calls will be announced during the conference in Quebec.

### **First Edition of GeoSUR Award: Deadline June 29**

Source: Eric van Praag by way of Santiago Borrero

**GeoSUR** La Red Geoespacial de América Latina y el Caribe

HOME SEARCH FOR DATA REGIONAL MAP VIEWER NEWS REGISTER CONTACT US

**PARTNER RESOURCES**

- Map Viewers
- WMS Services
- WFS Services
- CSW Services

**Map of the Month**

New geospatial service developed by the Inter-American Development Bank to visualize its project portfolio

**LATEST NEWS**

- GeoSUR launches new version of its Regional Portal
- The GeoSUR model is presented at the Eye on Earth Summit in Abu Dhabi
- Geosur obtains international award
- more...

**Friday June 29th** is the deadline for applying to the GeoSUR Regional Price to be awarded by CAF – The Latin American Development Bank and PAIGH – The Pan American Institute of Geography and History. Each year the award will be bestowed to two activities that stem from the relationship between participating institutions and the GeoSUR Program that stand out for their application of the available data and use of the services provided by the Program. Firstly, recognition will be given to applications of data or development of services resulting from the GeoSUR Program which are innovative for the region. A second acknowledgement will be awarded to the application or service that stands out for its relevance for complying with the objectives of the GeoSUR Program. Institutions or individuals in any country of Latin America and the Caribbean may participate. GeoSUR will announce the winners in the categories of “Innovation and Relevance” during the installation ceremony of the 5th GeoSUR Program Meeting, as part of the 45 Meeting of the Directing Council of the Pan-American Institute of Geography and History (PAIGH) that



## Global Spatial Data Infrastructure

### Latin America and the Caribbean Newsletter

will take place on November 2012, in Buenos Aires, Argentina, thus highlighting the initiatives of institutions and active members of GeoSUR. The guidelines to apply can also be found at: [http://www.ipgh.org/GeoSUR/Files/Bases\\_Premio-GeoSUR\\_vENG.pdf](http://www.ipgh.org/GeoSUR/Files/Bases_Premio-GeoSUR_vENG.pdf). Further information can be requested from [premios@ipgh.org](mailto:premios@ipgh.org) or [secretariageneral@ipgh.org](mailto:secretariageneral@ipgh.org).

#### Other News about GeoSUR

- With support from EROS it has been launched a new version of the GeoSUR Portal ([www.geosur.info](http://www.geosur.info)) with a revamped design and new functionality. Your comments are most welcomed. It is available in English and Spanish.
- The USGS/EROS Center completed the edition of the SRTM 30 meter DEM for Central America, Mexico and the Caribbean (filling voids, etc.). The data is available for on-line analysis at the GeoSUR Regional Map Service, together with some pre-process SRTM level-2 derivative datasets (slope, shaded relief, color shaded relief) that can be viewed or downloaded. We have available a video (English and Spanish) on the new Topographic Processing Service in the TECHNICAL DOCUMENTS section of the Portal.
- It has been completed the first hydropower potential assessment of Sao Paulo State (Brazil) using SRTM 30-meter and hydro data. A similar study in Peru is initiating.
- Five new agencies have joined GeoSUR in 2012. More than 55 agencies now participate in GeoSUR.
- GeoSUR will be presented at the GSDI Conference and the INSPIRE Conference this year.
- GeoSUR continues to work with UNEP and other global agencies, under the aegis of Eye on Earth, to incorporate GeoSUR to some Global Special Initiatives been planned for Eye on Earth.

The GeoSUR coordination invites you to visit the new Portal.

#### EUGISES 2012 - Registration Now Open

Source: EUGISES 2012 Organising Committee by way of Santiago Borrero  
The 8th European conference EUGISES "GIS-education, where are the boundaries?" will be held in Leuven, Belgium on September 6-9, 2012. Registration is open and early registration is possible until the 31st of May 2012. Sessions will cover the well-known EUGISES-issue of "Confirmed and new GIS-educational practices" applied in Europe and beyond. Among the various topics at stake, the question on "How important are the upcoming spatial data infrastructures?" is included. For more information please log on to: <http://ees.kuleuven.be/eugises12/index.html>.



#### FOSS4G 2012, Beijing

Source: <http://2012.foss4g.org/>



FOSS4G is the global conference focused on Free and Open Source Software for Geospatial. It is the OSGeo annual gathering and the place to be to learn on the latest geospatial technologies, since 2006. FOSS4G 2012 will be held on September 10-15 in the Beijing Conference Center, after successful past events in Denver, Barcelona, Sydney, Cape Town, Victoria and Lausanne. There are 24 workshops to choose from. Workshops are 3 hour hands-on experiences with participants following along with the instructor, working directly with the application under discussion. Computers will be provided. There is a separate fee for workshops. More information at: <http://2012.foss4g.org/>

[\(Back to top\)](#)

# Global Spatial Data Infrastructure

## Latin America and the Caribbean Newsletter

### IGS News, Links, Publications



International  
Geospatial Society



The International Geospatial Society (IGS) is the individual membership arm of the GSDI Association and seeks individuals for membership that have geospatial, SDI, GIS or related professional or specialist interests. The Society enhances communications globally among individuals that are actively involved in promoting, developing, or advancing spatial data infrastructure and related concepts. Check out the Benefits of Joining ([English](#)) ([Spanish](#))

[\(Back to top\)](#)

### National SDI, News, Links, Presentations

#### ARGENTINA

##### ETISIG: Catamarca-SDI Comprehensive Training Program, Argentina

Source: <http://www.etisig.catamarca.gov.ar/>

Is now available [here](#) the first half of ETISIG 2012- Technicians' Interagency Task Force on Geographic Information Systems-Comprehensive Training Program, for the Province of Catamarca, Argentina. With the establishment of ETISIG, it was set out the development of an innovative instance regarding traditional management practices, thus promoting and coordinating Geographic Information Systems (GIS)-use as fundamental government planning and decision-making tools. Currently, the team is comprised of thirty four (34) producer and user-mapping agencies, including local governments and Universities. Based on the above, the proposed ETISIG training program for the present year refers to theoretical and practical tool management as to ensure information quality, quantity, timeliness production, and delivery reliability.

#### BAHAMAS (BSDI)

##### [BSDI and the Bahamas National Geographic Information Services \(BNGIS\) Centre](#)

Source: <http://www.bahamas.gov.bs/>



The BNGIS Centre's vision and remit is to serve as the national technical focal point for the collection and management of geospatial data on the Commonwealth of the Bahamas; to advance a Program that provides a strategic national framework for long-term systematic access and exchange of geospatial data between governmental agencies and other information providers for improved planning, research and analysis; to improve GI literacy in the school system; and to equip managers, technicians and the wider GIS Community with GIS skills and technical support. The BNGIS Centre in collaboration with the Information Technology Unit, Ministry of Finance requested an automated solution that would efficiently deliver/serve up GIS related applications and data from a centralized system known as The Bahamas Spatial Data Infrastructure (BSDI). The Centre's existing BSDI technology includes a BSDI database server, BSDI Application Server and two existing servers to support core

# Global Spatial Data Infrastructure

## Latin America and the Caribbean Newsletter

BSDI Technology, and is founded on an ESRI Client-Server application model. A test pilot (the [Citrix Pilot Project](#)) was performed using pre-defined methodology and established best practices. The result of the test pilot was the implementation of the Citrix XenApp lab, which allowed BNGIS to demonstrate functionality of the applications in a Citrix environment, as well as determine the achievement of all the goals set forth and also make any technical and/or strategic recommendations. The BNGIS Centre is primarily responsible for the provision of GIS services, including training and technical support, to the Bahamian national community. Key Functions and Responsibilities of the BNGIS Centre include:

**GI Policy development:** Development of SDI system and programme that guides cooperation and coordination among governmental agencies and other groups in the collection, production, maintenance, sharing and use of spatial information.

**Central Repository of Information:** Development and maintenance of a Spatial Data Infrastructure (SDI) Library to serve as the central repository for most non-sensitive GIS data on The Bahamas.

**Spatial Data Clearing House:** Development of a GIS Website designed to provide a practical means to disseminate spatial data via Government Wide Area Network and the Internet; and establishment of discovery metadata catalogue, which will allow users to discover what spatial data is available as well as details on content, quality, condition, source, scale and other characteristics of spatial data in order to determine its usability

**Geographic Information (GI) Education:** Training of teachers and students in the use of GIS, Global Positioning Systems (GPS); Training trainers; and Developing lesson plans for integration into existing curriculum.

For more information on the Technical Support provided, the Centre's capacity, Training Program and Facilities, and Other BNGISC Related links, please log on to the [Center's website](#) or contact [bngisc@bahamas.gov.bs](mailto:bngisc@bahamas.gov.bs)

### BOLIVIA

#### [Second Inter-agency Meeting](#)

Source: <http://www.geo.gob.bo/>

Last April, 49 people representing 29 technical and scientific institutions in government, attended the meeting organized by the GeoBolivia project on "the Pluri-national State of Bolivia Interagency Coordinating Committee on Spatial Data Infrastructure (in Spanish IDE-EPB)-Metadata Generation and Composition." The GeoBolivia project coordination explained objectives, scope and activities of the project, considering the history of the building process for the country's geographic information use, availability, updating, and accessibility. The importance of producing a metadata catalog with information existing at the national level was also explained; this catalog will be useful both for the national SDI and other institutions, considering it will include



classified, systematized and orderly information. Regarding this national metadata catalog, it was announced that the GeoBolivia project by way of the Vice President of the Pluri-national State of Bolivia, will enforce all government institutions producing, using and processing geographic information, to timely create and deliver to GeoBolivia project their FGDC standard-base metadata catalog. Likewise, the establishment of an Interagency Coordinating Committee of the IDE-EPB was also discussed, proposing both its organizational structure, and the following technical committees: a) GI users/providers Committee; b) Scientific Panel; and c) Coordinating Commission for Territorial Autonomy. Detailed information on this meeting may be found [here](#).

### COLOMBIA

#### [ICDE: CTN 028 Thematic Group Began Activities](#)

Source: <http://www.icde.org.co/>

The CTN028 Technical Group for "Colombian Spatial Data Infrastructure (in Spanish ICDE) Web Map Server (WMS) Standard Interface Implementation Guide" resumed activities last March 2012. Likewise, the "Surveying Working Group" under coordination of the Colombian Society of Engineers (in Spanish SCI) began its planned activities for 2012.

# Global Spatial Data Infrastructure

## Latin America and the Caribbean Newsletter

### [IDECA: Geographic Web Services Workshop Results](#)

Source: <http://www.ideca.gov.co/>

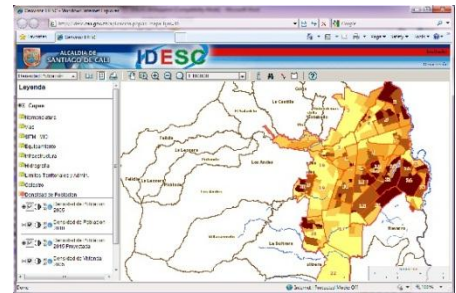
Kicking off Official Training and Knowledge Transfer Plan, scheduled for 2012, the Spatial Data Infrastructure for the Capital District (in Spanish IDECA) held its first workshop with participation of several district organizations. The workshop's objective was to introduce free and simple tools that allow fostering a culture of geographic information disclosure and provision. The workshop was attended by organizations from sectors of Government, Security and Coexistence, Mobility, Culture, Recreation and Sport, Planning, Finance, Habitat, and the Environment. A total of eight District organizations were trained.



### [IDESC: Population Density Map Now Available](#)

Source: <http://www.cali.gov.co/>

The Population Density Map by Census Tracts 2005 (together with 2010 and 2015 projections), and the 2005 Census Housing Density Map, are now available through the Spatial Data Infrastructure of Santiago de Cali Portal ([GeoVisor IDESC](#)). Maps were constructed based on the "Cali Population Projections by Neighborhood, Borough and Township 2006-2020" prepared by the Municipal Planning Department.

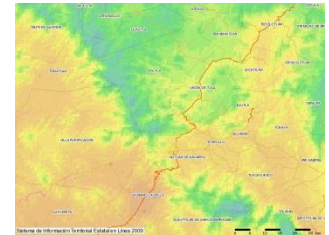


## MEXICO

### [Online-State Territorial Information System \(SITEL\), México](#)

Source: <http://postgis.org/documentation/casestudies/sitel/>

SITEL, a project hosting a spatial data infrastructure, allows various government agencies to share data to be included in their own projects as health, security, urban furniture or mobility. Today, they've integrated over 1,910 vector layers plus another 70+ raster files, provided through PostGIS and WMS/WFS/WCS services with Mapserver.



### [SNIEG: First 2012 Session of the SNIGMA Executive Committee](#)

Source: <http://www.snieg.mx/>

First 2012 session of the National Geographic and Environmental Information Subsystem (in Spanish SNIGMA) Executive Committee of the National Statistical and Geographic Information System (in Spanish SNIEG) was held last March. Main results achieved during 2011 as were the draft standards' progress, the Governing Board approval of National Interest Information, the system regulations and key indicators, as well as activities to be develop in 2012 were presented.



[\(Back to top\)](#)

## Articles and Publications of the Month

### Data Processing Methods

Source: Oscar Dario Quintero by way of Santiago Borrero

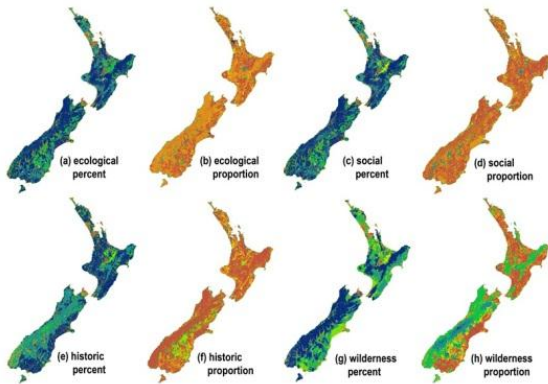
The book *Data Transformation Methodology* was launched. It contains details for local transformation parameter-calculation to be applied to data migration processes between reference systems incompatible with each other and higher resolution map scales. Thus, it becomes a complement to what has already been raised by the National Geographic Institute "Agustin Codazzi" (IGAC) for the national mapping of Colombia. This case study takes place in Colombia, but its applicability goes beyond these borders. <https://www.morebooks.de/?locale=ES>





### PPGIS Identifying Human-Landscape Relationships

Source: SDI Magazine <http://www.sdimag.com/>



Published on Thursday, 12 April 2012, Written by Roger Longhorn  
“Recent posts on the Open Forum on Participatory GIS and Technologies (PPGIS - [dgroups.org/groups/ppgis](http://dgroups.org/groups/ppgis)) have highlighted the subjective nature of maps and mapmaking. Consider recent efforts in mapmaking and the ‘truth’ these maps reveal ... or obscure. A Public Participation GIS (PPGIS) process was used in New Zealand wherein residents and visitors identified the locations of different landscape values (e.g. aesthetic, recreation, economic, ecological, social, historical, and wilderness values) in two regions on the South Island. The landscape values mapped in the process are perceptual, but grounded in local knowledge and human experience. Both significant spatial associations identified between perceived landscape values and features, and description of these relationships are found in this [article](#)”:

#### The relationship between landscape values and physical landscapes

Research article submitted to *Landscape and Urban Planning* by Greg Brown and Lars Brabyn

Excerpt from the Introduction: While the evolution of geospatial and internet technology has provided new opportunities to develop and implement practical methods for identifying landscape values, a deeper understanding of landscape value constructs and their relationship to physical landscapes has lagged use of the methods. Pragmatism and heuristics in identifying landscape values using geospatial technology have superseded knowledge of the spatial associations with landscape features. Descriptive and applied landscape research (quantifying —what values exist on the landscape) has been favoured over basic research (identifying —why the values exist in particular locations). This paper attempts to redress this deficiency by examining the relationships between landscape values and different landscape types at a regional scale. With empirical landscape value data collected from a Public Participation GIS (PPGIS) process in southern New Zealand, we identify and describe their spatial association with physical landscape components classified and described in the New Zealand Landscape Classification (NZLC) system (Brabyn, 2009). Following the results, we discuss the theoretical and practical implications of the findings for future research. [Full article may be found at: [http://www.landscapemap2.org/publications/NZ\\_value\\_relationships.pdf](http://www.landscapemap2.org/publications/NZ_value_relationships.pdf)]

You can view the New Zealand map images for aesthetic, recreation, and economic landscape values [here](#). You can view NZ map images for ecological, social, historic, and wilderness value [here](#). You can view these social landscape value maps for New Zealand at: <http://www.landscapemap2.org/social.html>. Visit the Forum web site [here](#). [Source: Greg Brown contribution to PPGIS forum].

### **An Innovative Web Processing Services Based GIS Architecture for Global Biogeographic Analyses of Species Distributions**

By Jeffery A. Cavner, Aimee M. Stewart, Charles J. Grady, James H. Beach. *OSGeo Journal*, Volume 10 - FOSS4G 2011 Proceedings

Abstract: Spatial patterns and properties of species richness in natural communities are of keen interest to biogeographers and conservation biologists as they describe key features of the location and distribution of the earth's biological diversity, but species richness tools are scattered across specialty software and are underrepresented in distributed approaches for GIS for work with large datasets. We describe an ongoing development effort for producing macroecology and biogeography tools dealing with large species presence data structures using the Web Processing Service (WPS) specification and Quantum GIS (QGIS) as a WPS client. The creation of species presence/absence matrices is one approach for linking range size and richness patterns and these spatial patterns are well suited for GIS analysis. This paper presents our efforts to date on the development of the Lifemapper Range and Diversity (LmRAD) analysis suite for Lifemapper and on its potential contribution to global biodiversity research and conservation. LmRAD is being engineered as a job based infrastructure that is portable across compute environments for exposing macroecology algorithms for biodiversity calculations as WPS services, a client library for GIS and Scientific Workflow environment software that is tailored for communication using WPS and other Open Geospatial Consortium (OGC) standards, and a client plug-in for QGIS. The practical importance of bringing a standardized spatial data processing standard into a distributed GIS environment for macroecology is that larger institutional computer resources can be brought to bear on large problems at vast scales, i.e. continental to global extents at high resolutions for thousands of



# Global Spatial Data Infrastructure

## Latin America and the Caribbean Newsletter

species. Additionally the decoupled nature of the Web Services approach can allow scientists to mix and match tools in user defined workflows where metadata can be produced that allow experiment repeatability. [Full text may be found at: <http://journal.osgeo.org/index.php/journal/article/view/195/161>]

### **Implementation, Challenges and Future Directions of Integrating Services from the GIS and Decision Science Domains; a Case of Distributed Spatial Multi-Criteria Evaluation**

By Luc Boerboom. *OSGeo Journal*, Volume 10 - FOSS4G 2011 Proceedings

**Abstract:** We are implementing an open source project for spatial decision making called Distributed Spatial Multi-Criteria Evaluation (DSMCE) under an EU project for inter-regional development on Forestry and Climate Change Adaptation (ForeStClim). In this paper, we first describe what DSMCE is and what it does. We have designed an extensible architecture for integrating services of two domains, respectively the GIS and Decision Sciences domain. Thereby we delegate domain expertise to available implementations. We use the Service Oriented Architecture (SOA) paradigm to build our DSMCE service and application. Integration is implemented by the use of open specifications and protocols coming from these domains. DSMCE is not only extensible in terms of the external services it uses, it also is extensible as an application because it is developed with OSGi technology which brings advanced modularity. Second we share observations about implementation challenges we have addressed. These challenges are related to the design of integration of the two domains, the ability of specifications to address real implementation problems, and the reliability and quality of available open source tools. These lead us to conclusions about the solutions we had to implement. Third and finally we give an overview of future directions. Some of these topics relate to the spatial domain, e.g. the use of Web Processing Services (WPS) for pre and post processing around decision analysis, others to the decision sciences domain, e.g. the integration of other non-spatial data sources and services, or collaborative decision making. [Full PDF Text may be found at: <http://journal.osgeo.org/index.php/journal/article/view/199/163>]

### **MarSIS Research Documents and Grenadines E-Library**

Source: <http://www.grenadinesmarsis.com/>

MarSIS (Marine Resource and Space Use Information System for the Grenadine Islands) Research Documents including the [Brief MarSIS Research Summary](#) and the Grenadines Marine Zoning Project Update February 2012 are available at the Files and Maps section of the [Grenadines MarSIS website](#). There is a lot of information available on the Grenadines Islands, which range from Isla Ronde in the South to Bequia in the North. This information covers many aspects of the Grenadines such as the economic, social and environmental issues which affect its people. However, the enormous potential of these studies, as a collection, has not been realized. The output has been made available at different times and sources and varies greatly in its quality and scope. The [Annotated Bibliographic Information on the Grenadine Islands](#) document provides an inventory and review of some of the environmental, social and economic information that can be found on the Grenadines. It is hoped that it will be useful to Non Governmental Organizations (NGOs), community members, and any other parties with any active interest in the area. This inventory is not considered to be complete as it has been based on what has become available, rather than on a systematic bibliographic search.

### **IUCN Knowledge Products - Including Island-Related Case Studies and Use**

Source: Anete Berzina

You might find interesting reading a new brochure that describes in one place existing and planned IUCN (International Union for Conservation of Nature) Knowledge Products that are relevant to islands as much as to other places. See the brochure at <http://data.iucn.org/dbtw-wpd/edocs/2012-015.pdf>



### **IGN France International Presented the Results of its Preliminary Study for the Rehabilitation of Haiti's Geographic Reference Information**

Source: Aude Areste Lamendour

The geographic data acquired in the emergency situation following the earthquake that ravaged Haiti in January of 2010 have unfortunately not been able to be put to optimal use... France financed a preliminary study aiming to operationally rehabilitate the Haitian National Centre of Geo-Spatial Information (in Spanish CNIGS) and to reconstruct the country's geographic reference information. Please note that this preliminary study was performed using FASEP (Fund for the study and aid of the private sector) funding, French financing that aims to support the implantation and

# Global Spatial Data Infrastructure

## Latin America and the Caribbean Newsletter

development of small and medium-sized French companies abroad through a fund that guarantees investments against economic risks. Contact: Aude Areste Lamendour [alamendour@ignfi.fr](mailto:alamendour@ignfi.fr). [Read the press release in English.](#)

### Ecuadorian IGM Technical Journal, 3rd Edition

Source: <http://www.igm.gob.ec/>

*IGEOGRAFICA*, the Ecuadorian IGM's quarterly Technical Journal launched its third edition. Among the comprised papers please find an article on "Ecuadorian Spatial Data Infrastructure (in Spanish IEDG) provides Ecuadorians its first fruits" by Miguel Ruano. The Journal is available [here](http://www.igm.gob.ec/site/images/publicaciones/2012/revista/index.html). <http://www.igm.gob.ec/site/images/publicaciones/2012/revista/index.html>



### Community Based Adaptation (CBA) to Climate Change Newsletter, Center for Sustainable Development

Source: Tim Magee

This special issue of CBA newsletter features a selection of hands-on field guides for addressing Small Island Developing States (SIDS) CBA challenges. [Link: April Newsletter:](#)

[\(Back to top\)](#)

## Geospatial Research, Applications, Software, Data

### Land Information Council of Jamaica Spatial Analysis Services

Source: <http://www.licj.org.jm/>

#### IKONOS

A number of maps have also been created for students' research projects with the use of the IKONOS images and 1 in 50,000 maps using information collected in the field. The map is an example which shows the inundated area of Montego Bay caused by the flooding of the north gully



#### Land Use

Map of Agricultural lands across Jamaica, based on the landuse dataset from the Rural Physical Planning Division. The agricultural lands have been grouped according to type crop being cultivated.



The Ministry of Agriculture/ Land Information Council of Jamaica (LICJ) through the Spatial Data Management Division (SDMD) provides GIS technical support for the preparation of maps and undertakes various types of spatial analysis for both private and government entities. Examples include a number of maps that have been created for students' research projects with the use of IKONOS images; and a Map of Agricultural lands across Jamaica, based on the landuse dataset from the Rural Physical Planning Division. The agricultural lands have been grouped according to type crop being cultivated. The division also undertakes several projects that involve the application of spatial analysis techniques for Pest Infestation, Natural Hazards, and Green House Site

Location. Detailed information may be found [here](#). For further information, please contact [sdmd@moa.gov.jm](mailto:sdmd@moa.gov.jm)

### Monitoring Biodiversity in Dutch Caribbean

Source: Anete Berzina



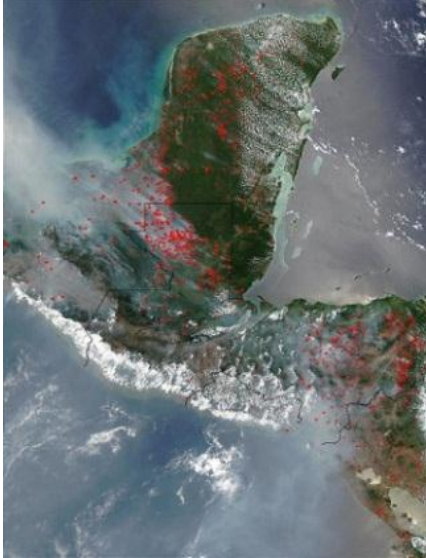
Those in the Caribbean might find interesting a recent post by DCNA (Dutch Caribbean Nature Alliance) on a proposed [biodiversity monitoring programme](http://dcnanature.wordpress.com/2012/04/02/strategic-plan-for-monitoring-biodiversity-in-all-dutch-caribbean-islands/) that would target habitats and priority species living inside and out of the protected areas of all six Dutch islands: <http://dcnanature.wordpress.com/2012/04/02/strategic-plan-for-monitoring-biodiversity-in-all-dutch-caribbean-islands/>

# Global Spatial Data Infrastructure

## Latin America and the Caribbean Newsletter

### Regional Assessment: Fires in Central America, January-March 2012

Source: CATHALAC



The team at CATHALAC, in the context of SERVIR, is pleased to share the following analysis regarding the fires which have occurred in Central America over the past three months:

[http://www.servir.net/puntos\\_de\\_calor\\_detectados\\_entre\\_enero\\_y\\_marzo\\_del\\_2012\\_centroam%C3%A9rica](http://www.servir.net/puntos_de_calor_detectados_entre_enero_y_marzo_del_2012_centroam%C3%A9rica)

In summary, the analysis –based on satellite data from the MODIS sensor and processed via the FIRMS system– indicates the following: Even though dry season has still not yet come to a close, 2012 is already the fourth most intense year in terms of the occurrence of fires in the last ten years (after the 2003, 2005, and 2011 fire seasons). Up to March 31, 2012, some 5,533 fires were detected across the region (80 in Belize, 2,014 in Guatemala, 355 in El Salvador, 639 in Honduras, 844 in Nicaragua, 692 in Costa Rica, and 819 in Panama). 13.36% of the fires (some 739 fires) occurred within protected areas, affecting mainly Guatemala (63.33%) and Nicaragua (15.16%). Of the fires that occurred, 31% of the fires correspond to agricultural fires, while 17% were forest fires, and 52% occurred in pastureland, scrub, and savannas. The Petén Department of Guatemala has historically been the administrative unit in Central America with the largest proportion of hotspots 27%, ~29,995 hotspots detected, in the ten year period spanning 2001-2010.

### [CNR Delivers Municipal Boundaries, El Salvador](http://www.cnr.gob.sv)

Source: <http://www.cnr.gob.sv>



## Centro Nacional de Registros



The National Registration Center recently delivered 36 minutes and graphics of municipal boundaries approved by the Legislature to various mayors of municipalities in the departments of Sonsonate, La Paz, Ahuachapán, Santa Ana, Usulután, San Salvador and La Libertad. Municipal boundaries are considered important because of the various roles played by these both for municipalities and citizens who live within them. During the launching ceremony of these boundaries and graphs an original copy of these materials was given to the Ministry of Interior for their appropriate back-up and preservation. Meanwhile, representatives of different municipalities said that investment in the development of each of its municipalities will be adequately addressed, as specifically as possible and not in general, thus avoiding confrontations between different councilors.

### [Rinex Data from CORS/GNSS Permanent Stations of IGNTG are Published on the Web, Panama](http://ignpanama.anati.gob.pa/)

source: <http://ignpanama.anati.gob.pa/>

Since March 1<sup>st</sup>, 2012, users of information from the permanent stations CORS / GNSS of the National Geographic Institute "Tommy Guardia" (IGNTG) IGN1, AZUE, DAVI and DARI, located in the city of Panama, Chitre, David and Santa Fe in Darien, respectively, may download files (rinex format) through the institute's website. This may provide satellite data more quickly and efficiently, which is required for accurate georeferencing of the many projects undertaken nationwide.

# Global Spatial Data Infrastructure

## Latin America and the Caribbean Newsletter

### [Peruvian Amazon: Andean Community to Strengthen Environmental Information](#)

Source: Kate Lance

The Andean Community (in Spanish CAN) Secretariat signed an agreement with the Research Institute of the Peruvian Amazon (in Spanish IAP) to strengthen the management of environmental information in the Peruvian Amazon. The CAN-IIAP agreement is part of the Community's biodiversity programme, BioCAN, and is intended to play a central role in building BioCAN's Amazon Regional Information Platform (in Spanish PIRAA). Under the agreement, IAP, with guidance from Peru's Environment Ministry, will seek to reinforce

management of Amazonian biodiversity information, strengthen environmental and geographic information, develop new information products, provide training activities and improve related technological infrastructure.



### [gvSIG Association Announces Establishment of the gvSIG Chile Community](#)

Source: Eduardo Freitas

gvSIG Association announces the emergence of a gvSIG Community group in Chile, with support from the OpenMaps enterprise in Chile (contributor to the gvSIG Association), in conjunction with the Universidad Mayor. This group has been meeting virtually and in person a few months ago, and it is time to expand this endeavor so that any person in Chile interested on gvSIG and its various tools may join this initiative. In this sense it has created a space for open communication, thus adding to this list and wide range of Latin American gvSIG local communities. To write messages on this list is necessary to contact [gvSIG\\_chile@lists.foss4gchile.org](mailto:gvSIG_chile@lists.foss4gchile.org)

### [PostGIS 2.0 Released](#)

Source: The PostGIS development team ; <http://www.osgeo.org/node/1275>



<http://postgis.org/download/postgis-2.0.0.tar.gz>. PostGIS adds support for geographic objects to the PostgreSQL object-relational database. In effect, PostGIS "spatially enables" the PostgreSQL server, allowing it to be used as a backend spatial database for Geographic Information Systems (GIS), much like ESRI's SDE or Oracle's Spatial extension. PostGIS follows the OpenGIS "Simple Features Specification for SQL" and has been certified as compliant with the "Types and Functions" profile. PostGIS is released under the [GNU General Public License](#). The development process for 2.0 (26 Months in the Making) has resulted in a release with a number of exciting new features:

- Raster data and raster/vector analysis in the database
- Topological models to handle objects with shared boundaries
- PostgreSQL typmod integration, for an automagical geometry\_columns table
- 3D and 4D indexing
- Index-based high performance nearest-neighbour searching
- Many more vector functions
- Integration with the PostgreSQL 9.1 extension system
- Improved commandline shapefile loader/dumper
- Multi-file import support in the shapefile GUI
- Multi-table export support in the shapefile GUI
- A geo-coder optimized for free US Census TIGER (2010) data

[\(Back to top\)](#)

# Global Spatial Data Infrastructure

## Latin America and the Caribbean Newsletter

### Training and Funding Opportunities, Awards

#### Participatory Cartographies

Source: Susana Barrera



This course aims to introduce basic concepts on participatory GIS and participatory cartography through specific applications. Among others, the course seeks to provide participants with both a theoretical and methodological 'tool box' for conducting alternative geographic space-representation and analysis approaches. The above will be accomplished based on experiences across multiple projects. The course begins on May 30 with length of 42 hours. For more information please log on to: <http://www.humanas.unal.edu.co/peec/cursos-y-diplomados-2012-1/cartografias-participativas-y-sig-p/>

#### Short Training courses in SIMGEO INDE, Brazil

Fuente: <http://www.inde.gov.br/>



### Simpósio Brasileiro de Ciências Geodésicas e Tecnologias da Geoinformação

06 a 09 maio 2012

Geotecnologias para o Planejamento e a Gestão Eficiente do Território

The National Commission for Cartography (CONCAR) in partnership with the organization from the IV Brazilian Symposium on Geodetic Sciences and Geoinformation Technology (SIMGEO) will promote three short courses to train managers, users, producers, experts, teachers, and researchers interested in knowledge, application concept and other issues relating to the National Geospatial Data Infrastructure (NSDI). The SIMGEO will be held from 6 to 9 May 2012, at Golden Palace Hotel Recife in Recife - PE. Brazil.

It will be offered the following courses:

- NSDI (National Spatial Data Infrastructure) introduction and concepts

Instructor: Moema José de Carvalho Augusto – IBGE

- INDE: Introduction to Geoservices

Instructor: Wesley Silva Fernandes - IBGE

- MGB Profile: The INDE Metadata Standard

Instructor: Rafael Lopes da Silva - IBGE

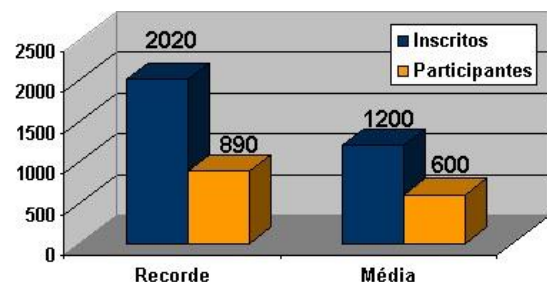
More information at: <http://www.ufpe.br/ivsimgeo/>

For the Syllabus please click here <http://www.inde.gov.br/wp-content/uploads/2012/04/Minicursos-INDE.pdf>

#### MundoGEO Online Seminars

Source: <http://mundogeo.com/>

MundoGEO has designed a series of online seminars (webinars) for educational and informational purposes about geotechnology trends and cases. Distance learning seminars are aligned with global demands for professional content in a short time, without offsets, and are both mediators of speakers and of participants. The webinar sponsors foster their brands and get instant feedback from the public. Conduction of webinar implies an investment in developing an invitation, and the promotion, support for the preparation of the lecture, coordination of the event, and



# Global Spatial Data Infrastructure

## Latin America and the Caribbean Newsletter

reporting on the hearing. In 2011, average MundoGEO webinars had 1,200 enrolled and 600 participants per event. On November 22nd two records were broken with 2,020 people enrolled and 890 participants. Previous webinars took place in: [2012](#), [2011](#), [2010](#) and [2009](#).

### [MundoGEO#Connect Award recognizes geospatial market most important professionals, institutions and enterprises](#)

Source: Eduardo Freitas

MundoGEO#Connect LatinAmerica 2012 (<http://mundogeoconnect.com/2012/en>), the largest event of geospatial industry in Latin America taking place on May 29<sup>th</sup> through 31<sup>st</sup>, at the Frei Caneca Convention Center in Sao Paulo (SP), Brazil, will recognize professionals, institutions, companies and brands that catch the eye in the geotechnology industry. MundoGEO#Connect 2012 Award, sponsored by Garmin, is now in its final stage. At first, the community voted to choose who should be in the Top 5 in each category. Then, please vote to elect who should take the big prize of the geotechnology industry in every category. Voting ends on May 14<sup>th</sup>. The award presentation ceremony takes place on May 29, during the MundoGEO#Connect LatinAmerica 2012 event. We have high expectation for this ceremony since many companies, institutions and professionals, have been participating through campaigns to achieve a place among the five finalists on these categories. See instructions on how to vote at: <http://mundogeoconnect.com/2012/menu-superior/premio/vote-nos-finalistas/>.

### [The OSGeo Education and Curriculum Project](#)

Source: <http://www.osgeo.org/education>



This component of OSGeo is focused on building a repository of educational material related to geoscience in general, and open source geospatial software specifically. In the 2007 FOSS4Geo conference, it became apparent that there is broad interest to coordinate, collaborate and share educational materials. Moreover, it's clear that content authors -- all over the world -- are ready and willing to share their content with others. The OSGeo educational effort is working to organize and coordinate these interests and efforts. Detailed information on how to join this initiative is found at: <http://www.osgeo.org/education>. You may also check out the older [Searchable Database](#) of Educational Material.

### **Workshop Sensing a Changing World**

Source: Danny Vandenbroucke by way of Ludo Engelen and Santiago Borrero



To be held on May 9-11, 2012, Wageningen University, The Netherlands. The main goal of this second edition, which is organized with support of the MODAP project (<http://www.modap.org>), is to present and explore the current state-of-the-art developments, impacts and research challenges for sensor web technology in the context of environmental monitoring and analyses. During the workshop key-note speakers provide an overview state-of-the-art developments, impact and challenges for sensing the world in different application fields: urban, water, environment, transportation, agriculture, tourism etc. We will publish a selection of the presented work in a special issue of a selected journal (to be announced). For further information, please contact Arend Ligtenberg ([Arend.Ligtenberg@wur.nl](mailto:Arend.Ligtenberg@wur.nl)), Lammert Kooistra ([Lammert.Kooistra@wur.nl](mailto:Lammert.Kooistra@wur.nl)), or Arnold Bregt ([Arnold.Bregt@wur.nl](mailto:Arnold.Bregt@wur.nl)). Check [www.grs.wur.nl/UK/workshops/scw2](http://www.grs.wur.nl/UK/workshops/scw2) for details.

[\(Back to top\)](#)

# Global Spatial Data Infrastructure

## Latin America and the Caribbean Newsletter

### Employment Opportunities

#### [OGC Director of Services – Americas](#)

Source: <http://www.opengeospatial.org/> by way of Eduardo Freitas



The Open Geospatial Consortium (OGC) seeks to hire a Director of Services - Americas. This full time position is responsible for working with OGC's membership based in the Americas to explain / familiarize members with benefits and services that come with OGC membership, and to act as the focal point for OGC related activities planned and convened in the region. This position is responsible for member inquiries and suggestions for improved OGC services / support in the region. Furthermore this position is responsible for membership recruitment as well as being the primary contact point for non OGC member inquiries from the Americas. Detailed information [here](#).

#### **Post-doc Opportunity: Research Associate or Faculty Research Assistant (FRA) – Remote Sensing Specialist**

Source: Josh Newell

The Department of Geographical Sciences at the University of Maryland is seeking a remote sensing specialist with strong programming skills and a background in remote sensing of land cover and vegetation dynamics. The focus of this position is on developing/improving algorithms to monitor and detect wetland changes combining multiple types of remotely sensed data (e.g. Landsat time series data/SAR/LiDAR) at various spatial and temporal scales. The candidate will also synthesize a number of geospatial and field data to calibrate/validate the map products, help quantify the capacity of wetlands to improve water quality, and assess the vulnerability, impact, and adaptation (VIA) of wetlands under future climate change, land cover change, and other adaptation/mitigation scenarios. This research is in direct response to a call for improved information to support decision making at the local, state, and regional levels and the candidate will interact with environmental managers within the Chesapeake Bay Watershed. We specifically seek candidates with the ability to: 1) manage large geospatial datasets, 2) process and integrate regional scale remotely sensed datasets, 3) statistically assess various mapping and modeling outputs, facilitate interactions between research collaborators to meet project goals, and 4) write and publish peer-reviewed journal papers. For further information, please contact Dr. In-Young Yeo, Assistant Professor, Department of Geographical Sciences, University of Maryland, College Park. [Email is [iyeo@umd.edu](mailto:iyeo@umd.edu)]. For best consideration, submit letter of application and a resume with the names and telephone numbers of three references to <http://jobs.umd.edu/applicants/Central?quickFind=54212> by **May 15, 2012**. Search will continue until suitable candidate is appointed. Further information on this position and on academic and research programs of the Department may be obtained from the address above and can be found at <http://www.geog.umd.edu>.

[\(Back to top\)](#)

### Other

#### [Grenada to hold National Strategy for the Development of Statistics Consultation](#)

Source: <http://www.gov.gd/>



The Ministry of Finance, Planning, Economy, Cooperatives and Energy is currently preparing to design a National Strategy for the Development of Statistics (NSDS) in Grenada. An NSDS will enable Grenada to build a reliable statistical system that produces the data necessary to design, implement, and monitor national development policies and programmes. It will also help Grenada to meet regional and international commitments with respect to statistics.



# Global Spatial Data Infrastructure

## Latin America and the Caribbean Newsletter

As a first stage in the Development of the NSDS, a national consultation took place on Tuesday April 24th, 2012 at the Grenada Trade Centre Annex. This consultation brought key stakeholders together to assess the National Statistical System by identifying the strengths, weaknesses, opportunities and threats that currently exist, and through this, produce a road map which will see Grenada having a highly improved statistical system that produces good statistics that is responsive to the current and future needs of users locally, regionally and internationally. The CARICOM Secretariat and the Partnership in Statistics for Development in the 21st Century (PARIS21) are providing technical support to Grenada in this process.

### [United Nations-backed Climate Change Project for Grenada](#)

Source: <http://www.gov.gd/>

The Ministry of Environment, Foreign Trade and Export Development (MOEFTE), in collaboration with the [United Nations Division for Sustainable Development \(UNSD\)](#), is implementing a project titled, "Integrating Climate Change into National Sustainable Development Strategies and Plans in Latin America and the Caribbean". It's a pilot project to be run in three regional countries, with Grenada as the only Caribbean nation. The others are Guatemala in Central America and Bolivia in South America. Under the project, three critical areas have been identified for adaptation to potential impacts from climate change in Grenada. They are management of water resources; renewable energy options for use after natural disasters; and coastal ecosystems' restoration and management. In addition, a selection has been made for an all-encompassing project to build a "Green Economy for Sustainable Development in Carriacou and Petite Martinique." Study available at [http://www.un.org/esa/sustdev/csd/csd16/documents/bp12\\_2008.pdf](http://www.un.org/esa/sustdev/csd/csd16/documents/bp12_2008.pdf)

### **Shaping the Durban Platform: Latin America and the Caribbean in a future High Ambition Deal**

Source: Guy Edwards

Key messages: LAC countries supporting high ambition at the international climate negotiations need to continue to shape a more ambitious climate narrative by acting together, domestically and internationally, and strengthening existing work with experts on bold action both within and outside the COPs. LAC countries need to continue to explore how best to advance national conversations linking climate change issues such as mitigation and resilience plans to national interests and potential losses in food security, infrastructure and trade. [Full text may be found at: [http://www.intercambioclimatico.com/wp-content/uploads/Shaping-Durban-Platform\\_Final-April\\_2012.pdf](http://www.intercambioclimatico.com/wp-content/uploads/Shaping-Durban-Platform_Final-April_2012.pdf)]

[\(Back to top\)](#)

## Americas: Conferences, SDI Events

### **International Seminar on Sustainable Territorial Ordering and Development in Latin America**

Source: Alberto Mendoza by way of Santiago Borrero  
The Graduate Program in Geography (in Spanish EPG), UPTC-IGAC agreement, organizes the International Workshop on Sustainable Territorial Ordering and Development in Latin America on May 16-18 in Bogota, Colombia. International experts from Spain, Portugal, Mexico, Argentina, Venezuela, Cuba and Colombia will attend this event. Because territorial ordering and management is central to the appropriate and harmonious natural heritage-use worldwide, and to ensure the permanence of life, the Geographic Society of Colombia is pleased to share this invitation. Contact: [epgseminario.internacional@uptc.edu.co](mailto:epgseminario.internacional@uptc.edu.co)

### **[14th Latin American Geographers Meeting \(EGAL\)](#)**

Source: Susanna Barrera



The Latin American Geographers Meeting (EGAL) is held every two years since 1987. The XIV EGAL 2013 will be held in Lima, Peru, organized by the Association of Geographers of Peru (in Spanish CGP) and the National Committee of the Peru International Geographical Union (IGU - PERU), with support of its academic community in general and other public and private institutions. It will accept a maximum of two papers per author, taking into account both individual and group presentations. Milton Santos Award of Merit Geographic: As with any event of the Latin American Geographers meetings (EGAL), a panel of geographers from different Latin American countries will issued the "Geographic Merit Award Milton Santos," to outstanding academic achievements in the field of Geography, a transcendent work recognized in Latin America, and participation in EGAL meetings. Contact: [egal2013@gmail.com](mailto:egal2013@gmail.com).

Detailed information may be found at the EGAL website: [www.egal2013.pe](http://www.egal2013.pe)

# Global Spatial Data Infrastructure

## Latin America and the Caribbean Newsletter

### [ESRI National Users Conference \(ENVI 2012\), Venezuela](#)

Source: ESRI Venezuela



ESRI Venezuela is pleased to invite you to the National ESRI Users Conference ENVI-2012, which will take place in Caracas, Venezuela on June 14. To register please apply by email for the Registration Form that contains the necessary information required at: [conferencia@esriven.com](mailto:conferencia@esriven.com). For more information please visit: [www.esriven.com](http://www.esriven.com).

### [1st Latin American Congress on Surveying and Valuation](#)

Source: Julio Cesar Echeverria



GMS Geomatic & Mapping Systems Inc., T&T-REDSUR, and the Military School of Engineering (EMI), invites to the "1st Latin American Congress on Cadastre" to be held on June 14-15 this year in the city of Santa Cruz - Bolivia. Previous to this event on June from 11-13, it will be held the classroom course on Cadastral Engineering (Limited space). For more information about this event please visit [www.tytreddsur.org/congreso.php](http://www.tytreddsur.org/congreso.php). To register for the

conference please log on to: <http://tytreddsur.org/preinscripcion.php>. Contact: [congreso@tytreddsur.org](mailto:congreso@tytreddsur.org)

### [2nd Venezuelan GIS Congress COVESIG 2012](#)

Source: Frank Angulo



The "Second Venezuelan Congress of Geographic Information Systems COVESIG 2012" will be held on October 23-25, 2012 at the Faculty of Forestry and Environmental Sciences at the University of Los Andes in Merida, Venezuela. This event will involve students, professionals and individuals from different Departments, Higher Education Institutes, and other national and international organizations. The main objective of this conference is to promote and develop skills that encourage friendly academic, technical and social exchange between all persons interested in the application of basic principles on Geographic Information Systems (GIS). During this event we will discuss topics such as GIS and the environment, Geomatics, Natural Hazards, Remote Sensing, Land Management, GIS in municipalities, GIS and population and quality of life, GIS and telecommunications, Projected GIS Management and Administration, GI Infrastructure, Cadastral GIS, free Geomatics. Detailed information may be found on the web portal at: <http://www.forest.ula.ve/forest/aseciamtematicos.htm>

[\(Back to top\)](#)

## YEAR 2012

[Year 2012](#) January February March April [May](#) [June](#) [July](#) [August](#) [September](#) [October](#) [November](#) [December](#)  
[Year 2013](#) January [February](#) March [April](#) May June [July](#) August September October November December

MAY 2012		
2-5	Villa Carlos Paz, Córdoba, Argentina	<a href="#">11<sup>th</sup> National and 8<sup>th</sup> Latin American Congress on Surveying</a>
6-9 <b>*NEW*</b>	Recife, Brazil	<a href="#">IV SIMGEO: Brazilian Symposium on Geodetic Science and Geoinformation Technology</a>
7-9	Rio de Janeiro RJ, Brazil	<a href="#">GEOBIA 2012: Geographic Object-Based Image Analysis</a> Contact: <a href="mailto:geobia2012@dpi.inpe.br">geobia2012@dpi.inpe.br</a>
7-9	Calgary Alberta, Canada	<a href="#">Conference GeoAlberta 2012</a>
7-11 <b>*NEW*</b>	Bogotá, Colombia	<a href="#">XII Geocritics International Symposium - "Building Independence and National States: Power, 'Territorization' and Socialization, nineteenth and twentieth centuries"</a>
7-11 <b>*NEW*</b>	Bryce Canyon UT, USA	<a href="#">2012 UGIC Conference</a>
8-9	Bloomington IN, USA	<a href="#">2012 Indiana GIS Conference</a>
8-10	New Orleans LA, USA	<a href="#">CTIA Wireless 2012</a>
9	Ontario, Canada	<a href="#">Be Spatial 2012</a>

# Global Spatial Data Infrastructure

## Latin America and the Caribbean Newsletter

9 <b>*NEW*</b>	Murfreesboro TN, USA	<a href="#">URISA Certified Workshop, Addresses and IS/GIS Implementation: Key to GIS Success</a>
14-17	Rio Claro-SP, Brazil	<a href="#">Brazilian Congress About Natural Disasters</a>
14-17	Quebec City, Canada	<a href="#">GSDI-13: Spatially Enabling Government, Industry and Citizens</a>
14-18	Havana, Cuba	<a href="#">V Latin American Congress on Territorial Studies (in Spanish CIETA)</a>
15-17	Ontario, Canada	<a href="#">Canadian Hydrographic Conference (CHC2012)</a>
15-17	Philadelphia PA, USA	<a href="#">Bentley System's Be Together User Conference</a>
16-18 <b>*NEW*</b>	Bogotá, Colombia	<a href="#">International Seminar on Sustainable Territorial Ordering and Development in Latin America</a> Contact: <a href="mailto:epgseminario.internacional@uptc.edu.co">epgseminario.internacional@uptc.edu.co</a>
16-18 <b>*NEW*</b>	Bogotá, Colombia	<a href="#">Radar Workshop-Course</a>
17-18	Denver CO, USA	<a href="#">MAPublisher Training</a>
21-23 <b>*NEW*</b>	Atlanta GA, USA	<a href="#">Spatial Plexus '12: Inspecting "Wicked Problems" with Geospatial Goggles</a> <a href="#">Further information</a>
22-23	Grantville PA, USA	<a href="#">The 2012 PA GIS Conference</a>
22-23	Washington DC, USA	<a href="#">Location Intelligence Conference / Oracle Spatial 2012</a>
22-25	Ciudad de Mexico, Mexico	<a href="#">First International Conference on Government Statistics, Public Security, Justice and Victimization</a>
26-27	Tunja, Colombia	<a href="#">I International and II National Seminar on Geomatics, Environmental and Hydraulics</a>
May 28-Jun. 1	Mendoza, Argentina	<a href="#">XI Argentine Congress on Meteorology</a> Contact: <a href="mailto:blazquez@cima.fcen.uba.ar">blazquez@cima.fcen.uba.ar</a>
29-31	São Paulo, Brazil	<a href="#">MundoGEO#Connect: "Sharing Information for a Better World"</a> Contact: <a href="mailto:connect@mundogeo.com">connect@mundogeo.com</a>
May 30-Jun. 1	Washington DC, USA	<a href="#">UCGIS 2012 Spring Symposium</a> Building GIScience 2.0

### JUNE 2012

3-6	Salvador Bahía, Brazil	<a href="#">33<sup>rd</sup> Inter-American Congress on Sanitary and Environmental Engineering AIDIS</a>
4-5	Bogotá, Colombia	<a href="#">Andean Geomatics 2012</a>
4-6	Rio de Janeiro RJ, Brazil	<a href="#">UN Conference on Sustainable Development (commonly called Earth Summit 2012) or 'Rio+20'</a>
4-7	Las Vegas NV, USA	<a href="#">Hexagon 2012</a>
4-8 <b>*NEW*</b>	Turrialba, Costa Rica	<a href="#">4<sup>th</sup> International Course on Adaptation to climate change: the role of ecosystem services</a>
6-8	Villa de Leyva, Colombia	<a href="#">6<sup>th</sup> Symposium of the Latin American and Caribbean Society of Environmental History - SOLCHA</a>
7-8	Buenos Aires, Argentina	<a href="#">First Workshop on Capture, Processing, Analysis and Dissemination of Geospatial Information</a>
11-15	Savannah GA, USA	<a href="#">URISA Leadership Academy</a>
12 <b>*NEW*</b>	Toronto, Ontario, Canada	<a href="#">Expedition 2012 - The Value of Location - DMTI User Conference</a>
12-13	Buenos Aires, Argentina	<a href="#">First Latin-American Congress on Urban Ecology</a> - Challenges and Development Scenarios for Latin American Cities
12-14	Boulder CO, USA	<a href="#">Call for Participation - Socioeconomic Benefits of Geospatial Information</a> Contact: <a href="mailto:francoise.pearlman@ieee.org">francoise.pearlman@ieee.org</a>
13-15	New Orleans LA, USA	<a href="#">Insights 2012 User Conference</a>
14 <b>*NEW*</b>	Caracas, Venezuela	<a href="#">ESRI National Users Conference (ENVI 2012)</a> Contact: <a href="mailto:conferencia@esriven.com">conferencia@esriven.com</a>
14-15 <b>*NEW*</b>	Santa Cruz, Bolivia	<a href="#">1st Latin American Congress on Surveying and Valuation</a> Contact: <a href="mailto:congreso@tytredsur.org">congreso@tytredsur.org</a>
14-15	Buenos Aires, Argentina	<a href="#">First International Course on Urban Ecology</a>
14-15	Chicago IL, USA	<a href="#">Location Intelligence for Enterprise USA</a>
14-17 <b>*NEW*</b>	Isla de Margarita, Venezuela	<a href="#">FUDcon LATAM Margarita 2012</a>
15-23 <b>*NEW*</b>	Rio de Janeiro, Brazil	<a href="#">Peoples Summit for Social Justice and Environment in defense of the commons (Rio +20)</a>
18-20	Salvador de Bahía, Brazil	<a href="#">Seventh International Conference on "Geographical Analysis, Urban Modeling, Spatial Statistics" GEOG-AN-MOD 12</a>
18-21	Salvador de Bahía, Brazil	<a href="#">The 2012 International Conference on Computational Science and its Applications (ICCSA 2012)</a>

# Global Spatial Data Infrastructure

## Latin America and the Caribbean Newsletter

21-23 <b>*NEW*</b>	Ciudad de México, Mexico	<a href="#">PMTour Mexico 2012</a>
24-27	Chicago IL, USA	<a href="#">4<sup>th</sup> Urban Street Symposium</a>
25-28	Vancouver BC, Canada	<a href="#">CARIS 2012 Conference</a>
25-29	Buenos Aires, Argentina	<a href="#">Sixth Congress on Cartographic Science</a>

### JULY 2012

1-3	Washington DC, USA	<a href="#">COM.Geo 2012</a> The 3rd International Conference on Computing for Geospatial Research and Application
2-3	Lima, Peru	<a href="#">TICAL 2012</a>
7-12	San Diego CA, USA	<a href="#">The Survey Summit</a>
16-20	New Orleans LA, USA	<a href="#">2012 Coordinate Metrology Systems Conference (CMS)</a>
19-24	San Diego CA, USA	<a href="#">Cadastral Summit - Annual ACSM Conference</a>
21-24	San Diego CA, USA	<a href="#">ESRI Education User Conference</a>
21-24	San Diego CA, USA	<a href="#">ESRI Homeland Security Summit</a>
22-24	San Diego CA, USA	<a href="#">ESRI Business Summit</a>
23-27	San Diego CA, USA	<a href="#">ESRI International User Conference 2012</a>
25-28	Porto Alegre, Brazil	<a href="#">XIII International Free Software Forum (FISL)</a>
26-27	San Diego CA, USA	<a href="#">MAPublisher Training</a>

### AUGUST 2012

6-9	Memphis TN, USA	<a href="#">URISA/NENA Addressing Conference</a> . For more information, visits <a href="http://www.nena.org">www.nena.org</a> .
13-15	UN NY, USA	<a href="#">Second Session of the Committee of Experts on Global Geospatial Information Management</a>
14-17	Rio de Janeiro, Brazil	<a href="#">Latin America Geospatial Forum</a> 2 <sup>nd</sup> Annual Latin American Conference and Exhibition on Geospatial Information, Technology and Applications.
16-17	Rio de Janeiro, Brazil	<a href="#">Conference on Geospatial for Defense and Homeland Security: Geo-Intelligence Latin America</a>
23-24	Porto Alegre, Brazil	<a href="#">Seminar "Sharing Environmental Data in Latin America"</a>

### SEPTEMBER 2012

5-8	Pittsburgh, PA, USA	<a href="#">14th ACM International Conference on Ubiquitous Computing - UbiComp 2012</a>
9-11	Albuquerque NM, USA	<a href="#">IMTA (Americas) 2012 Conference and Member Showcase</a>
9-13	Lake Buena Vista FL, USA	<a href="#">National States Geographic Information Council Annual Meeting</a>
11-14	Corvallis OR, USA	<a href="#">ForestSAT 2012: A Conference Promoting Science-based Applications of Remote Sensing and other Spatial Data in Forested Systems</a>
13-14	Philadelphia PA, USA	<a href="#">MAPublisher Training</a>
17-18	Daytona Beach FL, USA	<a href="#">6<sup>th</sup> Annual CFGIS Workshop</a>
18-21	Alta Gracia, Cordoba, Argentina	<a href="#">Argentinean Congress of Remote Sensing 2012</a>
20-22	San Jose, Costa Rica	<a href="#">12th International Congress on Surveying, Cadastre, Geodesy and Geomatics 2012</a>
24-28	Montevideo, Uruguay	<a href="#">XIX ISTRO Conference and 4<sup>th</sup> Meeting of the Uruguayan Society of Soil Science</a> . More: <a href="http://www.congresos-rohr.com/istro2012">http://www.congresos-rohr.com/istro2012</a>
Sep. 30 – Oct. 3	Long Beach CA, USA	<a href="#">Autovation 2012</a>
Sep. 30 – Oct. 4	Portland OR, USA	<a href="#">URISA's Annual Conference for GIS Professionals</a>

### OCTOBER 2012

1	Houston TX, USA	<a href="#">Fall 2012 Meeting: New Positioning Techniques</a>
1-12 <b>*NEW*</b>	Cartago, Turrialba, Costa Rica	<a href="#">First International Course on Using the SWAT Model as a tool for Hydrographic Basin Management</a>
1-3	Bogotá, Colombia	<a href="#">Latin CACS/ISRM Conference</a>
1-4	Portland OR, USA	<a href="#">URISA's Annual Conference for GIS Professionals</a>
1-5	Medellín, Colombia	<a href="#">Latin American Conference on Informatics</a>
3-5	Guadalajara, México	<a href="#">WODES 2012</a>
4-5	Buenos Aires, Argentina	<a href="#">19<sup>th</sup> ESRI Users Latin-American Conference</a>
5-6	La Paz, Bolivia	<a href="#">International Conference on Climate Change, Water and Wetlands</a>
8-12	Guayaquil, Ecuador	<a href="#">Seventh Latin American Conference on Learning Objects and Technologies</a>
15-17	Dallas TX, USA	<a href="#">Field Service Interactive</a>
15-19 <b>*NEW*</b>	Santiago del Estero, Argentina	<a href="#">14<sup>th</sup> Humboldt International Meeting – "The Deglobalization Time"</a>
23-25	Mérida, Venezuela	<a href="#">2nd Venezuelan Congress of Geographic Information Systems GIS (COVESIG)</a>



# Global Spatial Data Infrastructure

## Latin America and the Caribbean Newsletter

24-28 <b>*NEW*</b>	Ibagué, Colombia	<a href="#">6<sup>th</sup> International Course on Tools for Monitoring Carbon Abduction in Land Use Systems</a>
Oct. 8 – Nov. 1 <b>*NEW*</b>	Tampa FL, USA	<a href="#">MAPPS/ASPRS 2012 Specialty Conference</a>

### NOVEMBER 2012

1-4	Vancouver BC, Canada	<a href="#">37<sup>th</sup> Annual Meeting of the Social Science History Association – Historical Geography and Histories of Capitalism</a>
5-7 <b>*NEW*</b>	San Diego CA, USA	<a href="#">SI World 2012 - Situational Intelligence</a>
5-9 <b>*NEW*</b>	Santiago and Temuco, Chile	<a href="#">Symposium "Identities in Production: Production and Identified Movements Between Indigenous Peoples and Ethnic Minorities and Race in Latin America"</a> Further Information: Dr. Luis Fernando Angosto Fernández ( <a href="mailto:luis.angosto-ferrandez@sydney.edu.au">luis.angosto-ferrandez@sydney.edu.au</a> ), and Dr. Sabine Kradolfer ( <a href="mailto:kradolfer.sabine@gmail.com">kradolfer.sabine@gmail.com</a> ).
8-9	Atlanta GA, USA	<a href="#">MAPublisher Training</a>
12-16	Montego Bay, Jamaica	<a href="#">URISA's Caribbean GIS Conference</a>
14-15	Bogotá, Colombia	<a href="#">4G Latin America 2012</a>
14-16	Buenos Aires, Argentina	<a href="#">44th Meeting of the Directing Council PAIGH</a>
16 <b>*NEW*</b>	Santiago de Chile, Chile	<a href="#">Third Colloquium "Geography, Social Movements and Territory" of the 4<sup>th</sup> Seminar on Critical Geography " Gladys Armijo Zuniga, " - "Social Geography and Transformative Critical Pedagogy in Action"</a>
19-23	Cayenne, French Guiana	<a href="#">Symposium SELPER 2012: Earth Observation for a Green Co-developed World</a> Contact: <a href="mailto:contact@selper2012.com">contact@selper2012.com</a>
26-29	Montevideo, Uruguay	<a href="#">8th FIG Regional Conference</a>
Nov. 4 - Dec. 4	Buenos Aires, Argentina	<a href="#">FIG Commission 7<sup>th</sup> Annual Meeting</a>
Nov. 29 - Dec. 1 <b>*NEW*</b>	Madrid, Spain	<a href="#">15<sup>th</sup> Meeting of Spanish Latin Americanists. International Conference "Latin America: The Autonomy of a Region"</a>

### DECEMBER 2012

5 <b>*NEW*</b>	Buenos Aires, Argentina	<a href="#">FIG Commission 7 International Symposium</a>
27-29	Las Vegas NV, USA	<a href="#">IMTA (Americas) 2012 Strategic Planning Session</a>

## YEAR 2013

[Year 2013](#)
[January](#)
[February](#)
[March](#)
[April](#)
[May](#)
[June](#)
[July](#)
[August](#)
[September](#)
[October](#)
[November](#)
[December](#)

### FEBRUARY 2013

11-13 <b>*NEW*</b>	Denver CO, USA	<a href="#">International LIDAR Mapping Forum</a>
-----------------------	----------------	---

### APRIL 2013

1-5	Havana, Cuba	<a href="#">V Cuban Convention on Earth Sciences - Geosciences 2013</a>
-----	--------------	---

### JULY 2013

To be determined <b>*NEW*</b>	Lima, Perú	<a href="#">14<sup>th</sup> Latin American Geographers Meeting (EGAL), Lima 2013, " Latin American Regional Knowledge Gathering "</a>
----------------------------------	------------	---

[\(Back to top\)](#)



## Global Spatial Data Infrastructure

Latin America and the Caribbean Newsletter

Please mention SDI-LAC as source of information in any correspondence you may have on items on this issue

To subscribe to SDI-LAC, please do so online at:  
<http://www.gsdi.org/newslist/gsdisubscribe.asp>  
Nancy Aguirre, PAIGH, Editor [cnaguirre@ipgh.org](mailto:cnaguirre@ipgh.org)  
Global Spatial Data Infrastructure Association,  
<http://www.gsdi.org>

### DISCLAIMER:

GSDI, PAIGH and the Editor will not be held liable for any errors, mistakes, misprints or incorrect information. Copyright © 2012. All rights reserved.